



DISCOVER KENYA



DESTINATION MANUAL

CONTENTS

THE AFRICA HOUSE EXPERIENCE.....	PAGE 3-6
KENYA OVERVIEW.....	PAGE 7-8
MAIN ATTRACTIONS & ACCOMMODATION.....	PAGE 9-119
NAIROBI.....	PAGE 9-20
AMBOSELI & CHYULU HILLS.....	PAGE 21-26
LAIKIPIA CONSERVANCIES.....	PAGE 27-62
OL PEJETA & SOLIO	PAGE 29-33
LEWA WILDLIFE CONSERVANCY.....	PAGE 34-41
BORANA	PAGE 41-47
LOISABA	PAGE 48-55
SOSIAN & MUGIE	PAGE 56-61
SAMBURU, BUFFALO SPRINGS & SHABA NATIONAL RESERVES.....	PAGE 62-69
MAASAI MARA.....	PAGE 70-114
MERU NATIONAL PARK.....	PAGE 115-118
OTHER PARKS & ATTRACTIONS.....	PAGE 119-121
MAGICAL EXTENSIONS & EXTRAS.....	PAGE 122
KENYA INFORMATION PACK.....	PAGE 123-126
WHAT TO PACK.....	PAGE 127-128
TRAVEL TIPS & GENERAL INFORMATION.....	PAGE 128
GETTING AROUND.....	PAGE 129
TIPPING.....	PAGE 130
RESPONSIBLE TOURISM.....	PAGE 131
TESTIMONIALS.....	PAGE 132
TERMS & CONDITIONS.....	PAGE 133
PAYMENT POLICY.....	PAGE 133
CANCELLATION POLICY.....	PAGE 133
CONTACT INFORMATION.....	PAGE 133

THE AFRICA HOUSE EXPERIENCE

THERE'S NO EXPERIENCE ON EARTH QUITE LIKE A SAFARI



Image courtesy of &BEYOND

Big cats, rhinos, elephants, starry nights, dramatic open skies, sun sets across golden savannahs...No matter how you've imagined Africa, nothing can prepare you for the experience of seeing wildlife in its natural setting.

But discovering East Africa is about even more than that. The Africa House experience is lovingly crafted with quality and authenticity in every detail to bring the magic of East Africa to your dream journey. Prepare yourself for the surreal pleasure of eating an exquisite meal in a remote and distant wilderness, sleeping under the blanket of a star-studded sky, discovering fascinating insights into tribal life and culture and much more. Driven by the passion of Kenyan safari expert David Sugden and his wife Karen, their personal touch will unlock the real Africa for you.

We take you to the region's best national parks and game reserves and stunningly stylish accommodation with impeccable service. At Africa House we understand the ingredients needed for a truly luxurious, tailor-made safari for families, groups or individuals. Driven by the passion of Kenyan safari expert David Sugden, our personal touch, local knowledge and commitment to the highest quality create something special – an African adventure that's authentic and immersive, to give you the time of your life.

For a small flavor of what to expect, watch our film:

youtube.com/watch?v=No8UiiCb76E

"I never knew of a morning in Africa when I woke up that I was not happy."

Ernest Hemingway

YOUR SAFARI, YOUR WAY

When designing your itinerary, first we listen to your needs and aspirations. Then we apply our years of experience, local expertise and flair to create a genuinely bespoke travel experience - your Safari, your way.

Everyone's ideal safari is different. Whether it's an action-packed adventure, a gentler paced vacation, a family or group trip or you're travelling alone... We'll take into account your budget, preferred accommodation type and any special requirements you might have to come up with a journey that's tailor-made for you. So, whether you're seeking a romantic honeymoon, a child-friendly family trip or an all-out wilderness adventure, we know just the right places to make your time in Africa unforgettable.

For more information on our guides [click here](#)

HOW TO USE THIS MANUAL

This manual has been developed to showcase our favourite destinations in Kenya. Information on these destinations and our preferred camps and lodges can be found within as a quick reference for you to get a better flavor of each location. While this manual is extensive it isn't exhaustive and we are constantly exploring new and different lodges, camps, hotels and destinations for our guests. If you have a query about a destination or activity that isn't addressed in the manual, do not hesitate to contact us, we can happily help.

GET IN TOUCH

Karen Sugden - Director

Tel: +254 (0)722 411 206

Karen@afriahousesafaris.com

David Sugden - Director

Tel: +254 (0)722 512 588

David@afriahousesafaris.com

Postal address:

Africa House
P.O. Box 1751
Nairobi
00502

*"Nothing we have ever done
compares to our time with Africa House, in Africa"*

Jane McMullin, Africa House Guest

LUXURY ACCOMMODATION

At Africa House, we carefully hand pick accommodation based on quality, location, character and our guests' needs. It's high-end travel at its finest – great food, attentive service and pure luxury in the wild. Wherever your Africa House itinerary takes you, style and comfort will follow.



LODGES

Our handpicked lodges are stunningly designed with unique architecture and interiors set in iconic locations offering sensational views with prime game viewing opportunities, privacy, sumptuous luxury and the best in African hospitality. Many are part of wider community and conservation projects, meaning your stay will contribute to a valuable local cause.

TENTED CAMPS

For an intimate encounter with the African bush, tented accommodation offers an even more immersive experience. This is no ordinary camping trip – you're treated to luxurious beds, amazing service and delicious meals. Permanent and seasonal tented camps are an excellent choice for access to some of East Africa's most sensational locations.

HOTELS & GUEST HOUSES

Whether it's as a stop-off at the beginning and end of your safari itinerary, or as a more integral part of your African journey, your itinerary is likely to include at least some time at a hotel. We've selected the very best that Kenya has on offer, from conveniently located city spots to charming heritage guest houses near wildlife areas.



OUR DESTINATIONS



Kenya



Tanzania



Uganda



Rwanda



Ethiopia

From the world-famous wildlife spectacle of the Great Migration in Kenya and Tanzania, to sitting beside the great Mountain Gorillas of Rwanda, we have the ultimate destinations for a captivating and memorable wilderness adventure.

With high concentrations of wildlife, year-round access, and world-class luxury accommodation Tanzania and Kenya offer breathtaking beauty in abundance and reliably impressive game viewing - a classic East African safari.

If you wish to explore even more of the region's splendor from Zanzibar, Uganda, to Rwanda and Ethiopia, our specialist travel experiences can be designed as an extension to your main itinerary or as a stand-alone safari.

Optional extras can add a special dimension to your trip and allow you discover even more of Africa's diverse curiosities, encounters and spectacles, see page 124 for a sample of the extensions and specialist activities we have to offer, to complement your main safari.



KENYA



BEST TIME TO GO
JAN-MAR, JUN-OCT, DEC

CAPITAL
NAIROBI (NBO)

TIME ZONE
GMT + 3

DAYLIGHT
06:30 – 18:45

CURRENCY
KENYAN SHILLING

FLIGHTS TO KENYA

From USA

New York – Nairobi (direct): 14 hours

East Coast – Nairobi (via London, Amsterdam, Zurich, Frankfurt, Paris, Rome): 18 hours

West Coast – Nairobi (via London, Amsterdam, Paris or Istanbul): 23 hours

From Europe

Direct flights from London, Amsterdam, Paris and Rome: from 9 hours

OVERVIEW

Widely regarded as the home of safari, Kenya has everything you'd expect for a classic African adventure. Legendary game parks and conservancies including the Masai Mara, Laikipia and Amboseli reveal quintessential sweeping acacia-studded savannah landscapes. They are home to lion, cheetah, elephant, rhino, giraffe and a bewildering array of other wildlife. The north of the country offers an alternative view of Kenya, wild and remote, with private wildlife-filled conservancies and fascinating tribes.

Kenya's glorious Indian Ocean coast presents yet another facet. Stunning beach destinations, including Lamu and Diani, invite you to escape to idyllic resorts complete with white sands, palm trees and warm, turquoise, crystal-clear ocean.

To top it off, Kenya has some of the finest high-end accommodation in the world, from plush hotels to gorgeous luxury eco-lodges. Enjoy evening game drives aboard comfortable 4x4 vehicles, bush walks and nights spent under a blanket of stars. An opportunity to discover local conservation efforts, such as an elephant research center or a tree-planting community project.

Kenya is an enormous country with an endless number of places to visit and explore. This manual features most of the highlights Kenya has to offer.

The conservancies and parks listed have been chosen as they are the best locations for game viewing and have some of the best accommodation options in the country. However, there are many more interesting places to visit and the 'Other Parks & Attractions' section in this manual includes details of many more. If you are interested in a specific destination or accommodation not listed, we can certainly provide more information and create an itinerary with these included.

APPROX. TRAVELLING TIMES BY AIR (MINS)

NAIROBI

40	AMBOSELI					
60	90	OL PEJETA				
60	90	N/A	SOLIO			
60	90	N/A	N/A	LEWA		
90	90	N/A	N/A	N/A	LOISABA	
90	90	N/A	N/A	N/A	N/A	SAMBURU
60	60	90	90	90	90	MASAI MARA

DISTANCES (KM)

NAIROBI

230	AMBOSELI					
225	420	OL PEJETA				
218	400	40	SOLIO			
280	470	80	110	LEWA		
280	500	130	180	200	LOISABA	
330	520	130	160	60	250	SAMBURU
250	480	450	420	510	440	MASAI MARA

APPROX. TRAVELLING TIMES BY ROAD (HRS)

NAIROBI

5	AMBOSELI					
4.5	8	OL PEJETA				
4.5	8	1.5	SOLIO			
5.5	9	2	2.5	LEWA		
6	10	4	4	5	LOISABA	
6	9.5	2.5	3.5	1.5	5.5	SAMBURU
6	10	10	8.5	10	9	MASAI MARA

MAIN ATTRACTIONS



About 8% of Kenya's land mass is protected for wildlife conservation. Forests, wetlands, savannah, marine, arid and semi-arid protected areas comprise of 23 terrestrial National Parks, 28 terrestrial National Reserves, 4 marine National Parks, 6 marine National Reserves and 4 national sanctuaries.

NAIROBI

Founded in 1899, Kenya's capital was established by rail road workers, building a railway from Mombasa on the coast to Kisumu on the edge of Lake Victoria, in Western Kenya. Once a swamp, Nairobi gets its name from the Maasai phrase *Enkare Nyirobi*, which translates to *"the place of cool waters"*.

Home to over 4 million inhabitants, Nairobi is a cosmopolitan city at the heart of East Africa. A booming economy in the 2000's led to many Fortune 500 companies establishing offices in the city. In particular, the financial technology industry has flourished with Nairobi being the birthplace of mobile payments, through M-PESA.

Primarily the starting and finishing point for a safari there are a number of interesting excursions within the Nairobi area including The Karen Blixen Museum, Giraffe Centre, Daphne Sheldrick's Elephant Orphanage, Matbronze, Kazuri Beads and Nairobi National Park.

KAREN BLIXEN MUSEUM

The former African home of Danish author Karen Blixen, famous for her book *Out of Africa* which chronicles life at the estate. Open every day from 9.30-6pm, visitors are able to take guided tours of the house which features rooms designed in both the original decor and with props from the 1985 film, *Out of Africa*. Once a coffee farm, the grounds features original equipment from the farm as well as a gift shop.

GIRAFFE CENTRE

Founded in 1979, the Giraffe Centre was established for the conservation of giraffes, in particular the Rothschild Giraffe, a species found only in the grasslands of East Africa. A beacon of success in the conservation world, the center through The Africa Fund for Endangered Wildlife, has helped raise the number of Rothschild giraffe from 130 to over 300 and counting. At the center, visitors can get up close with the resident giraffe, feed them by hand and learn more about the species and conservation efforts to protect the species.

DAPHNE SHELDRIK'S ELEPHANT ORPHANAGE

Part of the David Sheldrick Wildlife trust, this orphanage on the outskirts of Nairobi and the Nairobi National Park is home to orphaned, baby elephants. These abandoned tiny tuskers are brought to the orphanage to be cared for, reared and eventually re-introduced into the wild. Every day at 11 am, guests are able to visit the orphanage to see the elephants play, learn about how they came to be at the orphanage and even 'adopt' an elephant, to contribute towards its successful rehabilitation into the wild.

MATBRONZE

Conveniently located between Daphne Sheldrick's Elephant Orphanage and the Giraffe Centre (see above), the Matbronze gallery and café has one of the largest displays of wildlife bronzes in Africa. Over six hundred pieces, ranging from cuff-links to life size crocodiles. From cute cub footprints to large lion track trays. For those looking for unique and beautiful African souvenirs, Matbronze is a must visit.

KAZURI BEADS

Kazuri, which means "small and beautiful" in Swahili, began in 1975 as a tiny workshop experimenting in hand crafted ceramic beads. It started with two single motherhood women in desperate need of employment, but has now grown to a workforce of over 340 skilled in the crafting of ceramic beads, strung into beautiful and artistic jewelry. Guests can enjoy a tour of the factory, meet some of the amazing people working there and understand how this business is helping change the lives of its employees. A little shop at the end of the tour sells unique items that make for great gifts or keepsakes.

NAIROBI NATIONAL PARK

Set on wide open grass plains against the backdrop of the city, the park is an easy 10 km (6 mile) drive from the CBD. The pristine savannah hosts a large stock of migratory game between the Mombasa-Nairobi railway line and the suburb of Langata. Established in 1946, Nairobi National Park is the only national park in the world to be found within the precincts of a capital city. The 114 km² (44 mile²) park is open on its south east perimeter which allows a corridor for the natural migration of game which takes place with the seasonal rains.

Of the "big five" only elephant are absent but sightings of the rest of the big five are almost guaranteed. Lion and hyena are commonly sighted within the park and with a bit of patience and a lot of luck you could spot the park's resident rhino, cheetah and leopard. Other regularly spotted species include impala, gazelle, warthog, zebra, giraffe, wildebeest, eland, waterbuck, ostrich and buffalo. With approximately 400 migratory and endemic bird species, the park has more species than the whole of the UK.

Why visit? Nairobi National park is the only national park in the world to be found within the precincts of a capital city. With some luck, the park offers the chance to snap lion or even rhino against the back drop of a modern metropolis.

PRICE	SIZE	Recommended No. Nights
Adult USD \$43 per day Child USD \$22 per day	28,900 acres	1 day / afternoon

Nairobi is a vibrant, sprawling, modern metropolis and has developed as the commercial hub of East Africa. For those interested in seeing a more urban side to the 'City in the sun', tours can be arranged. However, it must be noted that high levels of traffic in the city can be a problem and venturing into the CDB should only be done outside of rush hour.

NAIROBI ACCOMMODATION

GIRAFFE MANOR



Overview

This exclusive, boutique hotel is set on 12 acres of private land within 140 acres of indigenous forest in the Langata suburb of Nairobi. Built in 1932, the iconic building was modelled on a Scottish hunting lodge. With its stately façade, elegant interior, verdant green gardens, sunny terraces and delightful courtyards, guests often remark that it's like walking into the film *Out of Africa*.

The most fascinating thing about Giraffe Manor is no doubt its herd of resident Rothschild's giraffe who visit morning and evening. Sometimes they poke their long necks into the windows in the hope of a treat, before retreating to their forest sanctuary. Apart from feeding giraffes by hand, guests can also enjoy a game of Boules on the lawn and make use of the Manor's complimentary hotel vehicle to explore the wider Karen area.

Please note that The Giraffe Manor is extremely popular and often gets booked up years in advance. To avoid disappointment, we recommend booking early to secure the property. Contact us with client dates and we will try our utmost to secure a booking for your guests. Also note that the new Garden Manor wing at the Manor can only be booked if guests stay at another of the link properties (Sasaab, Solio Lodge or Sala's Camp). The Main Manor is available for guests who are not staying at one of their other properties.

Accommodation

Made up of 12 beautiful and spacious rooms, all with en-suite bathrooms, the hotel can accommodate up to 29 people comfortably. Family rooms and suites are available for groups and there is the option of doubles or twin rooms. Rooms can also accommodate a third bed if required, with advance notice.

Food & Drink

Meals and most drinks are included. Champagne and luxury wines & spirits are not included.

Payments

For any additional activities or services not included in the room rate, Visa and Mastercard payments are accepted with a 5% surcharge. Forex and ATM services are available at a nearby mall.

Getting there

The manor is 30 km, approximately 45-minute, drive from Jomo Kenyatta International Airport. For domestic and chartered flights, Wilson airport is 14 km, approximately 35-minute drive.

HEMINGWAYS



Overview

Located in the peaceful, leafy suburb of Karen, this five-star, boutique hotel epitomizes luxury and personal service. Beautiful in its symmetry and flooded with natural light, this plantation-style property is airy and spacious. Each of the 80m² suites has a private balcony overlooking the iconic silhouette of the Ngong Hills, a magical view which can also be enjoyed over sundowners at the bar.

Your dedicated butler will know whether you prefer Earl Grey or Assam with your scones, like reading the Washington Post or the Telegraph and will remember which trousers you like pressed flat and which ones need a central crease. So, while you are indulging in the spa, relaxing beside the pool or meandering through the gardens, back in your suite your butler will have dimmed the lights, adjusted your personalized pillows and set out your nightcap.

Accommodation

With 45 en-suite rooms, this hotel can accommodate over 120 guests. Suites and rooms with connecting doors are ideal for families while most rooms can have a third bed added if required. Double or twin rooms are also available.

Food & Drink

Bed and breakfast are included in the room rate however additional meals can be purchased if required. Drinks are not included.

Payments

For any additional activities or services not included in the room rate, Visa and Mastercard payments are accepted. Forex services are available in reception and ATM services can be found at a nearby mall.

Getting there

Hemingways is 32 km, approximately 45-minute, drive from Jomo Kenyatta International Airport. For domestic and chartered flights, Wilson airport is 16 km, approximately 35-minute drive.

THE RESIDENCES



Overview

Tucked away in a serene, forested area overlooking the second hole of the Karen Country Club golf course, The Residences at Karen embody comfort, luxury and serenity. Guests looking for relaxation can enjoy the peace and natural beauty of the surroundings while those looking for activities can access the facilities of the country club.

The word "Residence" only hints at the level of luxury and personalized service which will greet you at the Residences at Karen, it is truly a home away from home. The team of professional staff is eager to serve you and anticipate your every need.

Accommodation

The Residence has six 2-bedroom cottages and 12 apartment suites with a total capacity of 48. The 2-bedroom cottages are ideal for families and groups and additional beds can be added to rooms with advance notice. The option of double or twin rooms is also available when booking. All rooms are en-suite.

Food & Drink

Both bed and breakfast and half board (bed, breakfast & dinner) options are available. Additional meals can be purchased while drinks are also at additional cost.

Payments

For any additional activities or services not included in the room rate, Visa and Mastercard payments are accepted. Forex and ATM services are available at a nearby mall.

Getting there

The Residences is 31 km, approximately 45-minute, drive from Jomo Kenyatta International Airport. For domestic and chartered flights, Wilson airport is 19 km, approximately 35-minute drive.

HOUSE OF WAINE



Overview

Set on 2.5 acres of well-manicured lawns, House of Waine is a luxury, boutique hotel that blends the elegance of gracious living with the spirit of modern Africa in an exclusive and serene setting.

House of Waine aims to provide guests with an experience that exceeds all their expectations of city hotels. Delightful cuisine and personalised, friendly & excellent service are the hallmarks of this excellent hotel. For those looking for interesting souvenirs to take home, the House of Waine Treasures is a shop full of interesting items for guests and visitors to purchase.

Accommodation

Made up of ten regular en-suite rooms, one cottage and a honeymoon suite, House of Waine has a capacity of up to 25 guests. The cottage is ideal for families and groups however two rooms with connecting doors are also available. Additional beds can be added to rooms and there is the option of double or twin rooms when booking.

Food & Drink

Bed and breakfast are included in the room rate. Additional meals and drinks can be purchased at extra cost.

Payments

For any additional activities or services not included in the room rate, Visa and Mastercard payments are accepted. Forex and ATM services are available at a nearby mall.

Getting there

House of Waine is 31 km, approximately 45-minute, drive from Jomo Kenyatta International Airport. For domestic and chartered flights, Wilson airport is 14 km, approximately 30-minute drive.

KAREN BLIXEN COFFEE GARDEN



Overview

Once home to Karen Blixen, made famous by the film *Out of Africa*, Karen Blixen Coffee Garden is a beautiful and peaceful location, steeped in history.

Set on 5 ½ acres of land with large, hundred-year-old trees, a beautiful garden with different varieties of blooming flowers and a large population of birds, guests get a sense of reliving history

Accommodation

Accommodation consists of 15 elegantly designed cottages all with a total capacity of up to 30 guests. The cottage is ideal for families and groups however two rooms with connecting doors are also available. All rooms are en-suite. Additional beds can be added to rooms with advance notice and there is the option of double or twin rooms when booking.

Food & Drink

Bed and breakfast are included in the room rate however additional meals can be purchased if required. Drinks are not included.

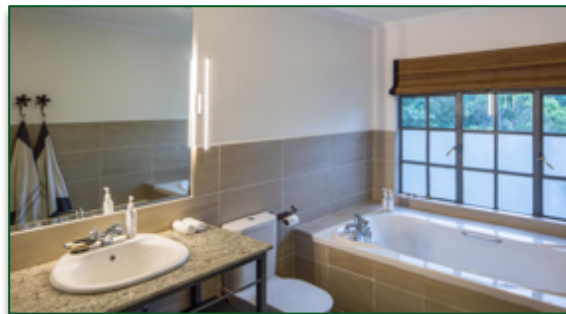
Payments

For any additional activities or services not included in the room rate, Visa and Mastercard payments are accepted. Forex and ATM services are available at a nearby mall.

Getting there

The hotel is 32 km, approximately 45-minute, drive from Jomo Kenyatta International Airport. For domestic and chartered flights, Wilson airport is 16 km, approximately 35-minute drive.

148



Overview

Located in the peaceful suburb of Langata, this boutique hotel is an ideal location to rest and relax. Warthog, parrots, peacocks & monkeys roam freely in the garden and lion & hyena can often be heard, from a safe distance, in the nearby Nairobi National Park.

Once a private home, this converted house gives guest the home-away-from home feeling. Delicious food & wine, beautifully appointed rooms and first-class service are the hallmarks of this hotel.

Accommodation

Made up of eight en-suite rooms 148 can host up to 22 guests. The family room is perfect for families or groups and additional beds can be added to rooms with advance notice. There is also the option of double or twin rooms when booking.

Food & Drink

Bed and breakfast are included in the room rate however additional meals can be purchased if required. A light meal can also be arranged for guests that arrive late at night. Drinks are not included.

Payments

For any additional activities or services not included in the room rate, Visa and Mastercard payments are accepted with a 3.5% surcharge. Forex and ATM services are available at a nearby mall.

Getting there

148 is an easy 30 km, approximately 45-minute, drive from Jomo Kenyatta International Airport. For domestic and chartered flights, Wilson airport is 15 km, approximately 35-minute drive.

OLE SERENI HOTEL



Overview

Conveniently situated just 12 km from Jomo Kenyatta International Airport, Ole Sereni makes a good stop over for the beginning or end of a safari. With panoramic views over the Nairobi National Park, it is easy to forget you are in one of the biggest cities in Africa.

Renowned for its food, guests can expect high quality meals. Bed and breakfast come included with room rate, however drinks are not included. If your dates coincide, on the first Saturday of every month, guests can enjoy the regular bush barbecue – an afternoon game drive followed by dinner.

Accommodation

The hotel can accommodate 300 guests in 134 en-suite rooms. Rooms with connecting doors can be booked for families and groups while additional beds can be added to rooms with advance notice. The option of double or twin rooms is available while booking and guests can choose from standard rooms, deluxe rooms, club rooms or suites with varying levels of size and luxury.

Food & Drink

Bed and breakfast are included in the room rate however additional meals can be purchased if required. Drinks are not included.

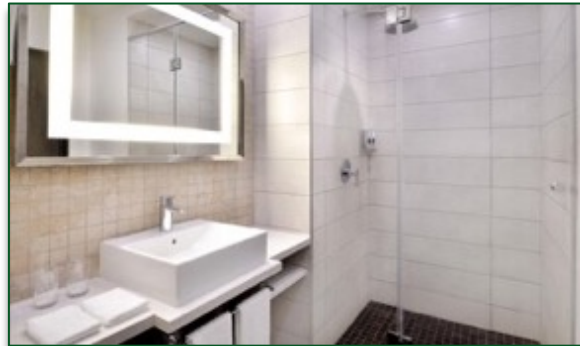
Payments

For any additional activities or services not included in the room rate, Visa and Mastercard payments are accepted with a 5% surcharge. Forex and ATM services are available nearby, while small amounts of Forex can be exchanged at reception.

Getting there

12 km from Jomo Kenyatta International Airport, for international flights, the journey can be made in 20 minutes by car if traffic is favourable. For domestic and chartered flights, the hotel is 10 km from Wilson Airport which, depending in the time and traffic, can take 15 – 30 minutes by car.

FOUR POINTS BY SHERATON – NAIROBI AIRPORT



Overview

Situated 5 km from Jomo Kenyatta International Airport, Four Points by Sheraton is perfect for guests with late arrivals or early morning departures.

Apart from excellent restaurants and cuisine, the hotel boasts a modern and stylish design of international standard. With an outdoor pool, gym and spa, travelers can shake off the jet lag before they embark on their African adventure.

Accommodation

With 172 en-suite rooms the hotel can accommodate over 340 guests. Rooms with connecting doors can be booked for families and groups while additional beds can be added to rooms with advance notice. The option of double or twin rooms is available while booking and guests can choose from a variety of room types with varying levels of size and luxury.

Food & Drink

Bed and breakfast are included in the room rate however additional meals can be purchased if required. Tea, coffee and breakfast juice is included with breakfast however other drinks must be purchased at additional cost.

Payments

For any additional activities or services not included in the room rate, Visa and Mastercard payments are accepted. Forex and ATM services are available at the airport on arrival and small amounts of Forex can be exchanged at reception.

Getting there

On arrival at JKIA, hotel vehicles will collect and drop guests at the hotel, a total distance of 5 km which usually takes 10 minutes. Wilson airport, the hub for domestic and chartered flights, is a 20 km drive which, depending on traffic can take 20-40 minutes.

NAIROBI SERENA



Overview

Situated on the edge of Nairobi's central park, this five-star hotel is a celebration of sophistication and a rich fusion of design influences from Ethiopia, the Maghreb, West Africa and East Africa. Established in 1975, the hotel stands on land that once carried the National Museum of Kenya, in 1922. Indeed, the hotel has witnessed and even been involved in many moments in Kenya's history. Set amidst lush gardens with spectacular views of Nairobi's skyline and Central Park, the hotel does not sacrifice on quality, comfort and elegance.

Accommodation

With 199 en-suite rooms the hotel can accommodate up to 400 guests. Rooms with connecting doors can be booked for families and groups while additional beds can be added to rooms with advance notice. The option of double or twin rooms is available while booking and guests can choose from a variety of room types with varying levels of size and luxury.

Food & Drink

Bed and breakfast are included in the room rate however additional meals can be purchased if required. Tea, coffee and breakfast juice is included with breakfast however other drinks must be purchased at additional cost.

Payments

For any additional activities or services not included in the room rate, Visa and Mastercard payments are accepted. Forex and ATM services are available at the airport on arrival.

Getting there

20 km from Jomo Kenyatta International Airport, depending on traffic, the journey should take 30 minutes by car. Similarly, to reach Wilson airport for domestic and chartered flights, the 6.5 km journey should take 20 minutes but could take an hour depending on traffic.

NAIROBI ACCOMMODATION INFO & AMENITIES

Notes:

1. All hotel rooms have; en-suite bathrooms, baths, flush toilets, provide shampoo & conditioner, 24 hour electricity & power points in rooms, 4G phone signal for local networks and Wi-Fi throughout the hotel.
2. All hotels can cater for specific dietary requirements if notified in advance.
3. All hotels with capability to host guests with disabilities require advance notice to secure appropriate rooms.

Key:

✓	Amenity available at no additional cost
✓\$	Amenity available at additional cost
✗	Amenity not available

	Giraffe Manor	Hemingways	The Residences	House of Waine	Karen Blixen Coffee Garden	148	Ole Sereni	Fourpoints by Sheraton	Serena Hotel
Wi-fi	✓	✓	✓	✓	✓	✓	✓	✓	✓
Safe in room	✓	✓	✓	✓	✓	✓	✓	✓	✓
Hair dryers	✓	✓	✓	✓	✓	✓	✓	✓	✓
Cots available	✓	✓	✓	✓	✓	✓	✓	✓	✓
Family rooms	✓	✓	✓	✓	✓	✗	✗	✗	✗
Nanny service	✗	✓\$	✓\$	✓\$	✓\$	✗	✗	✗	✓\$
Room mini bar	✗	✓	✓	✓	✗	✓	✓	✓	✓
Room service	✗	✓\$	✓\$	✓\$	✓\$	✓\$	✓\$	✓\$	✓\$
Tea & coffee maker in room	✓	✓	✓	✗	✓	✓	✓	✓	✓
Mosquito net	✓	✓	✓	✗	✓	✗	✗	✗	✗
Laundry	✓	✓\$	✓\$	✓\$	✓\$	✓\$	✓\$	✓\$	✓\$
Swimming pool	✗	✓	✓	✓	✓	✗	✓	✓	✓
Spa	✓\$	✓\$	✓\$	✗	✓\$	✓\$	✓\$	✓\$	✓\$
Gym	✗	✓	✓\$	✗	✓	✗	✓	✓	✓
Wheelchair access	✓	✓	✓	✓	✓	✗	✓	✓	✓
Air conditioning	✗	✓	✗	✓	✗	✗	✗	✗	✗
Late check-out possible	✗	✓\$	✓\$	✓	✓\$	✓\$	✓\$	✓\$	✓\$

AMBOSELI NATIONAL PARK

At the foot of Mount Kilimanjaro, Africa's highest peak, lies Amboseli National Park. Located 240 kms (145 miles) east of Nairobi, it is one of the best places in Africa to view large herds of elephants up close with incredible views of the snow-capped peak of Mount Kilimanjaro in the backdrop. Lion, elephant, leopard, wild dogs, cheetah, buffalo and plains game make the area a photographer's paradise, with the landscape ranging from the dried-up bed of Lake Amboseli, wetlands with sulphur springs, the savannah and woodlands. Visitors can also experience the authentic culture of the local Maasai community who live around the park.

Why visit? Amboseli is home to some of the biggest Tuskers (Elephant) in the world. The natural habitat and decades of protection from poachers has helped giant elephants with enormous tusks flourish in the area. Dramatic views of Kilimanjaro are another highlight and make for a beautiful back drop for photos of animals.

PRICE

Adult USD \$60 per day

Child USD \$35 per day

SIZE

96,000 acres

Recommended No. Nights

3

AMBOSELI ACCOMMODATION

TAWI LODGE



Overview

This beautiful eco-lodge makes no compromises when it comes to luxury. Consisting of 13 en-suite cottages all situated to face Mt. Kilimanjaro, the natural design and well thought out layout of the camp allows guests to fully immerse themselves in nature. A waterhole, visible from the bar and dining room is very popular with the elephant, zebra, impala and kudu. So, you can spend the evenings watching the animals and sunset from the sundowner couch. Then after dinner, relax by the fire as you listen to the magical sounds of the African bush.

For a fee, guests can arrange scenic flight of the local area and even incorporate it into the transfer from Nairobi. For those who prefer to be at ground level, guided walks of the private, 6,000-acre Tawi Conservancy are a great way to see animals and explore the area. Complimentary activities include boules, birdwatching and in the evening, the opportunity to watch traditional Maasai dancing.

Accommodation

With 13 en-suite cottages the hotel can accommodate up to 30 guests. Families and groups can book two cottages in close proximity or additional beds can be added to rooms for children under 12. The option of double or twin rooms is available at booking.

Each cottage has its own wooden-deck veranda and fabulous view of the highest mountain in Africa, even from the comfort of your bed or your bathtub.

Children

Children of all ages are welcome and plans are currently underway to develop a family cottage for guests with children. Cots and baby chairs are available for infants but must be requested in advance. Babysitting services are not available and children should be accompanied at all times around the camp.

Food & Drink

Meals and most drinks are included in the room rate. Champagne and luxury wines & spirits are not included.

Payments

For any additional activities or services not included in the room rate, Visa and Mastercard payments are accepted. Local currency and USD cash is also accepted and is required for any tips.

Power & Communications

24 / 7 power is provided by solar and back-up generator.

Rooms have power points to charge personal electronics.

Wi-fi is available throughout the lodge.

There is patchy phone signal for local networks.

Getting there

Tawi Lodge is a 40-minute flight from Nairobi airport. Scheduled flights leave Wilson airport at 7.30 and 14.00 every day. Flights land at Amboseli airstrip which is a 23 km, approximately 1-hour, game drive to the Lodge. For those wishing to charter a fixed wing or helicopter flight, aircraft can land at the hotel's private airstrip at coordinates S2° 43.786' E37° 25.621'. By car from Nairobi, the journey is 235 km, approximately 5.5 hours.

TORTILIS CAMP





Overview

The camp is named after the Acacia Tortilis Trees which surround the location. The 16-tent luxury safari camp is located in the 120 km² Kitirua Conservancy which is exclusive to camp guests. The location boasts exceptional views of Mt. Kilimanjaro and is an excellent base to explore the Amboseli ecosystem.

Activities on offer include; day and night game drives, walking safaris, birdwatching and cultural excursions to see how traditional Maasai live. The camp's main areas which consist of a pool, sundowner fire pit and lounge, all have exceptional views of Africa's highest mountain – Mt. Kilimanjaro.

Accommodation

The camp is made up of 16 well-spaced, thatch roof, en-suite cottages. Families and small groups can book a family tent or private house which are close together but have enough separation for privacy if required. The option of double or twin rooms is available at booking.

Set amongst acacia trees, the cottages all face Kilimanjaro. A paved terrace outside each cottage is the perfect location for a morning coffee or afternoon relaxation. Rooms can be configured as doubles (king beds) or twins.

Children

Children of all ages are welcome but there are no special activities or services in place for children. The camp pool and choice of family room of private house make the camp ideal for families.

Food & Drink

Meals and most drinks are included in the room rate. Champagne and luxury wines & spirits are not included.

Payments

For any additional activities or services not included in the room rate, Visa and Mastercard payments are accepted. Local currency, USD, GBP and EURO cash is also accepted and is required for any tips.

Power & Communications

The camp has a back-up generator and all rooms have charging facilities

Wi-fi is available throughout the lodge.

There is good phone signal for local networks.

Getting there

The camp's closest airstrip is Amboseli airstrip which is a 40-minute flight from Nairobi airport. Scheduled flights leave Wilson airport at 7.30 and 14.00 every day. From Amboseli airstrip to camp it is a 13 km, approximately 45-minute, game drive. By road from Nairobi, the journey is 250 km, approximately 4.5 hours. Tortilis also has its own private airstrip, next to the camp, for chartered flights.

CHYULU HILLS

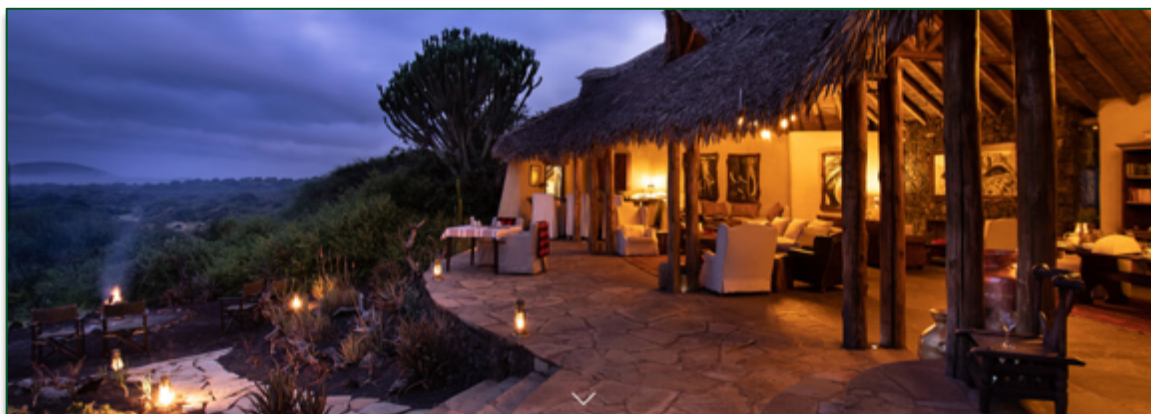
One of the youngest ranges in the world, the Chyulu Hills, commonly referred to as the Chyulus, roll across eastern Kenya, overlooking vast grassy plains and topped by rainforest and lush meadows. With over 180,000 acres under wildlife management, the Chyulus are one of the great wilderness areas of Africa.

Why visit? The beautiful hills and volcanic scenery make The Chyulus, quite unlike anywhere else in Kenya. The volcanic mountains offer a fascinating mix of volcanic ash cones and barren lava flows. In addition, guests can enjoy excellent bird watching and caving and trekking.

PRICE	SIZE	Recommended No. Nights
Adult USD \$25 per day Child USD \$15 per day	183,000 acres	3

CHYULU HILLS ACCOMMODATION

OL DONYO LODGE



Overview

Wedge between Kenya's Tsavo East and Amboseli National Parks, in the heart of the Chyulu Hills, this is a place of timeless, wild beauty presided over by one of Africa's greatest icon — Mount Kilimanjaro. The hotel sits on the 275,000-acre Mbirikani Group Ranch which is owned by a 4,000 strong Maasai community. Ol Donyo Lodge blends contemporary design with the rich culture of the Maasai.

The lodge has a wide range of activities on offer including mountain biking, hill hikes and the anti-poaching tracker experience which allows guests to understand how canines are being used in the crucial fight against wildlife. In addition, 'The log pile' at the lodge allows guests to get up close and watch resident wild animals

from the safety of the hide. All rooms include one pair of binoculars, a professional camera body and lens kit for guests to use during their stay, free of charge.

Accommodation

With eight en-suite rooms the hotel can accommodate up to 16 guests. A family suite is available and with prior notice, additional beds can be added to rooms. The option of double or twin rooms is available at booking.

One of the best features to all the rooms are the roof terrace “star beds”. Guests sleep in safety and privacy on the roof, literally, under the stars. In addition, all rooms have their own fire place to enjoy in the evening and three of the suites have private plunge pools.

Children

Children over the age of 5 years are welcome. For older children, the lodge runs The Young Explorer Program which teaches animal tracking and spotting techniques as well as some basic wild-life survival skills.

Food & Drink

Meals and most drinks are included in the room rate. Champagne and luxury wines & spirits are not included.

Payments

For any additional activities or services not included in the room rate, Visa and Mastercard payments are accepted with a 3.5% surcharge. Local currency and USD cash is also accepted and is required for any tips.

Power & Communications

24 / 7 power is provided by solar and back-up generator.

Rooms have power points to charge personal electronics.

Wi-fi is available throughout the lodge.

There is patchy phone signal for local networks.

Getting there

Scheduled flights from Nairobi leave Wilson Airport at 7.30 and 14.00 every day. The flight takes 50 minutes with a quick at Amboseli airstrip to drop and collect passengers before continuing to the Ol Donyo Lodge airstrip. The airstrip is 2 km, 5-minute, drive from the lodge. Chartered flights can be arranged from Nairobi. For those wishing to drive from Nairobi, the journey is 205 km, approximately 4.5 hours.

AMBOSELI & CHYULU HILLS ACCOMMODATION INFO & AMENITIES

Notes:

1. All lodges rooms have; en-suite bathrooms, flush toilets, provide shampoo & conditioner, 24 hour electricity & power points in rooms.
2. All lodges can cater for specific dietary requirements if notified in advance.

Key:

✓	Amenity available at no additional cost
✓ \$	Amenity available at additional cost
✗	Amenity not available

	Tawi Lodge	Ol Donyo Wuas Lodge	Tortilis Camp
Wi-fi	✓	✓	✓
Safe in room	✓	✓	✓
Hair dryers	In reception	✓	Main areas

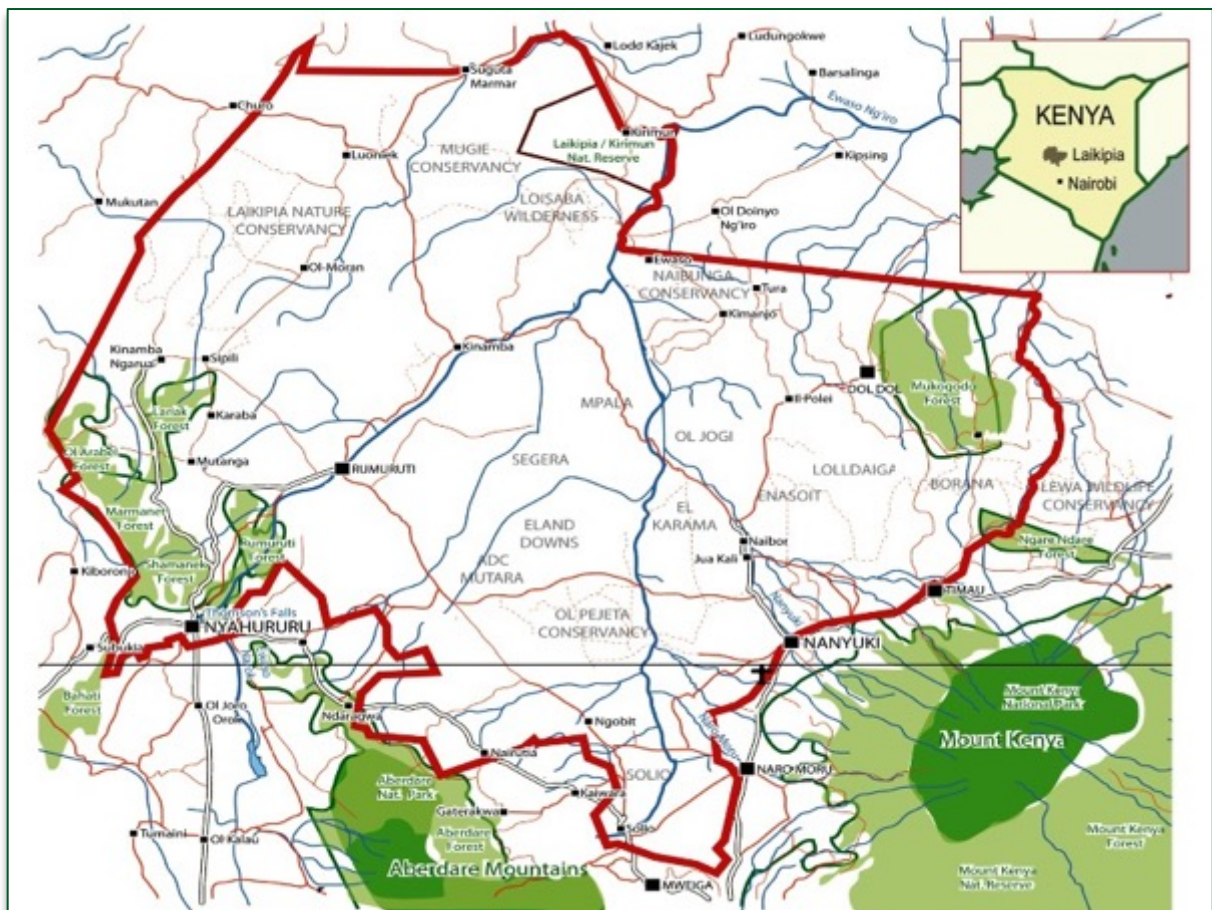
Cots available	✓	✗	✓
Baby-sitting service	✗	✗	✗
Family rooms	✗	✓	✓
Tea & coffee maker in room	✗	✓	✗
Mosquito net	✓	✓	✗
Shower type	Normal shower	Normal shower	Normal shower
Air conditioning	Fan	Fan	✗
Laundry	✓	✓	✓
Day game drives	✓	✓	✓
Night game drives	✓	✓	✗
Guided walks	✓	✓ (10 years +)	✗
Cultural visits	✓\$	✓\$	✗
Bush meals	✓	✓	✓
Sundowners in the bush	✓	✓	✗
Horse / Camel safaris	Camel	Horse (12 years +)	✗
Swimming pool	✓	✓	✓
Spa	✓\$	✓\$	✓
Gym	✗	✗	✗
Wheelchair access	✗	✗	On request
Courtesy airstrip transfers	✓	✓	✓
Late check-out possible	✓\$	✓\$	✓\$

LAIKIPIA CONSERVANCIES

Formerly an area of farms and cattle ranches, landowners troubled by poaching in the region, banded together to establish a conservation area. Today, Laikipia boasts an array of private game reserves and luxury safari camps, along with game populations that thrive within their protected boundaries. As a result of the conservancies being private, Laikipia generally doesn't have as much traffic as other parks in the country. At the same time camps & lodges have freedom to offer a wide range of activities including night game drives, bush walks, seasonal river fishing and swimming and much more that otherwise wouldn't be possible elsewhere.

Increasingly touted as the best game viewing destination in Kenya, Laikipia is also where some of Kenya's most encouraging conservation success stories are unfolding. The area hosts a number of different reserves, conservancies and game ranches, home to incredible amounts of game which can be found near and around the lodges and camps. The top picks would have to be Ol Pejeta, Solio, Lewa, Borana, Loisaba, Sosian and Mugie conservancies.

LAIKIPIA PLATEAU



OL PEJETA CONSERVANCY

Ol Pejeta is a 90,000-acre private wildlife habitat, located on the equator near Nanyuki.

Why visit? The conservancy is most well-known for its thriving numbers of black rhino as well for hosting the two last remaining northern white rhinos in the world. In addition, the only chimpanzee to be found in all of Kenya can be found at the conservancy. The "Big Five", cheetah, gerenuk and Grevy's zebra (the largest and most threatened of the three zebra species), can all be seen here too.

PRICE

Adult USD \$90 per day

Child USD \$45 per day

SIZE

90,000 acres

Recommended No. Nights

3

OL PEJETA ACCOMMODATION

KICHECHE LAIKIPIA



Overview

This eco-award winning, exclusive and luxurious camp sits above a dam and water hole, tucked beneath shady trees, at the foot of Mt. Kenya. The rustic, safari chic design marries beautifully with the natural environment to give you a truly authentic bush experience.

From bush breakfast to sundowner snacks, the creative chefs create delicious, gourmet food using fresh, locally sourced ingredients. A range of inclusive activities are available to fill your days including canoeing, mountain biking and board games. For a fee, guests can also visit nearby canine anti-poaching units and the last two remaining Northern white rhinos. However, the highlight is without a doubt, the opportunity to fly camp in the nearby Loldaiga Hills.

Accommodation

With 6 en-suite tents, this boutique camp can accommodate up to 16 guests. A family tent is available and with prior notice, additional beds can be added to tents if required. The option of double or twin bed set up is available at booking.

Children

Children of all ages are welcome but cots for babies are not available without prior arrangement.

Food & Drink

Meals and most drinks are included. Champagne and luxury wines & spirits are not included.

Payments

Visa and Mastercard payments are accepted with a 5% surcharge. Local currency and USD cash is also accepted and is required for tips.

Power & Communications

24 / 7 power is provided by solar and back-up generator.

Rooms have power points to charge personal electronics.

Wi-fi is available in the main tent.

There is patchy phone signal for local networks.

Getting there

By air, the closest airstrip is Nanyuki Airport and regular scheduled flights from Nairobi leave Wilson Airport every day. Direct flights take 40 minutes while flights via Samburu can take 2 hours. The airstrip is a 20 km, 60-minute, game drive from the lodge. Chartered flights can be arranged from Nairobi. For those wishing to drive from Nairobi, the journey is 220 km, approximately 4.5 hours.

OL PEJETA BUSH CAMP



Overview

Situated on the banks of the Ewaso Nyiro River and surrounded by the African bush, this atmospheric bush camp boasts an exceptional location and outstanding hospitality. Guests can watch game from the comfort of

their rooms, or even while dining al-fresco. Good food and great guiding are at the heart of this homely camp. Without a doubt, one of the most authentic bush camps in Kenya.

Guests can pick from a number of paid activities which include; visiting nearby canine anti-poaching units, seeing the last two remaining Northern white rhino, cycling safari, the junior ranger program and cultural visits.

Accommodation

With 7 en-suite tents, this exclusive camp is ideal for small groups or families and can accommodate up to 16 guests. A family tent is available and with prior notice, additional beds can be added to tents if required. The option of double or twin bed set up is available at booking.

Children

Children must be 5 years or older to stay.

Food & Drink

Meals and most drinks are included. Champagne and luxury wines & spirits are not included.

Payments

Visa and Mastercard payments are accepted with a 4.5% surcharge. Local currency and USD cash is also accepted and is required for any tips.

Power & Communications

24 / 7 power is provided by solar and back-up generator.

Rooms have power points to charge personal electronics.

Wi-fi is available in the majority of the camp.

There isn't reliable phone signal.

Getting there

Nanyuki Airport is the closest airstrip for scheduled flights with regular flights leaving Wilson Airport every day.

Direct flights take 40 minutes while flights via Samburu can take 2 hours. The drive from Nanyuki to the camp is a 35 km, 1-hour game drive. For chartered flights, Ol Pejeta Airstrip is a 5km or 10-minute drive from the camp. For those wishing to drive from Nairobi, the journey is 220 km, approximately 4.5 hours.

SOLIO GAME RESERVE

An extensive, privately owned wildlife sanctuary, Solio Game Reserve lies on the southern fringes of Laikipia, close to the Aberdare mountain range. Occupying the rolling plains between the Aberdare and Mount Kenya national parks, Solio is a beacon in Kenya's conservation landscape, and the country's pioneer in breeding black rhino.

Why visit? The Solio Reserve is internationally recognised as the most successful private rhino breeding reserve in Kenya and visitors will find that sightings of up to 40 rhinoceros at a time are not uncommon. In addition, guests can spot lion, leopard, cheetah and a wide array of plains game while on game drives.

PRICE

Adult USD \$80 per day

Child USD \$60 per day

SIZE

45,000 acres

Recommended No. Nights

3

SOLIO ACCOMMODATION

SOLIO LODGE



Overview

Tucked in the valley between the lofty slopes of Mount Kenya and the peaks of the Aberdare Mountains, Solio lodge is intimate and luxurious. Immaculate rooms, delicious meals and glass-walled mega -showers that overlook the grounds are just some of the riches that await guests.

A range of activities are on offer to make any stay at Solio Lodge a memorable one. Guests can charter a chopper for a scenic flight of the nearby Mt. Kenya or to go trout fishing in the Aberdare National Park. On the ground, mountain bikes or horses can be used to explore the surrounding area and get up close with the resident wildlife.

Accommodation

Made up of five cottages, including a 2-bedroom family cottage, the lodge could comfortably host up to 12 guests at a time. However, additional beds can be added to rooms if required to extend capacity for groups with children. Rooms can be configured as double or twins as required.

Children

Children of all ages are welcome.

Food & Drink

Meals and most drinks are included in the room rate. Champagne and luxury wines & spirits are not included.

Payments

For any additional activities or services not included in the room rate, Visa and Mastercard payments are accepted. Local currency and USD cash is also accepted and is required for any tips.

Power & Communications

24 / 7 power is supplied by the National Grid.

Rooms have power points to charge personal electronics.
 Wi-fi is available throughout the lodge.
 There is good phone signal for local networks.

Getting there

Nanyuki Airport is the closest airstrip for scheduled flights with regular flights leaving Wilson Airport every day. Direct flights take 40 minutes while flights via Samburu can take 2 hours. The drive from Nanyuki to the camp is a 30 km, 1-hour game drive. For chartered flights, Solio Lodge Airstrip is a 2 km or 5-minute drive from the camp. For those wishing to drive from Nairobi, the journey is 220 km, approximately 4.5 hours.

OL PEJETA & SOLIO ACCOMMODATION INFO & AMENITIES

Notes:

1. All hotel rooms have; en-suite bathrooms, flush toilets, provide shampoo & conditioner, 24 hour electricity & power points in rooms.
2. All hotels can cater for specific dietary requirements if notified in advance.
3. All hotels with capability to host guests with disabilities require advance notice to secure appropriate rooms.

Key:

✓	Amenity available at no additional cost
✓ \$	Amenity available at additional cost
✗	Amenity not available

	Kicheche Laikipia	Ol Pejeta Bush Camp	Solio Lodge
Wi-fi	✓	✗	✓
Phone signal	Patchy	Patchy	✓
Safe in room	In reception	✓	✓
Hair dryers	✗	✗	✓
Cots available	✗	✗	✓
Baby-sitting service	✗	✗	✗
Family rooms	✓	✓	✓
Room mini bar	✗	✗	✓
Tea & coffee maker in room	✗	✗	✓
Mosquito net	✗	✗	✗
Shower type	Normal shower	Hot safari bucket shower	Normal shower
Air conditioning	✗	✗	
Laundry	✓	✓	✓
Day game drives	✓	✓	✓
Night game drives	✓	✓	✓
Guided walks	✓	✓	✓

Cultural visits	✗	✓\$	✓\$
Bush meals	✓	✓	✓
Sundowners in the bush	✓	✓	✓
Fly camping	✓\$	✗	✗
Horse / Camel safaris	Horse\$	Both\$	Horse\$
Swimming pool	✗	✗	✗
Spa	✗	✗	✓\$
Gym	✗	Bush gym	Gym in a bag
Wheelchair access	✗	✗	✓
Courtesy airstrip transfers	✓	✓	✓
Late check-out possible	✓\$	✓\$	✓

LEWA WILDLIFE CONSERVANCY (LEWA DOWNS)

Previously a cattle ranch, the conservancy was established in 1995 and covers over 250 km² / 62,000 acres. Recognized as one of the pioneers and frontrunners in rhino conservation efforts, over 15% of Kenya's total rhino population lives in the conservancy.

Why visit? The conservancy is a UNESCO World Heritage Site and home to a wide variety of wildlife including the "Big Five", gerenuk, Grevy's zebra and sitatunga. Lewa holds over 12% of Kenya's rare and endangered eastern black rhino population and the largest single population of Grevy's zebra in the world (approximately 350 individuals).

PRICE

Adult USD \$126 per day

Child USD \$63 per day

SIZE

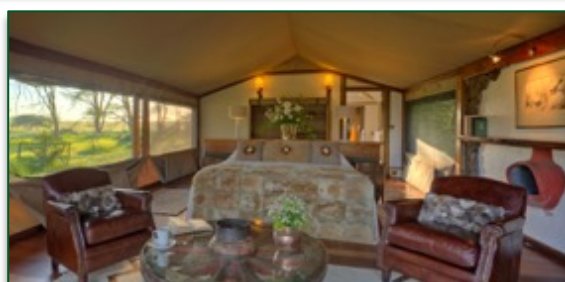
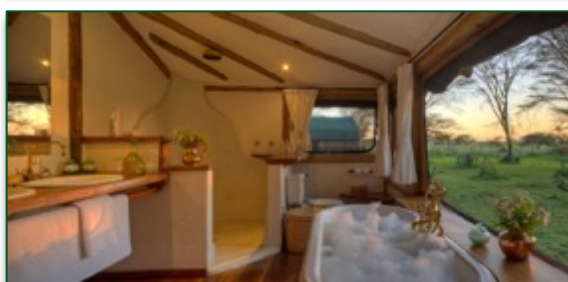
62,000 acres

Recommended No. Nights

3

LEWA ACCOMMODATION

SIRIKOI LODGE



Overview

Named after the river which runs in front of the camp, Sirikoi overlooks a natural waterhole and wetland, which has become a favorite for wildlife. A boutique camp and lodge, it aims to offer a very high-quality, personal experience and strikes a perfect match between luxury with homeliness. There is even a friendly giraffe who managed to get inside the grounds has now become a permanent resident.

Apart from exploring the conservancy on game drives, guests can also enjoy guided walks as well as meals and sundowners in the bush. A host of paid activities can also be arranged through the lodge including scenic fixed wing and helicopter flights, quad biking, Ngare Ndare Forest walk and canopy tour, community visits and horse & camel safaris.

Accommodation

Accommodation consists of four luxury tents, a two-bedroom private cottage, and a three-bedroom private house. The en-suite, tented rooms are identical in design and all angled to face the waterhole and wetlands. Ideal for couples or twins, each tent can accommodate two guests. The self-contained, two-bedroom cottage is ideal for families or two couples travelling together. En-suite bedrooms and separate living and dining rooms allow guests privacy and the option to set their own schedule. The three-bedroom house is independent of the lodge with its own spacious communal areas and private kitchen, from which meals for guests are prepared. Guests can choose to dine in private or at the main camp. All rooms can accommodate 2 guests comfortably and can be arranged as doubles or twins. However, additional beds can be added to rooms if required to extend capacity for groups with children.

Children

Children of all ages are welcome.

Food & Drink

Meals and most drinks are included in the room rate. Champagne and luxury wines & spirits are not included.

Payments

For any additional activities or services not included in the room rate, Visa and Mastercard payments are accepted with a 4% surcharge. Local currency and USD cash is also accepted and is required for any tips.

Power & Communications

24 / 7 power is provided by solar and back-up generator.

Rooms have power points to charge personal electronics.

Wi-fi is available throughout the camp.

There is patchy phone signal for local networks.

Getting there

Regular, commercial flights from Wilson Airport in Nairobi fly to Lewa Airstrip every day. The flight takes approximately 60 minutes. From the airstrip it's a 5 km / 15-minute game drive to the lodge. By road, the drive from Nairobi is 260 km, approximately 5.5 hours.

LEWA SAFARI CAMP





Overview

The main house which serves as the camp communal areas was originally built as a home for the rhino manager in the 1980's. Wooden floors, comfortable seating areas and open fireplaces create a homely and relaxed atmosphere. A verandah overlooking lush green lawns and a sparkling swimming pool make a lovely setting to enjoy meals and sundowners. Owned by the conservancy itself, all profits from this luxurious, tented camp are ploughed back into conservation and the surrounding communities.

Apart from exploring the conservancy on game drives, guests can also enjoy guided walks as well as meals and sundowners in the bush. A host of paid activities are also on offer including; Ngare Ndare Forest walk and canopy tour, cultural visits, horse & camel safaris, helicopter & fixed wing excursions and visit conservancy headquarters to see first-hand how poaching is being combated.

Accommodation

Accommodation consists of 13 en-suite tents, two of which are two-bedroom family tents. All rooms can accommodate two guests comfortably and can be arranged as doubles or twins. Additional beds can be added to rooms if required to extend capacity for groups with children.

Children

Children of all ages are welcome.

Food & Drink

Meals and most drinks are included in the room rate. Champagne and luxury wines & spirits are not included.

Payments

For any additional activities or services not included in the room rate, Visa and Mastercard payments are accepted with a 5% surcharge. Local currency and USD cash is also accepted and is required for any tips.

Power & Communications

24 / 7 power is provided by solar power.

Rooms have power points to charge personal electronics.

Wi-fi is available in the main house.

There is patchy phone signal for local networks.

Getting there

Regular, commercial flights from Wilson Airport in Nairobi fly to Lewa Airstrip every day. The flight takes approximately 60 minutes. From the airstrip it's a 10 km / 20-minute game drive to the lodge. By road, the drive from Nairobi is 270 km, approximately 5.5 hours.

KIFARU HOUSE



Overview

Located on a small hill in the Lewa Conservancy, each cottage at this exclusive lodge has incredible views of the surrounding area. An elegant, combined lounge and dining area with stone fireplaces at either end provide an idyllic setting for meals and evening drinks.

Apart from excellent game drives, guided walks and bush meals & sundowners, guests can also choose from a host of paid activities including; Ngare Ndare Forest walk and canopy tour, horse & camel safaris, helicopter & fixed wing excursions and visit conservancy headquarters to see first-hand how poaching is being combated.

Accommodation

Accommodation consists of five cottages, one of which is a two-bedroom family unit, all with luxurious en-suite bathrooms. With a total capacity of 12, Kifaru House is perfect for groups. All rooms can be arranged as doubles or twins and additional beds can be added to rooms if required.

Children

Children of all ages are welcome.

Food & Drink

Meals and most drinks are included in the room rate. Champagne and luxury wines & spirits are not included.

Payments

For any additional activities or services not included in the room rate, Visa and Mastercard payments are accepted. Local currency and USD cash is also accepted and is required for any tips.

Power & Communications

24 / 7 power is provided by solar and back-up generator.

Rooms have power points to charge personal electronics.

Wi-fi is available throughout the lodge.

There is patchy phone signal for local networks.

Getting there

Regular, commercial flights from Wilson Airport in Nairobi fly to Lewa Airstrip every day. The flight takes approximately 60 minutes. From the airstrip it's a 10 km / 20-minute game drive to the lodge. By road, the drive from Nairobi is 270 km, approximately 5.5 hours.

LEWA HOUSE



Overview

Set on a hill, Lewa house has panoramic views of the rolling landscape of the conservancy, the Mathews Range and the sacred mountain of the Samburu, Mt. Ol Lolokwe. Spacious and stylishly designed common areas allow guests to congregate for evening drinks and meals. The standard of food is high and the menu is seasonal with many ingredients grown on the property.

Apart from game drives, guided walks, fly camping and bush meals & sundowners, guests can also visit Lewa's nearby, archeological hand-axe site. A host of paid activities are available including; Ngare Ndare Forest walk and canopy tour, horse & camel safaris, community visits, fishing, helicopter & fixed wing excursions and a visit to the conservancy's headquarters to see first-hand how poaching is being combated.

Accommodation

Accommodation consists of 4 large, one-room earth pods, each of which sleeps two or three (or more with children), and three large, two-room cottages, each sleeping four in a double and a twin. Ideal for groups, parties of 14 can book the whole property exclusively. Lewa house is very flexible with sleeping arrangements and all rooms can be set up as doubles or twins and additional beds can be added to rooms if required.

Children

Children of all ages are welcome.

Food & Drink

Meals and most drinks are included in the room rate. Champagne and luxury wines & spirits are not included.

Payments

For extras not included in the room rate, Visa and Mastercard payments are accepted with a 5% surcharge. Local currency and USD cash is also accepted and is required for any tips.

Power & Communications

24 / 7 power is provided by solar power.

Rooms have power points to charge personal electronics.

Wi-fi is available in the main house.

There is patchy phone signal for local networks.

Getting there

Regular, commercial flights from Wilson Airport in Nairobi fly to Lewa Airstrip every day. The flight is approximately 60 minutes. From the airstrip it's a 10 km / 20-minute game drive to the lodge. By road, the drive from Nairobi is 270 km, approximately 5.5 hours.

LEWA WILDERNESS



Overview

Located on a steep valley overlooking the Western Marania Valley, Lewa Wilderness is a beautiful, homely lodge. The common areas in the main house, which is where the lodge owners and hosts live, provide areas for guests to relax and enjoy afternoon tea. Meals are served on a large communal table adding to the social, homely feel.

Apart from game drives in electric safari vehicles, guests can enjoy guided walks, swimming in nearby waterfalls, tennis, seasonal crab fishing and bush meals & sundowners. In addition, a range of paid activities are also available including; Ngare Ndare Forest walk and canopy tour, a visit to the archeological hand-axe site, horse & camel safaris, fly camping, helicopter & fixed wing excursions, community visits, rhino tracking and a visit conservancy headquarters to see first-hand how poaching is being combated.

Accommodation

Accommodation consists of 12 en-suite cottages, including family suites with two en-suite bedrooms. Guests can choose from garden or hillside cottages, which each come with its own lounge and fireplace. Doubles or twin rooms are available and additional beds can be added to rooms if required.

Children

Children of all ages are welcome.

Food & Drink

Meals and most drinks are included in the room rate. Champagne and luxury wines & spirits are not included.

Payments

For any additional activities or services not included in the room rate, Visa and Mastercard payments are accepted with a 5% surcharge. Local currency and USD cash is also accepted and is required for any tips.

Power & Communications

24 / 7 power is provided by solar power.

Rooms have power points to charge personal electronics.

Wi-fi is available in the main house.

There is patchy phone signal for local networks.

Getting there

Regular, commercial flights from Wilson Airport in Nairobi fly to Lewa Airstrip every day. The flight takes approximately 60 minutes. From the airstrip it's a 10 km / 20-minute game drive to the lodge. By road, the drive from Nairobi is 270 km, approximately 5.5 hours.

Note: Lewa Wilderness is closed in April, May and November

LEWA ACCOMMODATION INFO & AMENITIES

Notes:

1. All hotel rooms have; en-suite bathrooms, flush toilets, provide shampoo & conditioner, 24 hour electricity & power points in rooms.
2. All hotels can cater for specific dietary requirements if notified in advance.
3. All hotels with capability to host guests with disabilities require advance notice to secure appropriate rooms.

Key:

✓	Amenity available at no additional cost
✓ \$	Amenity available at additional cost
✗	Amenity not available

	Sirikoi	Lewa Safari Camp	Kifaru House	Lewa House	Lewa Wilderness
Wi-fi	✓	✓	✓	Common areas	Common areas
Phone signal	✓	Patchy	Patchy	Patchy	Patchy
Safe in room	✓	✓	✓	✓	In reception
Hair dryers	✓	✗	✓	✗	✗
Cots available	✓	✓	✓	✓	✓
Baby-sitting service	✓ \$	✗	✗	✓ \$	✓ \$

Family rooms	✓	✓	✓	✓	✓
Room mini bar	✗	✗	✓	✗	✓
Tea & coffee maker in room	✓	✗	✗	✗	✗
Mosquito net	✗	✗	✓	✓	✗
Shower type	Normal shower	Normal shower	Normal shower	Normal shower	Normal shower
Air conditioning	✗	✗	✗	✗	✗
Laundry	✓	✓	✓	✓	✓
Day game drives	✓	✓	✓	✓	✓
Night game drives	✓	✓	✓	✓	✓
Guided walks	✓	✓	✓	✓	✓
Cultural visits	✓\$	✓\$	✓\$	✓\$	✓\$
Bush meals	✓	✓	✓	✓	✓
Sundowners in the bush	✓	✓	✓	✓	✓
Fly camping	✗	✗	✗	✓	✓\$
Plane / chopper excursions	✓\$	✓\$	✓\$	✓\$	✓\$
Fishing	✗	✗	✗	✓\$	Crab fishing
Horse / Camel safaris	Both\$	Both\$	Both\$	Horse\$	Both\$
Swimming pool	✓	✓	✓	✓	✓
Spa	✓\$	✓\$	In-room massage \$	✓\$	✓\$
Gym	✓	✗	✗	✗	✓
Wheelchair access	✗	✗	✗	✓	✓
Courtesy airstrip transfers	✓	✓	✓	✓	✓
Late check-out possible	✓\$	✓\$	✓\$	✗	✗

BORANA CONSERVANCY

One of the newest conservancies, Borana is often hailed as one of the most successful conservancies for Rhino conservation efforts.

Why visit? Along with rhino, Borana has a wide diversity of wildlife: lion, cheetah, leopard, African dog, buffalo, eland, oryx, Jackson's hartebeest, herds of Grant's gazelle, impala, gerenuk and plains zebra. For the Disney fans, Borana is also home to the rocky outcrop that inspired Disney's Pride Rock.

PRICE

Adult USD \$115 per day
Child USD \$58 per day

SIZE

35,000 acres

Recommended No. Nights

3

BORANA ACCOMMODATION

BORANA LODGE



Overview

Established in 1993, Borana Lodge is located on a rocky hill that provides beautiful views of the conservancy and animals below. Common areas are split across two separate sites, each with different views. A nearby waterhole is frequented by wildlife and allows guests to enjoy game from the comfort of the lodge. Privately owned and run by the Dyer family, the lodge has a nice, informal family feel.

Borana Lodge is most famous for its wide range of activities and guests can enjoy game drives, guided walks, horse riding, swimming in nearby waterfalls, seasonal crab fishing, exploring for cave paintings, behind-the-scenes conservation activities, running with anti-poaching rangers, visiting 'Pride Rock', mountain biking and bush meals & sundowners. In addition, a range of paid activities are also available including; Ngare Ndare Forest walk and canopy tour, quad biking, fishing, fly camping, overnight horse safari, yoga, helicopter & fixed wing excursions and community visits.

Accommodation

Accommodation consists of eight unique en-suite cottages, two of which are double-roomed for groups or families. Guests can choose from doubles or twin rooms and additional beds can be added to certain rooms if required.

Children

Children of all ages are welcome and can take part in a range of specifically, child friendly activities including treasure hunts, Maasai games and more.

Food & Drink

Meals and most drinks are included in the room rate. Champagne and luxury wines & spirits are not included.

Payments

For any additional activities or services not included in the room rate, Visa and Mastercard payments are accepted with a 3% surcharge. Local currency and USD cash is also accepted and is required for any tips.

Power & Communications

24 / 7 power is provided by solar power and back-up generator.

Rooms have power points to charge personal electronics.

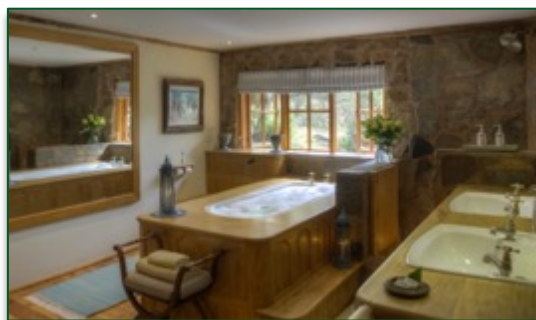
Wi-fi is available throughout the camp.

There is patchy phone signal for local networks.

Getting there

Regular, commercial flights from Wilson Airport in Nairobi fly to Lewa Airstrip every day. The flight takes approximately 60 minutes. From the airstrip it's a 30 km / 60-minute game drive to the lodge. Chartered flights can make use of the lodges' private airstrip which is a 10 km / 15-minute game drive. By road, the journey from Nairobi is 240 km, approximately 5 hours.

LARAGAI HOUSE



Overview

Best described as 'African Baronial', this grand, thatched roof house is perched on a small hill, providing idyllic vistas of the Borana conservancy. Once a family home, the property is decorated with custom-made ebony furniture, dark-wood antiques and furnishings that give it a stately feel. All rooms are located in the house, making it ideal for groups and families.

An infinity pool overlooking the Borana conservancy allows guests to escape the afternoon heat and take in the breathtaking views. A clay tennis court and extensive games room with table tennis, darts, croquet and boules is available to keep the whole family entertained. Game drives, guided walks, horse riding, swimming in nearby waterfalls, seasonal crab fishing, exploring for cave paintings, behind-the-scenes conservation activities, paddle

boarding, mountain biking and bush meals & sundowners are also all on offer. In addition, paid activities include; Ngare Ndare Forest walk and canopy tour, quad biking, fishing, fly camping, helicopter & fixed wing excursions and community visits.

Accommodation

Accommodation consists of eight en-suite unit with a total capacity of 16. Two units are double-roomed for groups or families. Guests can choose from doubles or twin rooms and additional beds can be added to certain rooms if required.

Children

Children of all ages are welcome and can take part in a range of specifically, child friendly activities including treasure hunts, Maasai games, ranger training and more.

Food & Drink

Meals and most drinks are included in the room rate. Champagne and luxury wines & spirits are not included.

Payments

For any additional activities or services not included in the room rate, Visa and Mastercard payments are accepted with a 3% surcharge. Local currency and USD cash is also accepted and is required for any tips.

Power & Communications

24 / 7 power is provided by solar power.

Rooms have power points to charge personal electronics.

Wi-fi is available throughout the camp.

There is patchy phone signal for local networks.

Getting there

Regular, commercial flights from Wilson Airport in Nairobi fly to Lewa Airstrip every day. The flight takes approximately 60 minutes. From the airstrip it's a 45 km / 90-minute game drive to the lodge. Chartered flights can make use of the house's private airstrip which is a 10 km / 20-minute game drive. By road, the journey from Nairobi is 250 km, approximately 5.5 hours.

LENGISHU HOUSE





Overview

This luxurious, exclusive-use family home boasts amazing views of the Laikipia plains and Mt. Kenya. Friendly staff are on hand to cater for your every need and guests have the freedom to choose their own daily program. Built using locally sourced materials and designed to blend into the environment, the house is tastefully decorated in neutral tones and exquisite furniture. Guests can choose to dine in the spacious dining room with vaulted ceiling or on the covered veranda for an al fresco breakfast or meal under the stars.

Activities on offer include mountain biking, Petanque, billiards, darts, sketching / painting, rhino tracking, swimming in nearby waterfalls, exploring for cave painting, crab fishing, game drives, horse riding, bush walks, behind-the-scenes conservation activities and bush meals & sundowners. In addition, paid activities include; Ngare Ndare Forest walk and canopy tour, quad biking, fishing, fly camping, helicopter & fixed wing excursions and community visits.

Accommodation

Accommodation consists of four cottages and a two-bedroomed family suite. All rooms are en-suite and the house can host up to 12 adults comfortably, making it perfect for small groups and families. Guests can choose from doubles or twin rooms and additional beds can be added to certain rooms to extend capacity for children.

Children

Children of all ages are welcome and can take part in a range of specifically, child friendly activities including ranger training and games around the house.

Food & Drink

Meals and most drinks are included in the room rate. Champagne and luxury wines & spirits are not included.

Payments

For any additional activities or services not included in the room rate, Visa and Mastercard payments are accepted with a 3% surcharge. Local currency and USD cash is also accepted and is required for any tips.

Power & Communications

24 / 7 power is provided by solar power.

Rooms have power points to charge personal electronics.

Wi-fi is available throughout the camp but don't expect high speeds.

There is patchy phone signal for local networks.

Getting there

Regular, commercial flights from Wilson Airport in Nairobi fly to Lewa Airstrip every day. The flight takes approximately 60 minutes. From the airstrip it's a 45 km / 90-minute game drive to the lodge. Chartered flights can make use of The Borana Conservancy Airstrip which is a 10 km / 15-minute game drive. By road, the journey from Nairobi is 250 km, approximately 5.5 hours.

BORANA ACCOMMODATION INFO & AMENITIES

Notes:

1. All hotel rooms have; en-suite bathrooms, flush toilets, provide shampoo & conditioner, 24 hour electricity & power points in rooms.
2. All hotels can cater for specific dietary requirements if notified in advance.
3. All hotels with capability to host guests with disabilities require advance notice to secure appropriate rooms.

Key:

✓	Amenity available at no additional cost
✓ \$	Amenity available at additional cost
✗	Amenity not available

	Borana Lodge	Laragai House	Lengishu House
Wi-fi	✓	✓	✓
Phone signal	✓	✓	Patchy
Safe in room	✓	✓	✓
Hair dryers	✓	✓	✓
Cots available	✓	✓	✓
Baby-sitting service	✓ \$	✓ \$	✓ \$
Family rooms	✓	✓	✓
Room mini bar	✓	✓	✓
Tea & coffee maker in room	✗	✗	✓
Mosquito net	✗	✗	✗
Shower type	Normal shower	Normal shower	Normal shower
Air conditioning	✗	✗	✗
Laundry	✓	✓	✓
Day game drives	✓	✓	✓
Night game drives	✓	✓	✓
Guided walks	✓	✓	✓
Cultural visits	✓ \$	✓ \$	✓ \$
Bush meals	✓	✓	✓
Sundowners in the bush	✓	✓	✓
Fly camping	✓ \$	✓ \$	✓ \$
Plane / chopper excursions	✓ \$	✓ \$	✓ \$

Fishing	✓\$	✓\$	✓\$
Horse / Camel safaris	Horse	Horse (one free ride per person)	Horse (one free ride per person)
Swimming pool	✓	✓	✓
Spa	In-room massage \$	✓\$	✓\$
Gym	✗	✓	✓
Wheelchair access	✓	✓	✓
Courtesy airstrip transfers	✓	✓	✓
Late check-out possible	✓\$	✓\$	✓\$

LOISABA CONSERVANCY

With limited guest numbers, an abundance of wildlife, exquisite accommodation and a wide range of adventurous and exciting activities, Loisaba is without a doubt one of the highlights for anyone visiting Kenya.

Why visit? Low tourist numbers and an abundance of animals mean guests will enjoy private safaris and, in many cases, won't see other vehicles on their game drives. Animals that can be spotted in the conservancy include lion, cheetah, leopard, African dog, buffalo, elephant, eland, oryx, Jackson's hartebeest, herds of Grant's gazelle, impala, gerenuk and plains zebra. The wide variety of exciting activities on offer is another big reason to visit.

PRICE

Adult USD \$110 per day

Child USD \$55 per day

SIZE

56,000 acres

Recommended No. Nights

3

LOISABA ACCOMMODATION

OI MALO LODGE



Overview

This exclusive, boutique, four-bedroom property offers the perfect mix of home comfort and luxury with a gentle balance of feeling at one with nature. Nestled in the cliffs each room has its own veranda and complete privacy. Connected to its slightly larger sister property, Oi Malo House, guests can enjoy first class luxury and privacy.

Guests can enjoy a wide range of activities which include; game drives, guided walks, horse and camel riding, swimming in nearby waterfalls, tubing, seasonal fishing, Samburu beading workshop, overnight stay in the leopard blind, bush meals & sundowners. In addition, a range of paid activities are also available including; fly camping, helicopter & fixed wing excursions and community visits.

Accommodation

The lodge has four double rooms and a capacity of 10 guests. All rooms feature en-suite bathrooms, oversized hot tubs and private verandahs. Guests can choose from doubles or twin rooms and additional beds can be added to certain rooms if required.

Children

Children of all ages are welcome.

Food & Drink

Meals and most drinks are included in the room rate. Champagne and luxury wines & spirits are not included.

Payments

Card payments are not accepted so guests must pay for non-inclusive items with cash. Local currency is preferred but US Dollars and Pound Sterling would also be accepted. This also applies for tips.

Power & Communications

24 / 7 power is provided by solar power and back-up generator.

Rooms have power points to charge personal electronics.

Wi-fi is available in the main common area.

There is patchy phone signal for local networks.

Getting there

Regular, commercial flights from Wilson Airport in Nairobi fly to Loisaba Airstrip every day. The flight takes approximately 90 minutes. From the airstrip it's a 20 km / 40-minute game drive to the lodge. Chartered flights can make use of the lodges' private airstrip which is which is less than 1 km away. By road, the journey from Nairobi is 285 km, approximately 6.5 hours.

Note: OI Malo Lodge is closed in April, May and November

OI MALO HOUSE



Overview

Connected to Ol Malo Lodge, the house is slightly larger in size but shares the same exclusive, boutique feel. The main house has a large sitting and dining room, perfect for enjoying meals and discussing the day's activities.

Guests can enjoy a wide range of activities which include; game drives, guided walks, horse and camel riding, swimming in nearby waterfalls, tubing, seasonal fishing, Samburu beading workshop, overnight stay in the leopard blind, bush meals & sundowners. In addition, a range of paid activities are also available including; Ngare Ndare Forest walk and canopy tour, fly camping, helicopter & fixed wing excursions and community visits.

Accommodation

The house hosts three, en-suite double bedrooms while separate cottages add another three, en-suite double bedrooms. All rooms feature en-suite bathrooms, oversized hot tubs and private verandahs. Guests can choose from doubles or twin rooms and additional beds can be added to certain rooms if required.

Children

Children of all ages are welcome.

Food & Drink

Meals and most drinks are included in the room rate. Champagne and luxury wines & spirits are not included.

Payments

Card payments are not accepted so guests must pay for non-inclusive items with cash. Local currency is preferred but US Dollars and Pound Sterling would also be accepted. This also applies for tips.

Power & Communications

24 / 7 power is provided by solar power and back-up generator.

Rooms have power points to charge personal electronics.

Wi-fi is available in the main common area.

There is patchy phone signal for local networks.

Getting there

Regular, commercial flights from Wilson Airport in Nairobi fly to Loisaba Airstrip every day. The flight takes approximately 90 minutes. From the airstrip it's a 20 km / 40-minute game drive to the lodge. Chartered flights can make use of the lodges' private airstrip which is less than 1 km away. By road, the journey from Nairobi is 285 km, approximately 6.5 hours.

Note: Ol Malo House is closed in April, May and November

SABUK LODGE



Overview

This charming camp lies on the edge of a remote gorge in central Laikipia, through which the Ewaso Nyiro river runs. Rustic, full of character and charm, the lodge is ideal for fun-loving families, wilderness-seeking couples or groups of friends. Cleverly designed spaces with cushions and day beds provide pockets for guests to relax in.

Guests can enjoy a range of activities which include; game drives (additional fees for Loisaba Conservancy), guided walks, horse & camel riding, tubing, hiking, running, table tennis, seasonal fishing and meals & sundowners in the bush. Paid activities on offer include helicopter excursions, fly camping and cultural visits.

Accommodation

Sabuk can host a total of 24 guests in eight open walled, beautifully designed rooms & cottages. Cottages and rooms specifically for families are also available. All rooms have mosquito nets above the beds with some having additional 'star beds', for guests to fall asleep under the stars. Most rooms are en-suite with deep stone baths that overlook the gorge below. Guests can choose from doubles or twin rooms and additional beds can be added to certain rooms if required.

Children

Children of all ages are welcome.

Food & Drink

Meals and most drinks are included in the room rate. Champagne and luxury wines & spirits are not included.

Payments

Card payments are not accepted so guests must pay for non-inclusive items with cash. Local currency is preferred but US Dollars and Pound Sterling would also be accepted. This also applies for tips.

Power & Communications

24 / 7 power is provided by solar power.

Power points to charge electronics are located in the common area.

Wi-fi is available in the main lounge area.

There is patchy phone signal for local networks.

Getting there

Regular, commercial flights from Wilson Airport in Nairobi fly to Loisaba Airstrip every day. The flight takes approximately 90 minutes. From the airstrip it's a 30 km / 60-minute game drive to the lodge. By road, the journey from Nairobi is 265 km, approximately 6 hours.

LOISABA TENTED CAMP



Overview

This friendly, modern, sophisticated lodge re-opened its doors in 2016, after a devastating bushfire in 2013 tore through the original multi-award-winning camp. The hallmarks of its success remain and guests can expect incredible views of Mt. Kenya and the Loisaba Conservancy, luxurious rooms, delightful food and a wide range of activities to suit everyone's taste.

Activities include; game drives, guided walks, seasonal fishing, mountain biking, warrior training program for kids, anti-poaching sniffer dog experience, beading workshop, tracking & bush skills class, a visit to the anti-poaching center and meals & sundowners in the bush. Paid activities on offer include fly camping, horse & camel safaris and cultural visits.

Accommodation

The camp is made up of eight 'standard' tents and four family tents, all en-suite. Guests can choose from doubles or twin rooms and additional beds can be added to certain rooms if required.

Children

Children of all ages are welcome.

Food & Drink

Meals and most drinks are included in the room rate. Champagne and luxury wines & spirits are not included.

Payments

For any additional activities or services not included in the room rate, Visa and Mastercard payments are accepted. Local currency and USD cash is also accepted and is required for any tips.

Power & Communications

24 / 7 power is provided by solar power and back-up generator.

Rooms have power points to charge personal electronics.

Wi-fi is available throughout the camp.

There is patchy phone signal for local networks.

Getting there

Regular, commercial flights from Wilson Airport in Nairobi fly to Loisaba Airstrip every day. The flight takes approximately 90 minutes. From the airstrip it's a 15 minute game drive to the camp. By road, the journey from Nairobi is 285 km, approximately 6.5 hours.

LOISABA LODO SPRINGS



Overview

Newly opened in 2019, Loisaba Lodo Springs is a spacious and modern camp. Created for the discerning, well-seasoned, high-end traveler, guests will enjoy the beautiful vistas and ultra-private experience. Service is paramount at Lodo Springs with each room assigned a 'Guest Ambassador' to cater to guests' every need.

Flexibility with activities is another draw card and guests can enjoy game drives in private vehicles, guided walks, seasonal fishing, mountain biking, warrior training program for kids, anti-poaching sniffer dog experience, beading workshop, tracking & bush skills class, a visit to the anti-poaching center and meals & sundowners in the bush. Paid activities on offer include fly camping, horse & camel safaris and cultural visits.

Accommodation

Eight individual, en-suite tented rooms overlook the Laikipia Plateau with views of Mt. Kenya. Each room has its own lounge area with chairs, veranda and sun beds. A tent specifically suited for families is available and additional beds can be added to certain rooms if required. Guests can choose from double or twin rooms.

Children

Children of all ages are welcome however the lodge has a more adult atmosphere.

Food & Drink

Meals and most drinks are included in the room rate. Champagne and luxury wines & spirits are not included.

Payments

For any additional activities or services not included in the room rate, Visa and Mastercard payments are accepted. Local currency and USD cash is also accepted and is required for any tips.

Power & Communications

24 / 7 power is provided by solar power and back-up generator.

Rooms have power points to charge personal electronics.

Wi-fi is available throughout the camp.

There is patchy phone signal for local networks.

Getting there

Regular, commercial flights from Wilson Airport in Nairobi fly to Loisaba Airstrip every day. The flight takes approximately 90 minutes. From the airstrip it's a 15 km / 30-minute game drive to the camp. By road, the journey from Nairobi is 285 km, approximately 6.5 hours.

LOISABA ACCOMMODATION INFO & AMENITIES

Notes:

1. All hotel rooms have; en-suite bathrooms, flush toilets, provide shampoo & conditioner and 24 hour electricity.
2. All hotels can cater for specific dietary requirements if notified in advance.
3. All hotels with capability to host guests with disabilities require advance notice to secure appropriate rooms.

Key:

✓	Amenity available at no additional cost
✓ \$	Amenity available at additional cost
✗	Amenity not available

	Oi Malo Lodge	Oi Malo House	Sabuk Lodge	Loisaba Tented Camp	Loisaba Lodo Springs

Wi-fi	In central area	In central area	In central area	✓	✓
Power points in rooms for charging	✓	✓	In central area	✓	✓
Phone signal	Patchy	Patchy	Patchy	Patchy	Patchy
Safe in room	✓	✓	✓	✓	✓
Hair dryers	✓	✓	✗	✓	✓
Cots available	✓	✓	✓	✓	✓
Baby-sitting service	✓\$	✓\$	✓\$	✓\$	✓\$
Family rooms	✓	✓	✓	✓	✓
Room mini bar	✗	✗	✗	✗	✗
Tea & coffee maker in room	✗	✗	✗	✗	✓
Mosquito net	✗	✗	✓	✗	✗
Shower type	Normal shower	Normal shower	Normal shower	Normal shower	Normal shower
Air conditioning	✗	✗	✗	✗	✗
Laundry	✓	✓	✓	✓	✓
Day game drives	✓	✓	✓	✓	✓
Night game drives	✓	✓	✓	✓	✓
Guided walks	✓	✓	✓	✓	✓
Cultural visits	✓	✓	✓\$	✓\$	✓\$
Bush meals	✓	✓	✓	✓	✓
Sundowners in the bush	✓	✓	✓	✓	✓
Fly camping	✓\$	✓\$	✓\$	✗	✗
Plane / chopper excursions	✓\$	✓\$	✓\$	✗	✗
Fishing	✓	✓	✓	✓	✓
Horse / Camel safaris	Both	Both	Both	Both \$	Both \$
Swimming pool	✓	✓	✓	✓	✓
Spa	✓\$	✓\$	✓\$	✓\$	✓\$
Gym	✗	✗	✗	✗	✗
Wheelchair access	✗	✗	✓	✓	✗
Courtesy airstrip transfers	✓	✓	✓	✓	✓
Late check-out possible	✗	✗	✓\$	✓	✓

SOSIAN RANCH

Sprawled at an elevation of almost 6,000 feet, Sosian Ranch is a privately-owned conservation area and working cattle ranch. Due to conservation efforts on the ranch wildlife flourishes and guests can expect to see over 70 species of mammals, 30 species of reptiles and over 350 species of birds.

Why visit? Along with the Big 5, cheetah, wild dog and plains game, guests can hope to see several rare species including the endemic Jackson's hartebeest, Grevy's zebra and reticulated giraffe. Low tourist numbers and an exciting assortment of activities mean your stay will be a memorable one.

PRICE

Adult USD \$115 per day

Child USD \$58 per day

SIZE

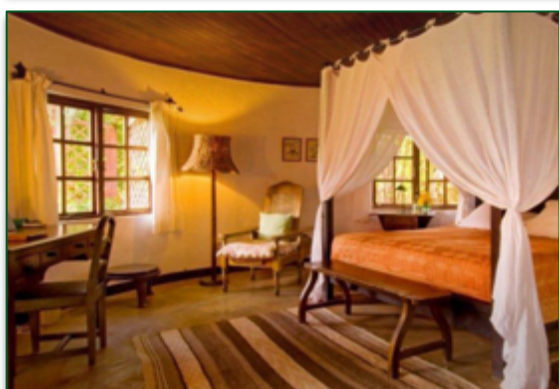
24,000 acres

Recommended No. Nights

3

SOSIAN ACCOMMODATION

SOSIAN LODGE



Overview

A working cattle ranch, Sosian is an intimate and homely safari lodge. In the shared area lounge you'll find large comfy sofas, bookshelves full of intriguing items and a grand stone fireplace. A fine dining room and shady terrace provide the locations for meals which are always made fresh from the organic garden on-site.

Guests can take advantage of a range of activities including; game drives, guided walks, seasonal fishing, horse & camel riding, archery, fly camping, tennis, kayaking, tubing, a bush cattle ranching experience, wild dog

tracking and meals & sundowners in the bush. Paid activities on offer include horse & camel safaris (with fly camping), helicopter excursions and cultural visits.

Accommodation

Accommodation consists of eight, bright and homely rooms, including a family room. All rooms are en-suite with spacious bathrooms. Most can accommodate an additional bed for children if required and guests can choose from double or twin rooms.

Children

Children of all ages are welcome however many activities are only suitable for children aged 12+.

Food & Drink

Meals and most drinks are included in the room rate. Champagne and luxury wines & spirits are not included.

Payments

For any additional activities or services not included in the room rate, Visa and Mastercard payments are accepted with a 3% surcharge. Local currency and USD cash is also accepted and is required for any tips.

Power & Communications

24 / 7 power is provided by generator.

Rooms have power points to charge personal electronics.

Wi-fi is available in the reception and common areas.

There is patchy phone signal for local networks.

Getting there

Regular, commercial flights from Wilson Airport in Nairobi fly to Loisaba Airstrip every day. The flight takes approximately 90 minutes. From the airstrip it's a 30 km / 60-minute game drive to the camp. Chartered flights can land at Sosian's private airstrip which is a 5-minute drive from the camp. By road, the journey from Nairobi is 285 km, approximately 6.5 hours.

MUGIE CONSERVANCY

With its open savannah, dotted with iconic acacia trees, scrubby bush and olive tree forests, Mugie is diverse and home to some of the threatened and endangered keystone species.

Why visit? Mugie Conservancy provides a haven for animals, birds, and plant life. Grevy's zebra, Jackson's hartebeest, (which are endemic to the area), big cats, buffalo, elephants, reticulated giraffe, storks, and birds of prey, are just a few of the wonderful creatures that roam Mugie's plains and forests.

PRICE

Adult USD \$100 per day

Child USD \$50 per day

SIZE

50,000 acres

Recommended No. Nights

3

MUGIE ACCOMMODATION

EKORIANS MUGIE CAMP



Overview

Ekorian's Mugie Camp feels like a home away from home, and caters to the whole family. The eco-conscious camp was awarded a 'silver' rating by the Kenya eco-tourism board. Using locally sourced materials it has been designed to fit in with its environment and provide guests with a comfortable and authentic bush experience.

Guests can take advantage of a range of activities including; game drives, guided walks, volleyball, bird watching, traditional archery, spear throwing, lawn games, seasonal fishing, camel riding, fly camping, kayaking, animal tracking and meals & sundowners in the bush. Paid activities on offer include golf and cultural visits.

Accommodation

Accommodation consists of six en-suite tents, one of which features an annex, specifically designed for children. Tents are raised on wooden decks and covered with papyrus roofs and can be configured as doubles or twins. Most tents can accommodate an additional bed for children if required.

Children

Children of all ages are welcome.

Food & Drink

Meals and most drinks are included in the room rate. Champagne and luxury wines & spirits are not included.

Payments

For any additional activities or services not included in the room rate, Visa and Mastercard payments are accepted. Local currency and USD cash is also accepted and is required for any tips.

Power & Communications

24 / 7 power is provided by solar panels.

Power points to charge personal electronics are located in main mess area.

Wi-fi is available in the reception and common areas.

There is good phone signal for local networks.

Getting there

Regular, commercial flights from Wilson Airport in Nairobi fly to Loisaba Airstrip every day. The flight takes approximately 90 minutes. From the airstrip it's a 30 km / 60-minute game drive to the camp. Chartered flights can land at the private airstrip which is a 10 km / 20-minute drive from the camp. By road, the journey from Nairobi is 300 km, approximately 7 hours.

GOVERNORS' MUGIE HOUSE



Overview

Governors' Mugie House is the latest addition to the Governors' Camp Collection. Perched on a hill in the Mugie Conservancy, the property consists of eight stone cottages each with sweeping views of the Laikipia landscape. A large main house with open log fires will host guests for relaxing cocktails and scrumptious meals, prepared from a creative menu with ingredients sourced from the vegetable garden.

An infinity pool offers lovely shaded areas and a casual alfresco dining area, while a waterhole set in front of Mugie House attracts a variety of wildlife with a hide to offer some close encounters. Guests can also make the most of Mugie Conservancy's nine-hole golf course, which is perfect for enjoying a round between travel companions or alongside other golf-loving guests. Guests can also visit the nearby anti-poaching unit and research teams to learn about their important work and experience animal tracking.

Accommodation

Able to accommodate a total of 18 guests, accommodation consists of five en-suite double cottages, one suite and a family cottage with en-suite double and twin rooms. The suite and family cottage each have their own private plunge pool, with views across the Laikipia plains. Rooms can be configured as doubles or twins with prior notice.

Children

Children of all ages are welcome. Special children's meals and early mealtimes are available. The Family cottage sleeps up to four persons, high chairs and baby-sitting service are available on request.

Food & Drink

Meals and most drinks are included in the room rate. Champagne and luxury wines & spirits are not included.

Payments

For any additional activities or services not included in the room rate, Visa and Mastercard payments are accepted. Local currency and USD cash (printed after the year 2,000) is also accepted and is required for any tips.

Power & Communications

24 / 7 power is provided by solar panels.

Power points to charge personal electronics are located in rooms and the main house.

Wi-fi is available in the main house.

There is good phone signal for local networks.

Getting there

Regular, commercial flights from Wilson Airport in Nairobi fly to Loisaba Airstrip every day. The flight takes approximately 90-minutes, with an additional 90-minute game drive transfer to Mugie House. Chartered flights can land at the house's private airstrip which is a 20-minute game drive away. By road, the journey from Nairobi is 300 km, approximately 6 hours.

SOSIAN & MUGIE ACCOMMODATION INFO & AMENITIES

Notes:

1. All hotel rooms have; en-suite bathrooms, flush toilets and provide shampoo & conditioner.
2. All hotels can cater for specific dietary requirements if notified in advance.
3. All hotels with capability to host guests with disabilities require advance notice to secure appropriate rooms.

Key:

✓	Amenity available at no additional cost
✓ \$	Amenity available at additional cost

✕	Amenity not available
---	-----------------------

	Sosian	Ekorians Mugie	Governors' Mugie House
Wi-fi	In central areas	In central areas	In central areas
Power points in rooms for charging	✓	In central areas	✓
Phone signal	Patchy	✓	✓
Safe in room	✕	✓	✓
Hair dryers	✕	✕	Available on request
Cots available	✓	✓	In the family cottage
Baby-sitting service	✓\$	✓\$	✓
Family rooms	✓	✓	✓
Room mini bar	✕	✕	✓
Tea & coffee maker in room	✕	✕	✓
Mosquito net	✕	✓	✓
Shower type	Normal shower	Normal shower	Normal shower
Air conditioning	✕	✕	✕
Laundry	✓	✓	✓
Day game drives	✓	✓	✓
Night game drives	✓	✓	✓
Guided walks	✓	✓	✓
Cultural visits	✓\$	✓\$	✓\$
Bush meals	✓	✓	✓\$
Sundowners in the bush	✓	✓	✓
Fly camping	✓	✓	✕
Plane / chopper excursions	✓\$	✕	✕
Fishing	✓	✓	✕
Horse / Camel safaris	Both	Camel	✕
Swimming pool	✓	✓	✓
Spa	✓\$	✕	✓\$
Gym	✕	✕	✕ (Golf Course & kayaking)
Wheelchair access	✓	✕	✓
Courtesy airstrip transfers	✓	✓	✓
Late check-out possible	✓\$	✓	✓

SAMBURU, BUFFALO SPRINGS & SHABA NATIONAL RESERVES

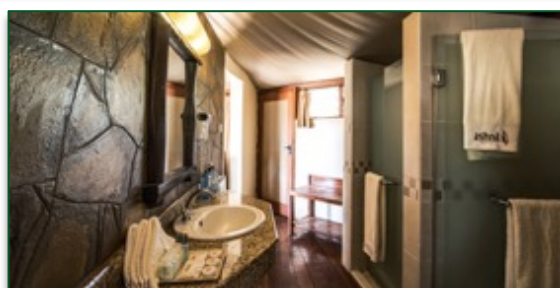
These three reserves lie 325 km (202 miles) from Nairobi and are adjacent to each other, in effect forming one 833 km² (322 miles²) semi desert reserve. It is within the lands of the Samburu, cousins of the Maasai, and contains a number of wildlife species rarely found elsewhere including Grevy's zebra, Besia oryx and the long-necked gerenuk. As the area is so arid the game is concentrated around the Ewaso Nyiro River which runs through the parks, making game viewing particularly good.

Why visit? Along with the aforementioned Grevy's zebra and gerenuk, all three big cats hunt in the reserves with a good number of leopard always present in the wooded riverbank areas.

PRICE	SIZE	Recommended No. Nights
Adult USD \$70 per day Child USD \$40 per day	190,000 acres	3

SAMBURU ACCOMMODATION

ASHNIL SAMBURU



Overview

Ashnil Samburu Camp is a luxury tented camp located on the Ewaso Nyiro River and set against the spectacular backdrop of the mighty Ololokwe mountain. It features an outdoor swimming pool surrounded by sun lounges, a garden and a Lounge bar offering views of the African savannah. Each tent features a decked terrace with views of the Ewaso Nyiro River. The restaurant offers views of the river and serves a variety of menus comprising of Oriental, traditional and international cuisines.

A range of paid activities are available on request including nature walks, cultural visit to a nearby Samburu village, helicopter excursions and meals & sundowners in the bush.

Accommodation

Accommodation consists of 30 luxury en-suite tents, spread out along the shady banks of the river. A large hotel, it can cater to over 60 guests and guests can choose doubles or twins and most tents can accommodate an additional bed for children if required.

Children

Children of all ages are welcome.

Food & Drink

Meals are included in the room rate. Drinks are not included.

Payments

For any additional activities or services not included in the room rate, Visa and Mastercard payments are accepted. Local currency and USD cash is also accepted and is required for any tips.

Power & Communications

Power is provided by generator at specific times of the day; 5am-10am, 12pm-4pm and 6pm-Midnight.

Rooms have power points to charge personal electronics, when the generator is on.

Wi-fi is available in the reception and common areas, when power is on.

There is good phone signal for local networks.

Getting there

Regular, commercial flights from Wilson Airport in Nairobi fly to Buffalo Springs Airstrip every day. The flight takes approximately 90 minutes. From the airstrip it's a 5 km / 20-minute game drive to the camp. By road, the journey from Nairobi is 285 km, approximately 6 hours.

ELEPHANT BEDROOM



Overview

This small and exclusive, luxury safari camp is located within the Samburu National Reserve right on the banks of the Ewaso Nyiro River. As the name suggests, Elephants frequent the area and often pass through the camp.

The main area consists of a pair of spacious tents that are raised on a smart wooden deck made from cypress wood. Open at the front, they have lovely views out over the river and their stylish furniture, much of which is made locally by Samburu craftsmen, is a mix of African and European styles. The dining area is set with individual tables and chairs, and the comfortable lounge area, with large chairs and a sofa, is complemented by a couple of lounging areas on the broad, open-air deck.

Accommodation

Accommodation consists of 14 tented rooms, all en-suite, spacious, comfortable and luxurious. With a capacity of 30, guests can choose from doubles or twins and tents can accommodate an additional bed for children.

Children

Children of all ages are welcome.

Food & Drink

Meals are included in the room rate. Drinks are not included.

Payments

For any additional activities or services not included in the room rate, Visa and Mastercard payments are accepted with a 5% surcharge. Local currency and USD cash is also accepted and is required for any tips.

Power & Communications

Power is provided by generator at specific times of the day; 5am-7.30am, 1pm-3pm and 6pm-11pm.

Rooms have power points to charge personal electronics, when the generator is on.

Wi-fi is available in the reception and common areas, when power is on.

There is good phone signal for local networks.

Getting there

Regular, commercial flights from Wilson Airport in Nairobi fly to Kalama Airstrip every day. The flight takes approximately 90 minutes. From the airstrip it's a 20 km / 50-minute game drive to the camp. By road, the journey from Nairobi is 340 km, approximately 6.5 hours.

SAMBURU INTREPID





Overview

Samburu Intrepids is situated on the banks of the Ewaso Nyiro River in the arid heart of Samburu National Reserve. The camp looks out over riverbanks where herds of elephant, buffalo and zebra come daily to drink – together with the rarer northern species of reticulated giraffe, Beisa oryx and long-necked gerenuk antelope.

Samburu Intrepids is renowned as a pioneer of luxury camping in one of the world's last truly great wilderness areas and guests can view this dramatic wilderness from many fascinating perspectives.

Accommodation

Samburu Intrepids Camp offers 28 modern, en-suite tents with a private view over the wildlife-rich riverbanks. Family tents are available for groups and guests can choose from double, twin or triple rooms.

Children

Children of all ages are welcome and the Adventurers Club allows children to learn interesting skills and crafts of the Samburu and Maasai people.

Food & Drink

Meals are included in the room rate. Drinks are not included.

Payments

For any additional activities or services not included in the room rate, Visa and Mastercard payments are accepted. Local currency and USD cash is also accepted and is required for any tips.

Power & Communications

Power is provided by generator at specific times of the day; 5am-3pm and 6pm-midnight.

Rooms have power points to charge personal electronics, when the generator is on.

Wi-fi is available in the reception and common areas, when power is on.

There is good phone signal for local networks.

Getting there

Regular, commercial flights from Wilson Airport in Nairobi fly to Buffalo Springs Airstrip every day. The flight takes approximately 90 minutes. From the airstrip it's a 10 km / 30-minute game drive to the camp. By road, the journey from Nairobi is 340 km, approximately 6.5 hours.

SAMBURU SARUNI



Overview

Perched atop a rocky hill, Samburu Saruni boasts incredible views of the exclusive Kalama Conservancy. An innovative, eco-design gives the lodge a fascinating feel with spaces built in and around the giant, volcanic rock it sits on. It strikes a perfect balance of luxury while being immersed in the surroundings.

Guests can enjoy a range of activities including; game drives, guided walks, a rock art walk, rock climbing, bird watching, night torch safari, watching animals from the elephant hide and meals & sundowners in the bush. Paid activities on offer include; cultural visits, hiking nearby Mt. Ololokwe and fixed wing and helicopter excursions.

Accommodation

With only six en-suite villas, this exclusive camp has a maximum capacity of 20 guests and provides exceptional, attentive service. Large villas for groups or families are available and guests can choose from double or twin rooms. Additional beds can also be added to rooms if required.

Children

Children of all ages are welcome and the Warrior Academy allows children to learn interesting skills and crafts of the Samburu and Maasai people.

Food & Drink

Meals and most drinks are included in the room rate. Champagne and luxury wines & spirits are not included.

Payments

For any additional activities or services not included in the room rate, Visa and Mastercard payments are accepted with a 4% surcharge. Local currency and USD cash is also accepted and is required for any tips.

Power & Communications

24 / 7 power is provided by solar and a back-up generator.

Rooms have power points to charge personal electronics.

Wi-fi is available in the reception and common areas.

There is patchy phone signal for local networks.

Getting there

Regular, commercial flights from Wilson Airport in Nairobi fly to Kalama Airstrip every day. The flight takes approximately 90 minutes. From the airstrip it's a 5 km / 20-minute game drive to the camp. By road, the journey from Nairobi is 350 km, approximately 6.5 hours.

SASAAB



Overview

Situated high up on the banks of the Ewaso Nyiro River, Sasaab has amazing views of the river and surrounding landscape. Guests can often enjoy watching herds of elephant bathing in the river, from the comfort of the boutique lodge. Designed in a stunning blend of Moroccan and Swahili style the luxurious lodge offers a cooling retreat from the hot African sun.

Guests can enjoy a range of activities some of which include; game drives, guided walks, bird watching and meals & sundowners in the bush. Paid activities on offer include; cultural visits, quad biking excursions, fishing, fly camping and fixed wing and helicopter excursions.

Accommodation

The lodge is made up of nine, airy rooms with four poster beds, enormous, open-air bathrooms and private plunge pools. For groups, a family suite is available with an exclusive shared space and separate access. Guests can choose from double or twin rooms and additional beds can also be added to rooms if required.

Children

Children of all ages are welcome.

Food & Drink

Meals and most drinks are included in the room rate. Champagne and luxury wines & spirits are not included.

Payments

For any additional activities or services not included in the room rate, Visa and Mastercard payments are accepted with a 5% surcharge. Local currency and USD cash is also accepted and is required for any tips.

Power & Communications

24 / 7 power is provided by solar and a back-up generator.

Rooms have power points to charge personal electronics.

Wi-fi is available in the reception and common areas.

There is limited phone signal in the area.

Getting there

Regular, commercial flights from Wilson Airport in Nairobi fly to Oryx Airstrip every day. The flight takes approximately 90 minutes. From the airstrip it's a 35 km / 90-minute game drive to the camp. Chartered flights can land at the lodge's private airstrip which is a 2 km / 10 min drive to the lodge. By road, the journey from Nairobi is 360 km, approximately 7.5 hours.

SAMBURU ACCOMMODATION INFO & AMENITIES

Notes:

1. All hotel rooms have; en-suite bathrooms, flush toilets and provide shampoo & conditioner.
2. All hotels can cater for specific dietary requirements if notified in advance.
3. All hotels with capability to host guests with disabilities require advance notice to secure appropriate rooms.

Key:

✓	Amenity available at no additional cost
✓ \$	Amenity available at additional cost
✗	Amenity not available

	Ashnil Samburu	Elephant Bedroom	Samburu Intrepids	Samburu	Sasaab
Wi-fi	In central areas	In central areas	In central areas	In central areas	In central areas
Power points in rooms for charging	✓	✓	✓	✓	✓
Phone signal	✓	✓	✓	Patchy	Limited
Safe in room	✓	✓	In reception	✓	✓
Hair dryers	✓	✓	✓	✓	✓
Cots available	✓	✓	✓	✓	✓
Baby-sitting service	✓ \$	✗	✓ \$	✓ \$	✗
Family rooms	✗	✗	✓	✓	✓
Room mini bar	✗	✗	✗	✗	✓
Tea & coffee maker in room	✓	✗	✗	✓	✓
Mosquito net	✗	✓	✓	✓	✓

Shower type	Normal shower	Normal shower	Normal shower	Normal shower	Normal shower
Air conditioning	Fan	✗	✓	Fan	✗
Laundry	✓\$	✓\$	✓\$	✓	✓
Day game drives	✓\$	✓\$	✓\$	✓	✓
Night game drives	✗	✗	✗	✓	✓
Guided walks	✓\$	✓\$	✓\$	✓	✓
Cultural visits	✓\$	✓\$	✓\$	✓\$	✓\$
Bush meals	✓\$	✓\$	✓\$	✓	✓\$
Sundowners in the bush	✓\$	✓\$	✓\$	✓	✓\$
Fly camping	✗	✗	✗	✗	✓\$
Plane / chopper excursions	✓\$	✗	✓\$	✓\$	✓\$
Fishing	✗	✗	✗	✗	✓\$
Horse / Camel safaris	✗	✓\$	✓\$	✗	✓\$
Swimming pool	✓	✓	✓	✓	✓
Spa	✓\$	✓\$	✗	✓\$	✓\$
Gym	✗	✗	✗	✗	✓
Wheelchair access	✓	✓	✗	✓	✗
Courtesy airstrip transfers	✗	✗	✗	✓	✓
Late check-out possible	✗	✓\$	✓\$	✓\$	✗

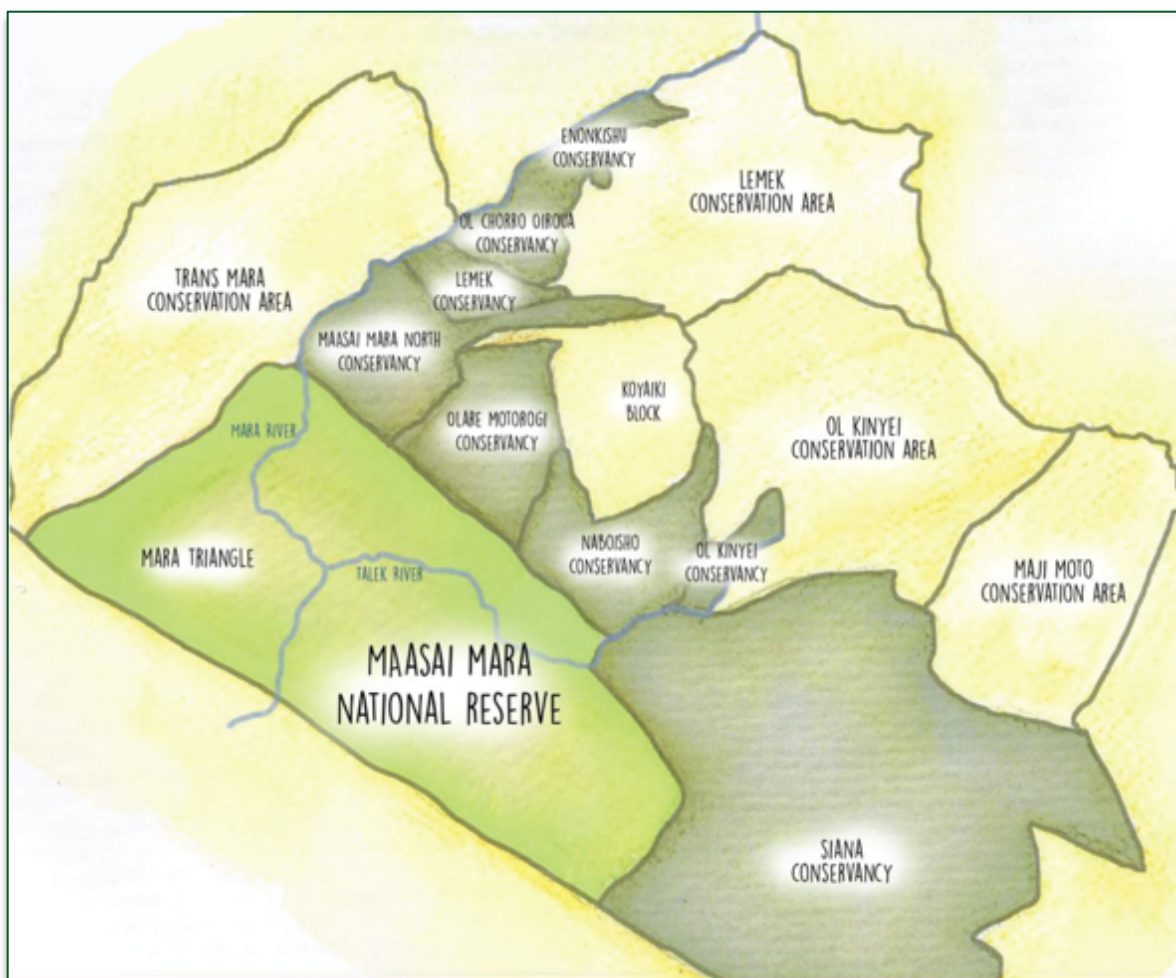
MAASAI MARA GAME RESERVE

The jewel in the crown of Kenyan parks and reserves, the Masai Mara (373,000 acres / 1,500km²) lies 275km (170miles) west of Nairobi and is part of the vast Mara-Serengeti ecosystem, split across Kenya and Tanzania. A huge variety of plains game is food for every type of predator and scores of hippo and crocodile living in the Mara River. The Mara is rich in resident game with over 95 species recorded and a plentiful range of over 480 species of bird life. It is generally considered to be the highlight of a Kenyan safari.

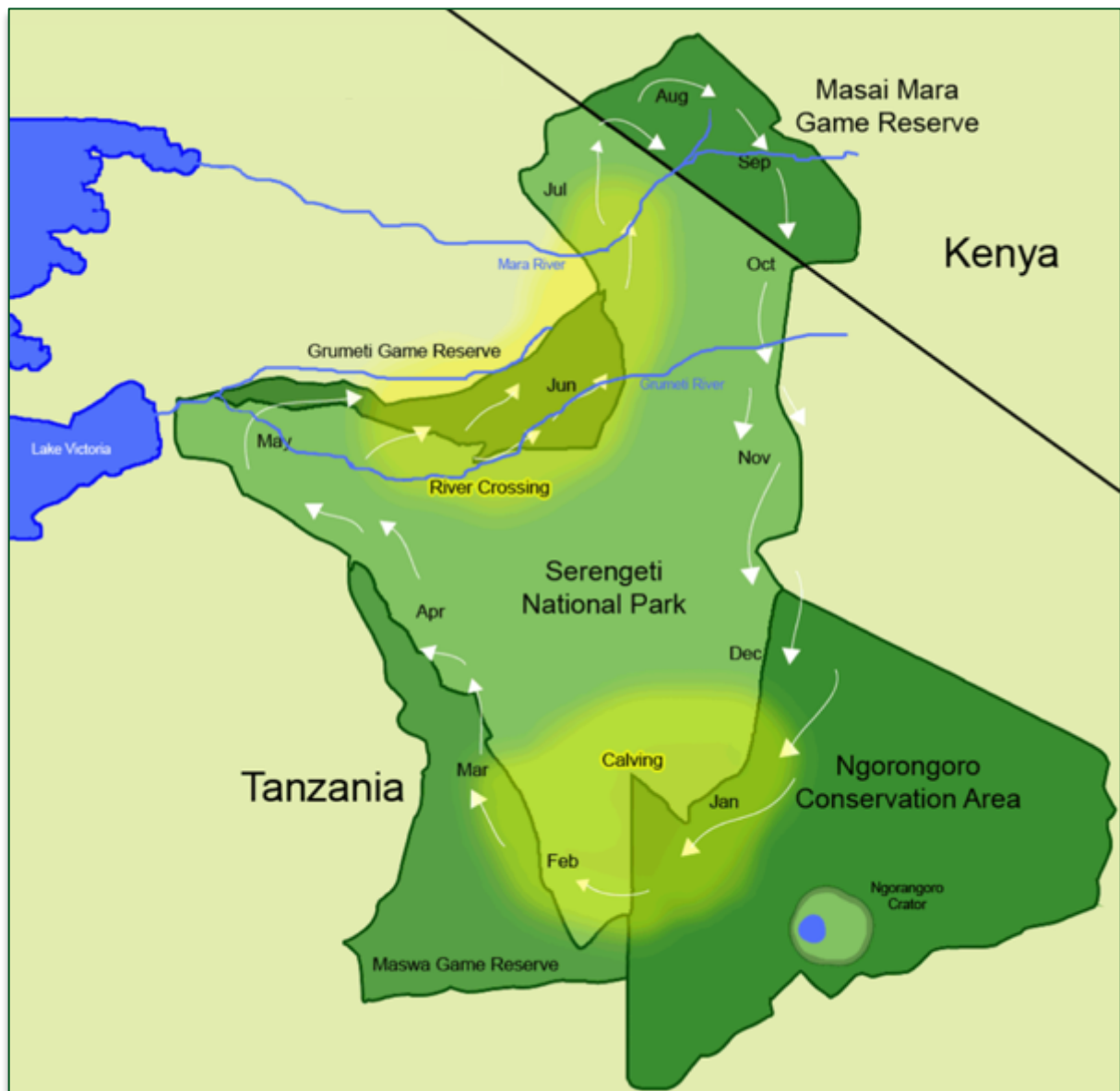
The Mara is also home to the annual migration of over a million wildebeest and zebra which come into the Mara between August and September before heading back into Tanzania. The reserve lies within the territory of the Maasai, who help administer the park and protect it from poachers.

Why visit? The Masai Mara is world renowned for its exceptional populations of lion, leopard, cheetah and elephant. While no sightings in the wild can be guaranteed, there is a good chance of seeing these species here. Then of course there's the migration in August/September, which is considered one of the seven new wonders of the world. The opportunity to take a magical hot air balloon ride over the Mara plains would be a highlight of any African adventure.

THE MASAI MARA RESERVES AND CONSERVANCIES



THE MARA-SERENGETI GREAT MIGRATION



HOT AIR BALLOONING OVER THE MAASAI MARA

Why not experience the ultimate freedom of drifting above the African plains in the most serene way possible? A hot air balloon ride is pure luxury, giving you a 360-degree vista over one of the world's most magnificent natural landscapes – Kenya's great wilderness, the Masai Mara. The sensation of drifting in an open basket with this unique aerial perspective over this classic savannah landscape is an unparalleled thrill but this aerial adventure is also amazingly peaceful, thanks to the silent, soothing motion. You'll start at dawn and witness the magic of the African sunrise from the sky and then enjoy the added indulgence of a champagne breakfast when you settle back to solid ground.

PRICE

Adult USD \$80 per day
Child USD \$45 per day

SIZE

373,000 acres

Recommended No. Nights

3

MAASAI MARA ACCOMMODATION

Mara North Conservancy

Ngare Serian



Overview

Situated in its own 'Ngare' translates 4,000-acre conservancy hugs the bank of the Mara River. 'Ngare' translates to 'by the river' in the Maasai language. Adding to its charm and exclusivity, the final 50m to get to the camp can only be reached by foot, over a narrow rope bridge.

With only four tents, this boutique camp offers guests exclusive vehicle and guide during their stay. A common area dining and lounge tent overlooking the river is used for meals and afternoon drinks. Comfy sofas and armchairs give a relaxed, homely feel to the camp. Subject to availability, guests can enjoy a night in 'The Nest Treehouse', a comfortable, elevated fly camp close to the main camp, at no extra charge.

Accommodation

The four guest tents are referred to as marquees, which aptly suggest their size and appeal. Sprawled along the riverside, widely spaced apart, guests can enjoy views of the river in perfect privacy. The tents are stylishly furnished and all have four-poster beds with full mosquito nets, armchairs and tables, oriental rugs and spacious, en-suite bathrooms with bath tubs. The lodge is made up of nine, airy rooms with four poster beds, enormous, open-air bathrooms and private plunge pools. Guests can choose from double or twin rooms and additional beds can also be added to rooms if required.

Children

Children of all ages are welcome.

Food & Drink

Meals and drinks are included in the room rate. Only champagne is not included.

Payments

Credit cards are not accepted however local currency, USD, Pound Sterling or Euros can be used for any extras.

Power & Communications

24 / 7 power is provided by solar & back-up generator.

Rooms have power points to charge personal electronics.

There is no Wi-fi, however internet access is available for emergencies.

There is limited phone signal in the area.

Getting there

Regular, commercial flights from Wilson Airport in Nairobi fly to Mara North Airstrip every day. The flight takes approximately 60 minutes. From the airstrip it's a 30 km / 60-minute game drive to the camp. By road, the journey from Nairobi is 260 km, approximately 6.5 hours.

Kicheche Mara North Camp



Overview

Kicheche Mara Camp is a classic tented camp hidden in a beautiful valley in a prime wildlife area of the Mara North Conservancy. The luxury tents are laid out alongside a seasonal stream from where guests can observe the resident birdlife and plains game beyond. The location is ideal as game is regularly seen near the camp itself and there is prime wildlife habitat on all sides providing an ideal base for your safari in the Masai Mara.

Accommodation

The camp has eight en-suite tents with views of the surrounding woodland. A family suite is available with two separate, en-suite bedrooms. Guests can also choose spacious, triple or quad tents, making Kicheche Mara great for families or groups of friends.

Children

Children of all ages are welcome however we recommend children 12 years and older as the camp is unfenced. Guided walks are also restricted to children 12 and above.

Food & Drink

Meals and drinks are included in the room rate. Champagne and luxury spirits & wines are not included.

Payments

Visa & Mastercard are accepted. Local currency and USD cash is also accepted and required for tips.

Power & Communications

24 / 7 power is provided by solar power.

Rooms have power points to charge personal electronics.

There is Wi-fi in the central, common area tent.

There is limited phone signal in the area.

Getting there

Regular, commercial flights from Wilson Airport in Nairobi fly to Mara North Airstrip every day. The flight takes approximately 60 minutes. From the airstrip it's a 6 km / 15-minute game drive to the camp. By road, the journey from Nairobi is 230 km, approximately 5.5 hours.

Spekes



Overview

Situated between the Olare Motorogi and Mara North Conservancies, Speke's has access to both conservancies as well as the Mara Reserve, where most game drives take place. Nestled in a thicket of trees and spread along the Olare Orok River, this camp gives guests the feeling of a luxurious hunting camp from Out of Africa.

A spacious, open-walled lounge and bar area provides a space for guests to relax in comfy sofas, enjoy the sounds of the bush and read a book from the camp library. Delicious open-air breakfast is enjoyed on the nearby lawn while evening meals are hosted in a separate dining tent with elegantly dressed tables. A separate lounge and 'Wi-fi' tent on the river bank provides another quiet space for guests to relax and enjoy. Delightful home-made food, the open bar, friendly hosts and lack of a set schedule add to the homely feel and guests can dictate exactly how they'd like to enjoy their time at the camp.

Accommodation

The camp's nine, cosy canvas tents are spread along the river's edge, with two positioned closer to each other for families or groups. The tents all have comfortable beds, a writing desk, lounge area, veranda, tea and coffee station, changing and wardrobe area and a spacious bathroom. The bathrooms feature a flush toilet and separate double vanity sinks with water provided in jugs. Warm water is supplied in the mornings and evenings. The room attendant also supplies water for the large hot water bucket shower which guests can request as and when they like. Guests can choose twin or double beds and some rooms can accommodate an additional bed.

Children

Children of all ages are welcome.

Food & Drink

Meals and drinks are included in the room rate. Only champagne and specialist wines and spirits are not, but can be purchased at additional cost.

Payments

For any extras, local currency and USD cash can be used and is required for tips. Credit cards are not accepted.

Power & Communications

24 / 7 power is supplied by solar and back-up generator.

Rooms have power points to charge personal electronics.

There is Wi-fi available in the 'W-fi tent'.

There is good phone signal for local networks.

Getting there

Regular, commercial flights from Wilson Airport in Nairobi fly to Musiara Airstrip every day. The flight takes approximately 60 minutes. From the airstrip it's a 10 km / 30-minute game drive to the camp. By road, the journey from Nairobi is 250 km, approximately 6 hours.

MARA NORTH CONSERVANCY ACCOMMODATION INFO & AMENITIES

Notes:

1. All hotel rooms have; en-suite bathrooms, flush toilets and provide shampoo & conditioner.
2. All hotels can cater for specific dietary requirements if notified in advance.
3. All hotels with capability to host guests with disabilities require advance notice to secure appropriate rooms.

Key:

✓	Amenity available at no additional cost
✓ \$	Amenity available at additional cost
✗	Amenity not available

	Ngare Serian	Kicheche Mara North Camp	Spekes Camp
Wi-fi	✗	In central areas	In Wi-fi tent
Power points in rooms for charging	✓	✓	✓
Phone signal	✓	Patchy	✓
Safe in room	In central office	In reception	✓
Hair dryers	✗	✗	✗
Cots available	✓	✗	✓
Baby-sitting service	✓\$	✗	✗
Family rooms	✗	✓	Two separate tents close together
Room mini bar	✗	✗	✗
Tea & coffee maker in room	✗	✗	✓
Mosquito net	✓	✗	✗
Shower type	Normal shower	Normal shower	Hot safari bucket shower
Air conditioning	✗	✗	✗
Laundry	✓	✓	✓
Day game drives	✓	✓	✓
Night game drives	✓	✓	✗
Guided walks	✓	✓	✓
Cultural visits	✓\$	✓\$	✗
Bush meals	✓	✓	✓
Sundowners in the bush	✓	✓	✓
Fly camping	✓	✓\$	✗
Hot air balloon	✓\$	✓\$	✓\$
Fishing	✓	✗	✗
Horse / Camel safaris	✗	✗	✗
Swimming pool	✗	✗	✗
Spa	✗	✗	✗
Gym	Bush fitness	✗	✗
Wheelchair access	✗	✗	✓
Courtesy airstrip transfers	✓	✓	✓
Late check-out possible	✓\$	✓\$	✓\$

Olare Motorogi Conservancy (Formerly Olare Orok Conservancy)

Mara Plains Camp



Overview

Mara Plains Camp hides in the thick forest on a bend in the Ntiakitiak River. It lies inside the 35,000-acre Olare Motorogi Conservancy, bordering the Masai Mara Reserve. As you arrive at the camp, you cross a bridge and climb a few giant steps to be greeted by an endless horizon with a single, flat-topped acacia, the quintessential shape of East Africa.

The design and decor pay homage to the essence of East Africa; Swahili heritage is reflected in large wooden doors from the island of Lamu, and accents of red honour the great Maasai chiefs and warriors. With the rich leathers, copper and brass used in campaign-style furniture, you have a lavish yet comfortable atmosphere that complements, rather than overwhelms the surrounding wilderness.

Accommodation

The camp can accommodate 14 guests sharing in seven, very large tents. Each tent is raised off the ground, on decks made from old railway sleepers. Rooms are decorated with stylish rugs and large comfortable beds, facing the plains below. The tents are able to open up on the sides to provide a special experience of sleeping in the bush. En-suite bathrooms are fitted with double wash basins, flush toilet, large plumbed shower and deep stand-alone bath. Family and honeymoon tents are available with their own lounge and dining areas. Guests can choose from twin or double tents and some rooms can accommodate an additional bed.

Children

Children aged eight years and older are welcome.

Food & Drink

Meals and drinks are included in the room rate. Only champagne is not, but can be purchased at additional cost.

Payments

Visa & Mastercard are accepted for any extras., with a 3.5% surcharge. Local currency and USD cash is also accepted and required for tips.

Power & Communications

24 / 7 power is supplied by solar and back-up generator.

Rooms have power points to charge personal electronics.

There is Wi-fi throughout the camp.

There is patchy phone signal at the camp for local networks.

Getting there

Regular, commercial flights from Wilson Airport in Nairobi fly to Olare Orok Airstrip every day. The flight takes approximately 60 minutes. From the airstrip it's a 5 km / 15-minute game drive to the camp. By road, the journey from Nairobi is 280 km, approximately 7 hours.

Kicheche Bush Camp



Overview

Kicheche Bush Camp is located in a superb wildlife area in Olare Motorogi Conservancy bordering the Masai Mara Reserve. The game viewing is first class and the exclusivity of the Conservancy ensures a high-quality African safari and Kenya holiday experience with low density tourism. The camp itself is small meaning guests can enjoy privacy and personal service. An elegant common area is used for relaxing, afternoon tea and meals. A relaxed atmosphere prevails and guests can mix with other guests and the hosts at meals and around the fire.

The perfect hideaway, Kicheche Bush camp has attracted scores of professional photographers who trust the Kicheche approach to a day on safari. That has created an exciting environment where any amateur photographer can raise their game and capture the sorts of images that inspired them in the first place.

Accommodation

Six identical tents can host a total of 13 guests sharing. Grand in size, the tents have a comfortable lounge with chairs and coffee table for morning and afternoon tea. Bathrooms are fitted out with a basin, flush toilet and a hot safari bucket shower which your tent attendant will prepare, on demand. Rooms can be set up as twins or doubles and can accommodate an additional bed.

Children

Children of all ages are welcome however the camp is better suited for adults with few activities to entertain smaller children. We suggest that only children older than eight years would enjoy the camp.

Food & Drink

Meals and drinks are included in the room rate. Champagne and luxury spirits and wines are not, but can be purchased at additional cost.

Payments

Visa & Mastercard are accepted for any extras., with a 5% surcharge. Local currency and USD cash is also accepted and required for tips.

Power & Communications

24 / 7 power is supplied by solar and back-up generator.

Rooms have power points to charge personal electronics.

There is Wi-fi in the common areas.

There is patchy phone signal at the camp for local networks.

Getting there

Regular, commercial flights from Wilson Airport in Nairobi fly to Olare Orok Airstrip every day. The flight takes approximately 60 minutes. From the airstrip it's a 5 km / 15-minute game drive to the camp. By road, the journey from Nairobi is 220 km, approximately 5 hours.

OLARE MOTOROGI CONSERVANCY ACCOMMODATION INFO & AMENITIES

Notes:

1. All hotel rooms have; en-suite bathrooms, flush toilets and provide shampoo & conditioner.
2. All hotels can cater for specific dietary requirements if notified in advance.
3. All hotels with capability to host guests with disabilities require advance notice to secure appropriate rooms.

Key:

✓	Amenity available at no additional cost
✓ \$	Amenity available at additional cost
✗	Amenity not available

	Mara Plains Camp	Kicheche Bush Camp
Wi-fi	✓	In central tent
Power points in rooms for charging	✓	✓
Phone signal	Patchy	Patchy

Safe in room	✓	In reception
Hair dryers	✓	✗
Cots available	✗	✗
Baby-sitting service	✗	✗
Family rooms	✓	✗
Room mini bar	✗	✗
Tea & coffee maker in room	✓	✗
Mosquito net	✗	✗
Shower type	Normal shower	Hot safari bucket shower
Air conditioning	Fan	✗
Laundry	✓	✓
Day game drives	✓	✓
Night game drives	✓	✓
Guided walks	✗	✓
Cultural visits	✓\$	✓\$
Bush meals	✓	✓
Sundowners in the bush	✓	✗
Fly camping	✗	✓\$
Hot air balloon	✓\$	✓\$
Fishing	✗	✗
Horse / Camel safaris	✗	✗
Swimming pool	✗	✗
Spa	✗	✗
Gym	✗	✗
Wheelchair access	✗	✗
Airstrip transfers	✓	✓
Late check-out possible	✓\$	✓\$

Masai Mara Reserve (West)

Mara Intrepids



Overview

Overlooking the Talek River, at the very confluence of the Mara's four game-viewing areas, Mara Intrepids Camp enjoys one of the most spectacular locations in the world's best-known wilderness. Modern and comfortable the camp also offers exceptional service and food. Guests can choose between meals at the camp or out in the bush, under the stars and within sight of wildlife. Similarly, sundowners in the bar are an excellent way to end the day, toasting the Mara's incredible wildlife diversity.

Accommodation

The camp has 30 en-suite tents. Guests can choose between single, double, twin or triple tents. All en-suite, the tents are stylishly fitted out with comfortable four poster beds with mosquito nets and private balcony decks. Family tents are available for groups or families travelling together.

Children

Children of all ages are welcome.

Food & Drink

Meals are included in the room rate. Drinks are not included but can be purchased at additional cost.

Payments

Visa & Mastercard are accepted for extras. Local currency and USD cash is also accepted and required for tips.

Power & Communications

24 / 7 power is supplied by generator.

Rooms have power points to charge personal electronics.

There is Wi-fi throughout the camp.

There is good phone signal at the camp for local networks.

Getting there

Regular, commercial flights from Wilson Airport in Nairobi fly to Ol Kiombo Airstrip every day. The flight takes approximately 60 minutes. From the airstrip it's a 1 km / 5-minute game drive to the camp. By road, the journey from Nairobi is 260 km, approximately 6.5 hours.

Rekero Camp



Overview

Perched above a particularly beautiful stretch of the Talek River, Rekero is strategically positioned for guests to watch wildebeest thunder across the river during the Great Migration, from the comfort of the lodge. For the rest of the year, the location offers sweeping views of the surrounding plains and animals can regularly be seen drinking from the river.

Accommodation

Accommodation consists of nine spacious tents, including 2 family tents. All tents are en-suite and have a large private veranda with inviting day bed or couch for guests to sit and take in views of the river below. Double or twin rooms are available and additional beds can be added to rooms if required.

Children

Children aged five years and older are welcome.

Food & Drink

Meals and drinks are included in the room rate. Champagne and luxury spirits & wines are not included.

Payments

Visa & Mastercard are accepted for any extras, with a 4% surcharge. Local currency and USD cash is also accepted and required for tips.

Power & Communications

24 / 7 power is supplied by solar and back-up generator.

Rooms have power points to charge personal electronics.

There is Wi-fi in the central tent.

There is good phone signal at the camp for local networks.

Getting there

Regular, commercial flights from Wilson Airport in Nairobi fly to Ol Kiombo Airstrip every day. The flight takes approximately 60 minutes. From the airstrip it's a 10 km / 20-minute game drive to the camp. By road, the journey from Nairobi is 260 km, approximately 6.5 hours.

Note: Rekero Camp is closed April and May

Ashnil Mara



Overview

Overlooking the Mara River, Ashnil Mara has an excellent position for game viewing with guests able to spot animals from the comfort of the lodge. With 56 tents, Ashnil is one of the larger Mara camps and offers guest a wide range of facilities including swimming pool, restaurant with a diverse menu and spa. A dining and lounge area on the river's edge are where daily meals, afternoon tea & coffee and evening drinks are served.

Accommodation

Accommodation consists of 56 spacious, en-suite tents. Guests can choose from twin, double, or triple rooms with tents for families also available. Beautifully designed, all tents have four poster beds with mosquito nets and spacious bathrooms.

Children

Children of all ages are welcome.

Food & Drink

Meals are included in the room rate. Drinks are not included but can be purchased at additional cost.

Payments

Visa & Mastercard are accepted for extras. Local currency and USD cash is also accepted and required for tips.

Power & Communications

Power is supplied by generator and is available at 5am-10am, 12pm-4pm and 6pm-midnight.

Rooms have power points to charge personal electronics, during times of power as above.

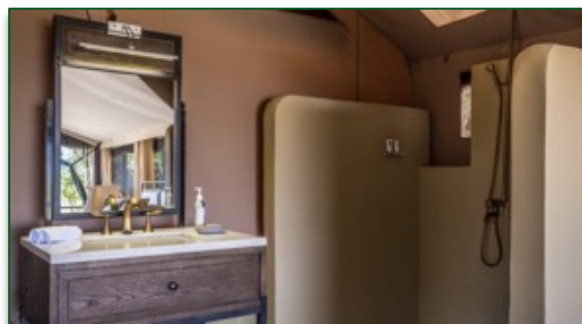
There is Wi-fi in the central dining and lounge tent, during times of power as above.

There is good phone signal at the camp for local networks.

Getting there

Regular, commercial flights from Wilson Airport in Nairobi fly to Ol Kiombo Airstrip every day. The flight takes approximately 60 minutes. From the airstrip it's a 15 km / 45-minute game drive to the camp. By road, the journey from Nairobi is 270 km, approximately 6.5 hours.

Entim



Overview

Entim has been designed to give guests the friendliest, most intimate, luxurious safari experience in the Mara. Overlooking the Mara River, guests can enjoy the great migration from the comfort of the camp or their rooms. An open sided dining area is where delicious, daily meals are served. A beautifully designed lounge with comfy leather sofas and armchairs offers guests an area to relax and enjoy some quiet time.

Accommodation

Accommodation is made up of 12 new, luxury en-suite room tents. Raised on wooden decks overlooking the rivers, they are handsomely decorated using earthy tones. All tents have spacious and beautifully designed bathrooms as well as a private lounge and veranda for guests to relax and watch wildlife from. While Entim

doesn't have a specific family suite, Guests can choose from double or twin rooms additional beds can be added to rooms if required.

Children

Children aged eight years and older are welcome.

Food & Drink

Meals and drinks are included in the room rate. Champagne and luxury spirits & wines are not, but can be purchased at additional cost.

Payments

Visa & Mastercard are accepted for extras. Local currency and USD cash is also accepted and required for tips.

Power & Communications

Power is supplied by solar and back-up generator and is available at 4am-8am, 11pm-4pm and 6pm-10pm.

Rooms have power points to charge personal electronics, during times of power as above.

There is Wi-fi in common areas, during times of power as above.

There is good phone signal at the camp for local networks.

Getting there

Regular, commercial flights from Wilson Airport in Nairobi fly to Ol Kiombo Airstrip every day. The flight takes approximately 60 minutes. From the airstrip it's a 15 km / 40-minute game drive to the camp. By road, the journey from Nairobi is 280 km, approximately 7 hours.

Mara Expedition



Overview

The camp is located on a bend in the Ntiakitiak River, hidden from everyone, but with access to the endless savannas of the Masai Mara. It is a place where lions own the night, hippos stake their claim to territories and

where leopards cough their haunting calls in the forest. Raised off the ground for minimal environmental impact, this is the perfect hideout for this small, intimate camp, constructed with deference to the wilderness that surrounds it. The design draws stylistic reference from the old, authentic expedition camps of a bygone era and is the perfect blend of comfort and adventure. Food is taken seriously at Entim and guests can expect delightful meals. Fully inclusive, guests are made to feel at home and can enjoy champagne and local & imported wines and spirits as part of their rooms rate.

Accommodation

Accommodation is made up of five elegantly designed rooms. All rooms are en-suite with spacious bathrooms and private veranda. Showers are safari bucket showers, prepared with warm water on request. Guests can choose from double or twin rooms.

Children

Children aged eight years and older are welcome.

Food & Drink

All meals and drinks are included in the room rate.

Payments

Visa & Mastercard are accepted for any extras, with a 3.5% surcharge. Local currency and USD cash is also accepted and required for tips.

Power & Communications

24 / 7 power is supplied by solar and back-up generator.

Rooms have power points to charge personal electronics.

Wi-fi is available throughout the camp.

There is patchy phone signal at the camp for local networks.

Getting there

Regular, commercial flights from Wilson Airport in Nairobi fly to Ol Kiombo Airstrip every day. The flight takes approximately 60 minutes. From the airstrip it's a 15 km / 45-minute game drive to the camp. By road, the journey from Nairobi is 280 km, approximately 7 hours.

Naibor (Main, Little & Wilderness)



Overview

Naibor Camp is made up of three separate but interlinked tented camps – Main, Little and Wilderness. All nestled in a small stretch of forest along the Talek River, each camp offers guests a slightly different level of luxury and comfort. All three camps share the same common area which consist of a spa and large lounge and dining tent, where beautiful and delicious meals made from fresh ingredients are served. Guests can enjoy meals in the dining area or by their own tent as a private, candle-lit meal.

Accommodation

Main Naibor has a total of seven luxury tents all en-suite with open-sided veranda and day bed, overlooking the river.

Little Naibor has two bigger, luxury suites for families and groups. Each tent has two en-suite bedrooms (a twin and a double), either side of a stylish living room area, complete with large sofa, coffee table and lounge chairs.

Naibor Wilderness has three classic tents. The same size as the Main Naibor tents they offer simpler furnishing, offering a lower-cost option for guests. Each is en-suite and has a veranda with table and chairs.

Reminiscent of luxurious safari and hunting lodges from a bygone era, all tents have flush toilets but don't have running water for wash basins and showers. Jugs of clean washing water are provided for wash basins with hot water supplied in the mornings and evenings. A hot safari shower can be prepared on demand, by the tent attendant who fills a safari bucket shower outside your tent with water at the perfect temperature. The shower is then controlled by the guest inside in total privacy.

Children

The camp must be contacted for permission for children 7 years and younger to stay.

Food & Drink

Meals and drinks are included in the room rate. Champagne and luxury spirits & wines are not, but can be purchased at additional cost.

Payments

Visa & Mastercard are accepted for any extras, with a 5% surcharge. Local currency and USD cash is also accepted and required for tips.

Power & Communications

24 / 7 power is supplied by solar and back-up generator.

Rooms have power points to charge personal electronics.

Wi-fi is available in the common areas.

There is patchy phone signal at the camp for local networks.

Getting there

Regular, commercial flights from Wilson Airport in Nairobi fly to Ol Kiombo Airstrip every day. The flight takes approximately 60 minutes. From the airstrip it's a 15 km / 30-minute game drive to the camp. By road, the journey from Nairobi is 270 km, approximately 6.5 hours.

MASAI MARA RESERVE (WEST) ACCOMMODATION INFO & AMENITIES

Notes:

1. All hotel rooms have; en-suite bathrooms, flush toilets and provide shampoo & conditioner.
2. All hotels can cater for specific dietary requirements if notified in advance.
3. All hotels with capability to host guests with disabilities require advance notice to secure appropriate rooms.

Key:

✓	Amenity available at no additional cost
✓ \$	Amenity available at additional cost
✗	Amenity not available

	Mara Intrepids	Rekero Camp	Ashnil	Entim	Mara Expedition	Naibor Camps
Wi-fi	✓	In central areas	In central areas	In central areas	✓	In central areas
Power points in rooms for charging	✓	✓	✓	✓	✓	✓
Phone signal	✓	✓	✓	✓	Patchy	Patchy
Safe in room	In central office	In central office	✓	✓	✓	n central office
Hair dryers	✓	✗	✓	✓	✓	✗
Cots available	✓	✗	✓	✗	✗	✗
Baby-sitting service	✓ \$	✗	✓ \$	✗	✗	✗
Family rooms	✓	✓	✓	✗	✗	✓
Room mini bar	✗	✗	✗	✗	✗	✗

Tea & coffee maker in room	✗	✗	✓	✗	✓	✗
Mosquito net	✓	✗	✗	✗	✗	✗
Shower type	Normal shower	Normal shower	Normal shower	Normal shower	Safari bucket shower	Safari bucket shower
Air conditioning	✗	✗	Fan	Fan	Fan	✗
Laundry	✓\$	✓	✓\$	✓	✓	✓
Day game drives	✓\$	✓	✓	✓	✓	✓
Guided walks	✓\$	✗	✓\$	✓	✗	✗
Cultural visits	✓\$	✓\$	✓\$	✓\$	✓\$	✓\$
Bush meals	✓\$	✓	✓\$	✓\$	✗	✓
Sundowners in the bush	✓\$	✓	✓\$	✓\$	✗	✓
Fly camping	✗	✗	✗	✗	✗	✗
Hot air balloon	✓\$	✓\$	✓\$	✓\$	✓\$	✓\$
Fishing	✗	✗	✗	✗	✗	✗
Horse / Camel safaris	✗	✗	✗	✗	✗	✗
Swimming pool	✓	✗	✓	✗	✗	✗
Spa	✗	✗	✓\$	✓\$	✗	✓\$
Gym	✗	✗	✗	✗	✗	✗
Wheelchair access	✓	✗	✓	✗	✗	✗
Airstrip transfers	✓\$	✓	✓\$	✓\$	✓	✓\$
Late check-out possible	✓\$	✓\$	✓	✓\$	✓\$	✓\$

Masai Mara Reserve (South East)

Ilkeliani



Overview

Nestled in a river glade in the Masai Mara Game Reserve, the area is a favorite for elephants coming to drink from the Talek River. The camp has been designed to combine the old traditional safari style with a modern and fresh feel. It is a permanent camp designed along ecofriendly principles. The ethos is to leave a minimum foot print on nature. Home cooked meals combined with personal service contribute to an unforgettable safari experience.

Accommodation

The camp consists of 12 en-suite tents, each with commanding views of the plains and the wildlife throughout the day. Spacious and comfortable, each has its own verandah with daybed and canvas safari chairs. Guests can choose from twins or doubles and some tents can accommodate a third bed. A family suite which consists of two tents in close proximity is available for families and groups.

Children

Children of all ages are welcome.

Food & Drink

Meals are included in the room rate. Drinks are not, but can be purchased at additional cost.

Payments

Visa & Mastercard are accepted for extras. Local currency and USD cash is also accepted and required for tips.

Power & Communications

Power is supplied by solar and back-up generator and is available at 9am-4pm and 6pm-11pm.

Rooms have power points to charge personal electronics, during times of power as above.

There is Wi-fi in common areas, during times of power as above.

There is patchy phone signal at the camp for local networks.

Getting there

Regular, commercial flights from Wilson Airport in Nairobi fly to Ol Kiombo Airstrip every day. The flight takes approximately 60 minutes. From the airstrip it's a 10 km / 25-minute game drive to the camp. By road, the journey from Nairobi is 240 km, approximately 5.5 hours.

Sand River Camp



Overview

Situated on a secluded and picturesque site, Sand River Masai Mara replicates the heyday of exclusive permanent tented camps of the late 1920's. The interior fixtures and furnishings mirror this period, reminding all who visit of those countless Hollywood movies that have paid homage to a classic era of African adventure.

Sand River has sixteen tents which are divided into two separate but adjoining campsites, each with its own designated dining and public areas, thereby creating an increased sense of exclusivity and privacy.

Accommodation

16 en-suite tents, including one family tent can accommodate 34 guests in total. All tents are en-suite and are spread out along the bank of the Sand River. Each has a separate lounge with sofa, armchair and writing desk. Bathrooms have freestanding copper baths as well as a separate outdoor shower. Guests can choose from twins or doubles and some rooms have a sofa bed for an additional bed.

Children

Children of all ages are welcome.

Food & Drink

Meals and drinks are included in the room rate. Champagne and luxury spirits & wines are not, but can be purchased at additional cost.

Payments

Visa & Mastercard are accepted for extras. Local currency and USD cash is also accepted and required for tips.

Power & Communications

24 / 7 power is supplied by solar and back-up generator.

Rooms have power points to charge personal electronics.

There is Wi-fi throughout the camp.

There is phone signal at the camp for local networks.

Getting there

Regular, commercial flights from Wilson Airport in Nairobi fly to Keekorok Airstrip every day. The flight takes approximately 60 minutes. From the airstrip it's a 17 km / 45-minute game drive to the camp. By road, the journey from Nairobi is 245 km, approximately 5.5 hours.

Mara Explorer



Overview

Mara Explorer is situated on a broad, thickly forested bend of the Talek River, in the very heart of the Maasai Mara National Reserve. This luxurious five-star camp lies at the confluence of the Masai Mara's four main game-viewing areas and enjoys prime views of the spectacular Great Migration. During the rest of the year, guests can witness herds of watering elephant, hippo and other animals from the comfort of the camp and tents.

Accommodation

10 stunning en-suite tents all face the river with their own private balcony. All tents have irresistibly comfortable, handmade beds, outdoor Victorian claw-bath tubs and can open up on all sides for total immersion in nature. Guests can choose from single, twin or double tents and some rooms can accommodate an additional bed.

Children

Children must be 12 years and older to stay.

Food & Drink

Meals and drinks are included in the room rate. Champagne and luxury spirits & wines are not, but can be purchased at additional cost.

Payments

Visa & Mastercard are accepted for extras. Local currency and USD cash is also accepted and required for tips.

Power & Communications

Power is supplied by generator and is available from 5am-3pm and 6pm-midnight.

Rooms have power points to charge personal electronics, during hours of power.

There is Wi-fi throughout the camp, during hours of power.

There is good phone signal at the camp for local networks.

Getting there

Regular, commercial flights from Wilson Airport in Nairobi fly to Ol Kiombo Airstrip every day. The flight takes approximately 60 minutes. From the airstrip it's a 1 km / 5-minute game drive to the camp. By road, the journey from Nairobi is 260 km, approximately 6.5 hours.

Sala's Camp



Overview

Sala's Camp is situated in the southern, wilder corner of Kenya's mighty Masai Mara, close to the confluence of the Sand and Keekorok Rivers - an idyllic geographical feature that attracts teeming wildlife. Sala's Camp

location is a big draw, close to Tanzania with wonderful views of the Serengeti National Park, it is one of the first camps in the Mara to witness the legendary annual migration of wildebeest, which thunders by from June to September each year. Sala's Camp has become renowned for combining an authentic safari experience with hospitality and fine dining.

Accommodation

The camp can accommodate up to 18 guests in seven luxury tents including a spacious honeymoon tent, which can also accommodate a family of up to four. The Camp's interiors are elegant and comfortable. All rooms have en-suite bathrooms with hot showers, baths, running water and flushing toilets.

Children

Children of all ages are welcome.

Food & Drink

Meals and drinks are included in the room rate. Champagne and luxury spirits & wines are not, but can be purchased at additional cost.

Payments

Visa is accepted for payment of any extras. Local currency and USD cash is also accepted and required for tips.

Power & Communications

24 / 7 power is supplied by solar and back-up generator.

Rooms have power points to charge personal electronics.

There is Wi-fi in the central tent.

There is patchy phone signal at the camp for local networks.

Getting there

Regular, commercial flights from Wilson Airport in Nairobi fly to Keekorok Airstrip every day. The flight takes approximately 60 minutes. From the airstrip it's a 15 km / 45-minute game drive to the camp. By road, the journey from Nairobi is 250 km, approximately 6 hours.

MASAI MARA RESERVE (SOUTH EAST) ACCOMMODATION INFO & AMENITIES

Notes:

1. All hotel rooms have; en-suite bathrooms, flush toilets and provide shampoo & conditioner.
2. All hotels can cater for specific dietary requirements if notified in advance.
3. All hotels with capability to host guests with disabilities require advance notice to secure appropriate rooms.

Key:

✓	Amenity available at no additional cost
✓ \$	Amenity available at additional cost
✗	Amenity not available

	Ilkeliani	Sand River Camp	Mara Explorer	Sala's Camp
Wi-fi	In central areas	✓	✓	In central areas
Power points in rooms for charging	✓	✓	✓	✓
Phone signal	Patchy	Patchy	Good	Patchy
Safe in room	✓	✓	In central office	✓

Hair dryers	✓	✓	✓	✓
Cots available	✓	✓	✗	✓
Baby-sitting service	✓\$	✗	✗	✗
Family rooms	Under construction	✓	✗	✓
Room mini bar	✗	✗	✗	✗
Tea & coffee maker in room	✗	✗	✗	✗
Mosquito net	✗	✓	✗	✗
Shower type	Normal shower	Normal shower	Normal shower	Normal shower
Air conditioning	✗	✗	✗	✗
Laundry	✓\$	✓	✓\$	✓
Day game drives	✓	✓	✓\$	✓
Night game drives	✗	✗	✗	✗
Guided walks	✓	✗	✗	✓
Cultural visits	✓\$	✓\$	✓\$	✓\$
Bush meals	✓	✓	✓\$	✓
Sundowners in the bush	✓	✓	✓\$	✓
Fly camping	✗	✗	✗	✗
Hot air balloon	✓\$	✓\$	✓\$	✓\$
Fishing	✗	✗	✗	✗
Horse / Camel safaris	✗	✗	✗	✗
Swimming pool	✗	✓	✗	✓
Spa	✗	✗	✗	✓\$
Gym	✗	✗	✗	✓
Wheelchair access	✗	✗	✓	✓
Airstrip transfers	✓	✓	✗	✓
Late check-out possible	✓\$	✓\$	✓\$	✓\$

Olderkesi Conservancy

Cottar's 1920s Camp



Overview

Designed in an authentic 1920s style, Cottar's 1920s Safari Camp has won numerous awards over the last 20 years including best camp, guides, walking safari and more. The camp is located in its own 7,608-acre private conservancy, one kilometre away from the Masai Mara Reserve. Meaning guests can access the reserve easily while enjoying the benefits of being on a private conservancy, including night game drives and guided walks. Cottar's 1920 provides the romance of safari under cream canvas tents, the style of a bygone era, while at the same time supplying the amenities required by today's modern world travellers. and professional guides. Cottar's offer an abundance of wildlife, a guarantee of privacy, and the highest standards of professional guiding, Cottar's guides' qualifications are the highest in Africa, in a luxurious and authentic camping environment.

Accommodation

Nine beautiful en-suite tents make up the camp accommodation. All tents are classically furnished with large, mosquito netted beds, dark wood furniture, old pictures and even brass gramophones. Large, solid bathroom structures at the back of the tent house a plumbed walk-in shower and separate flush toilet. Guests can choose from twin or double tents and some rooms can accommodate an additional bed.

Children

Children of all ages are welcome.

Food & Drink

Meals and drinks are included in the room rate. Champagne and luxury spirits & wines are not, but can be purchased at additional cost.

Payments

Visa & Mastercard are accepted for extras. Local currency and USD cash is also accepted and required for tips.

Power & Communications

24 / 7 power is supplied by solar and back-up generator.

Rooms have power points to charge personal electronics.

There is Wi-fi in the camp's central tent.

There is patchy phone signal at the camp for local networks.

Getting there

Regular, commercial flights from Wilson Airport in Nairobi fly to Keekorok Airstrip every day. The flight takes approximately 60 minutes. From the airstrip it's an enjoyable 20km / 2-hour game drive to the camp. Chartered flights can make use of the camp's private airstrip which is 5 km / 10mins to the camp by car. By road, the journey from Nairobi is 260 km, approximately 6.5 hours.

Cottar's Private Bush Villa



Overview

In 2016 cottar's Bush Villa won the World Travel Award for Africa's Leading Luxury Private Villa. This is testament to the high level of luxury, exceptional service and varied number of activities on offer. Not to mention that it's on the doorstep of the Masai Mara, argued by many to be the eighth wonder of the world. Able to host

12 guests, this exclusive villa guarantees the highest standards of professional guiding, Cottar's guides' qualifications are the highest in Africa, in a luxurious and elegant safari environment.

The villa has a breathtaking view onto the savannah plains that carry the great annual wildebeest migration, and is set amidst a backdrop of the Olderkesi Hills. Guests can enjoy privately guided game drives, night game drives, bush walks, swimming and fishing. The villa is over 10,000 square feet in size, and features a large living room, dining room, a magnificent viewing deck, and five bedrooms with guests cared for by a dedicated staff of eight.

Accommodation

Rented on an exclusive basis, 12 guests can stay in the villa's five rooms. Stretched over two floors, each room is slightly different in size and layout but all are well-lit, en-suite, spacious and beautifully designed. Guests can choose from twin or double tents and some rooms can accommodate an additional bed.

Children

Children of all ages are welcome.

Food & Drink

Meals and drinks are included in the room rate. Champagne and luxury spirits & wines are not, but can be purchased at additional cost.

Payments

Visa & Mastercard are accepted for extras. Local currency and USD cash is also accepted and required for tips.

Power & Communications

24 / 7 power is supplied by solar and back-up generator.

Rooms have power points to charge personal electronics.

There is Wi-fi throughout the villa.

There is patchy phone signal at the camp for local networks.

Getting there

Regular, commercial flights from Wilson Airport in Nairobi fly to Keekorok Airstrip every day. The flight takes approximately 60 minutes. From the airstrip it's an enjoyable 20 km / 2-hour game drive to the villa. Chartered flights can make use of the villa's private airstrip which is 8 km / 15mins by car. By road, the journey from Nairobi is 260 km, approximately 6.5 hours.

OLDERKESI CONSERVANCY ACCOMMODATION INFO & AMENITIES

Notes:

1. All hotel rooms have; en-suite bathrooms, flush toilets and provide shampoo & conditioner.
2. All hotels can cater for specific dietary requirements if notified in advance.
3. All hotels with capability to host guests with disabilities require advance notice to secure appropriate rooms.

Key:

✓	Amenity available at no additional cost
✓ \$	Amenity available at additional cost
✗	Amenity not available

	Cottar's 1920s Camp	Cottar's Private Bush Villa
Wi-fi	In central tent	✓

Power points in rooms for charging	✓	✓
Phone signal	Patchy	Patchy
Safe in room	✓	✓
Hair dryers	✓	✓
Cots available	✓	✓
Baby-sitting service	✓ \$	✓ \$
Family rooms	✓	✓
Room mini bar	✗	✗
Tea & coffee maker in room	✗	✓
Mosquito net	✓	✓
Shower type	Normal shower	Normal shower
Air conditioning	✗	✗
Laundry	✓	✓
Day game drives	✓	✓
Night game drives	✓	✓
Guided walks	✓	✓
Cultural visits	✓ \$	✓ \$
Bush meals	✓	✓
Sundowners in the bush	✓	✓
Fly camping	✓	✓
Hot air balloon	✓ \$	✓ \$
Fishing	✓ (Seasonal)	✓ (Seasonal)
Horse / Camel safaris	✗	✗
Swimming pool	✓	✓
Spa	✓ \$	✓ \$
Gym	✗	✓
Wheelchair access	✓	✓
Airstrip transfers	✓	✓
Late check-out possible	✓ \$	✓ \$

Naibosho Conservancy

Naboisho Camp



Overview

Set in the 210km² private Mara Naboisho Conservancy, Naboisho Camp offers spectacular game viewing, from the herds of antelope that dot the plains of this wilderness corridor throughout the year to the high concentrations of predators, including lion and cheetah. However, the real magic of Naboisho Camp is its sheer exclusivity. With just nine spacious tented suites, Naboisho is an intimate and elegant safari camp that balances your wilderness experience with discreet creature comforts.

Naboisho Camp offers the options of fly camping, walking safaris, and night drives – activities not commonly available in most national parks. Guests can also make use of specially designed photographic safari vehicles, which allow guests to get closer than ever to the wildlife.

Accommodation

Nine spacious tents, including two family tents, can accommodate up to 23 guests in total. All tents are en-suite with both indoor and outdoor hot running showers and a private veranda with day bed. Rooms can be set up as twins or doubles and can accommodate an additional bed.

Children

Children five years and older can stay at the camp.

Food & Drink

Meals and drinks are included in the room rate. Champagne and luxury spirits and wines are not, but can be purchased at additional cost.

Payments

Visa & Mastercard are accepted for any extras., with a 5% surcharge. Local currency and USD cash is also accepted and required for tips.

Power & Communications

24 / 7 power is supplied by solar and back-up generator.

Rooms have power points to charge personal electronics.

There is Wi-fi in the common areas.

There is patchy phone signal at the camp for local networks.

Getting there

Regular, commercial flights from Wilson Airport in Nairobi fly to Ol Seki Airstrip every day. The flight takes approximately 60 minutes. From the airstrip it's a 10 km / 20-minute game drive to the camp. By road, the journey from Nairobi is 245 km, approximately 5.5 hours.

Note: Naibosho Camp is closed 6th April – 31st April

Kicheche Valley Camp



Overview

Located in acacia woodlands in a secluded valley of the Naboisho Conservancy, Kicheche Valley Camp is an intimate and luxurious tented camp. The Moliband stream, which runs past the tents and central dining and lounge area attracts plenty of wildlife, which guests can enjoy from the comfort of the lodge.

The large, tented dining area and lounge has a homely feel with comfortable sofas and armchairs and a large dining table. Open-sided walls allow guests to enjoy the sights and sounds of the bush while appreciating the delicious meals.

Accommodation

The six spacious tents are built on wooden platforms which double up as private verandas. Mesh walls keep the tent temperature cool and allow guests to enjoy views of the conservancy from the comfort of their beds. The en-suite bathrooms are large and fitted out with wash basins, plumbed shower and separate flush toilet. Guests can choose from twin or double beds and some rooms can accommodate an additional bed.

Children

Children of all ages are welcome but we wouldn't recommend it for children under 12 years old, due to the grown up atmosphere of the camp.

Food & Drink

Meals and drinks are included in the room rate. Champagne and luxury spirits and wines are not, but can be purchased at additional cost.

Payments

Visa & Mastercard are accepted for any extras., with a 5% surcharge. Local currency and USD cash is also accepted and required for tips.

Power & Communications

24 / 7 power is supplied by solar and back-up generator.

Rooms have power points to charge personal electronics.

There is Wi-fi in the common areas.

There is patchy phone signal at the camp for local networks.

Getting there

Regular, commercial flights from Wilson Airport in Nairobi fly to Ol Seki Airstrip every day. The flight takes approximately 60 minutes. From the airstrip it's a 4 km / 5-minute drive to the camp. By road, the journey from Nairobi is 220 km, approximately 5 hours.

Mara Nyika





Overview

Mara Nyika, meaning “Large Plains or Great Plains,” is an intimate four tent camp set in a valley, straddling a small stream on the western side of the Naboisho Conservancy. Built to feel like a luxurious treehouse, raised walk ways lead from the main area to the canvas tents. Built on stilts, the main area and rooms provide guests with stunning views of the plains, over the top of the surrounding Acacia trees.

Guests can enjoy complimentary walking and boating safaris, night game drives, bush meals and use of professional cameras, supplied in each tent. Service at Mara Nyika is exceptional and staff ensure guests have everything they need. At the same time, privacy is the key to Mara Nyika and, as they put it, guests can feel free to ‘live, think, explore, be romantic and be pampered’

Accommodation

At present there are four luxury tented suites, each with their own veranda, lounge area, spacious bedroom area and en-suite bathroom. Truly luxurious, guests may forget they are in a tent. Guests can choose from twin or double beds and some rooms can accommodate an additional bed. As of 1st June 2020, a new, private two-bedroom suite will be available, complete with private butler, chef and private game viewing vehicle.

Children

Children must be eight years and older to stay at the camp. Guests wishing to book the entire camp exclusively can bring younger children.

Food & Drink

Meals and drinks are included in the room rate. Only champagne is not, but can be purchased at additional cost.

Payments

Visa & Mastercard are accepted for any extras., with a 3.5% surcharge. Local currency and USD cash is also accepted and required for tips.

Power & Communications

24 / 7 power is supplied by solar and back-up generator.

Rooms have power points to charge personal electronics.

There is Wi-fi throughout the camp.

There is patchy phone signal at the camp for local networks.

Getting there

Regular, commercial flights from Wilson Airport in Nairobi fly to Ol Seki Airstrip every day. The flight takes approximately 60 minutes. From the airstrip it's a 20 km / 40-minute game drive to the camp. By road, the journey from Nairobi is 250 km, approximately 6 hours.

NAIBOSHO CONSERVANCY ACCOMMODATION INFO & AMENITIES

Notes:

1. All hotel rooms have; en-suite bathrooms, flush toilets and provide shampoo & conditioner.
2. All hotels can cater for specific dietary requirements if notified in advance.
3. All hotels with capability to host guests with disabilities require advance notice to secure appropriate rooms.

Key:

✓	Amenity available at no additional cost
✓ \$	Amenity available at additional cost
✗	Amenity not available

	Naibosho Camp	Kicheche Valley Camp	Mara Nyika
Wi-fi	In central tent	In central tent	✓
Power points in rooms for charging	✓	✓	✓
Phone signal	Patchy	Patchy	Patchy
Safe in room	In manager's office	In reception	✓
Hair dryers	✓	✗	✓
Cots available	✗	✗	✗
Baby-sitting service	✗	✗	✗
Family rooms	✓	✗	As of 1 st June 2020
Room mini bar	✗	✗	✗
Tea & coffee maker in room	✓	✗	✓
Mosquito net	✗	✗	✗
Shower type	Normal shower	Normal shower	Normal shower
Air conditioning	✗	✗	Fan
Laundry	✓	✓	✓
Day game drives	✓	✓	✓
Night game drives	✓	✓	✓
Guided walks	✓ \$	✓	✗
Cultural visits	✓ \$	✓ \$	✓ \$
Bush meals	✓	✓	✓
Sundowners in the bush	✓	✓	✓
Fly camping	✓ \$	✓ \$	✗
Hot air balloon	✓ \$	✓ \$	✓ \$
Fishing	✗	✗	✗

Horse / Camel safaris	✗	✗	✗
Swimming pool	✓	✗	✗
Spa	✗	✓\$	✗
Gym	✗	✗	✗
Wheelchair access	✗	✗	✗
Airstrip transfers	✓	✓	✓
Late check-out possible	✓\$	✓\$	✓\$

Mara Triangle

Little Governors' Camp



Overview

Established in the 1970s, Little Governors' Camp has long been a favourite with travelers to the Mara. The camp is an intimate camp, located on the edge of the Mara National Reserve, just inside the Mara Triangle. On arrival, guests get a sense of the excitement and charm that exemplify the camp. After disembarking vehicles from the airstrip, guests cross the Mara River by dinghy boat then climb three flights of stairs up the river bank before being escorted through the riverine forest to the camp.

Unfenced and positioned around a large watering hole, animals are regular visitors into the camp. Indeed, during al fresco breakfast and lunch meals, resident warthogs frequently wander amongst the tables and on occasion, inquisitive elephants make an appearance in search of something tasty. Guards are on hand to ensure animals pose no danger but there is no doubt you are in the wild and living amongst the animals. A comfortable lounge area and bar are the scene for evening sundowners and afternoon tea, while the dining area overlooking the waterhole is where guests enjoy delicious evening meals.

Accommodation

The camp's 17 tents stretch along the edge of the marsh, meaning guests can enjoy watching animals from the comfort of the tent. All similar in layout, tents have; a deck veranda with small coffee table and director's chairs, comfortable bed and writing desk and at the back of the tent, an en-suite bathroom. The bathroom includes a wash basin, hot water shower and separate flush toilet.

Children

Children of all ages are welcome but as the property is unfenced, they should be supervised at all times.

Food & Drink

Meals are included in the room rate. Drinks are not but can be purchased at additional cost.

Payments

Visa & Mastercard are accepted for extras. Local currency and USD cash is also accepted and required for tips.

Power & Communications

24 / 7 power is supplied by solar and back-up generator.

Rooms have power points to charge personal electronics.

There is Wi-fi throughout the camp.

There is patchy phone signal at the camp for local networks.

Getting there

Regular, commercial flights from Wilson Airport in Nairobi fly to Musiara Airstrip every day. The flight takes approximately 60 minutes. From the airstrip it's a 5 km / 15-minute game drive to the camp, followed by passenger dinghy crossing and short walk. By road, the journey from Nairobi is 250 km, approximately 6 hours.

Governors' Il Moran Camp



Overview

Hidden deep in a forest of ancient trees on the winding banks of the Mara River, Governors' Il Moran Camp is one of Little Governors' sister camps. With less tents, Il Moran is a more intimate and luxurious option for travelers. Meals are served on the raised wooden decking of the main mess and dining tent, offering a bird's

eye view of hippos in the river below. A sunken fire pit on the deck is lit every evening for guests to enjoy an aperitif and discuss the day's events, under the stars.

Accommodation

Accommodation consists of 10 very large tents, set on large concrete plinths. Broad verandas accommodate an outdoor sofa, coffee tables and chairs creating a space for guests to relax in privacy. Rooms are fitted with either double or twin beds, made with reclaimed wood and delightfully comfortable mattresses. En-suite bathrooms separated by a canvas zip door contain large walk-in showers, claw-foot bathtub, bidet, washbasins and flush toilet. While there isn't a specific family tent, two tents close together can be used and tents can accommodate one extra bed.

Children

Children must be eight years or older to stay at the camp.

Food & Drink

Meals and drinks are included in the room rate. Only champagne and luxury spirits and wines are not, but can be purchased at additional cost.

Payments

Visa & Mastercard are accepted for extras. Local currency and USD cash is also accepted and required for tips.

Power & Communications

24 / 7 power is supplied by generator.

Rooms have power points to charge personal electronics.

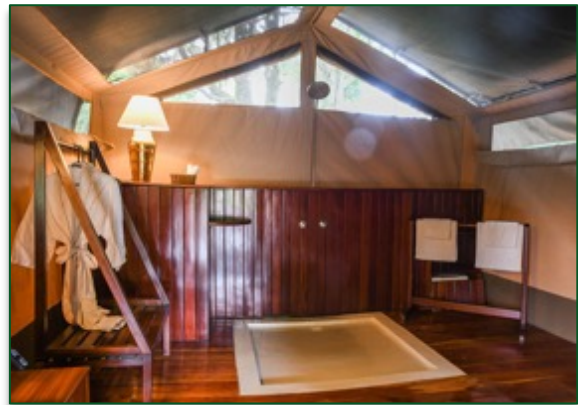
There is Wi-fi throughout the camp.

There is phone signal at the camp for local networks.

Getting there

Regular, commercial flights from Wilson Airport in Nairobi fly to Musiara Airstrip every day. The flight takes approximately 60 minutes. From the airstrip it's a 5 km / 15-minute game drive to the camp. By road, the journey from Nairobi is 250 km, approximately 6 hours.

Governor's Private Camp



Overview

Located on a secluded bend of the Mara River, Governor's private camp is often referred to as the 'jewel in the Governor's Camp crown'. This picturesque spot welcomes a variety of animals who come to drink from the river. Hippo laze in the shallows and elephant bring their calves for a playful dip. The forest around the camp is home to many beautiful birds from rare Trogons and Turacos to nesting Hornbills.

Large in size, the camp can be booked on a tent-by-tent basis or hired out exclusively by a family or group. In order to book the camp exclusively, guests must book a minimum of six tents for two nights. Being a private camp, schedules are relaxed and flexible meaning guests can choose when they want to do game drives and meals. Balloon flights can be arranged from the camp with the launch site nearby, at the sister camp Little Governor's.

Accommodation

The camp has 8 well sized en-suite rooms, decorated with dark coloured wood. Light and airy the tents run along the high bank of the Mara River. Spacious en-suite bathrooms are kitted out with a flush toilet and powerful, open-sided shower.

Children

Children of all ages are welcome.

Food & Drink

Meals and drinks are included in the room rate. Champagne and luxury spirits & wines are not included.

Payments

Visa & Mastercard are accepted. Local currency and USD cash is also accepted and required for tips.

Power & Communications

24 / 7 power is supplied by generator.

Rooms have power points to charge personal electronics.

There is Wi-fi in the central areas of the camp.

There is patchy phone signal at the camp for local networks.

Getting there

Regular, commercial flights from Wilson Airport in Nairobi fly to Musiara Airstrip every day. The flight takes approximately 60 minutes. From the airstrip it's a 5 km / 15-minute game drive to the camp. By road, the journey from Nairobi is 250 km, approximately 6 hours.

Bateleur Camp



Overview

Bateleur Camp is nestled in a lush riverine forest at the foot of the picturesque Oloololo escarpment, the rim of the Great Rift Valley and location for the final scene in Out of Africa. Bateleur Camp is essentially two small camps in one, the intimate camp offers exceptional levels of luxury and service. Each tent has its own private butler and housekeeper, reflecting the ambiance and glamour of Kenyan explorers of old.

Refreshing lap pools in each camp provide cool comfort in between game drives and delectable cuisine is served in a memorable setting beneath the stars. Bush breakfasts and romantic sundowners while watching wildlife offer an unforgettable African experience. Adventures at Bateleur Camp include twice-daily game drives,

including spot-lit night drives. The camp also offers a range of additional activities such as bush walks, hot air balloon safaris, community excursions, a well- equipped gym and wellness treatment center.

Accommodation

The camp is split into two separate and intimate nine tent camps. Overlooking the Mara plains below, each luxurious tent features a grand, split level veranda. The lower level has a soft sofa seating area and the upper level has a table and chairs for guests to enjoy private meals. Inside the tent is a seating area with armchairs, comfortable bed and writing desk. Opulent bathrooms boast a bath tub, wash basins and both an indoor and outdoor shower. Guests can choose twin or double beds and an additional bed can be added to some rooms.

Children

Children must be five years or older to go on game drives.

Food & Drink

Meals and drinks are included in the room rate. Only champagne and luxury spirits and wines are not, but can be purchased at additional cost.

Payments

Visa & Mastercard are accepted for any extras, with a 3.5% surcharge. Local currency and USD cash is also accepted and required for tips.

Power & Communications

24 / 7 power is supplied by solar power and back-up generator.

Rooms have power points to charge personal electronics.

There is Wi-fi throughout the camp.

There is phone signal at the camp for local networks.

Getting there

Regular, commercial flights from Wilson Airport in Nairobi fly to Kichwa Tembo Airstrip every day. The flight takes approximately 60 minutes. From the airstrip it's a 15 km / 45-minute game drive to the camp. By road, the journey from Nairobi is 250 km, approximately 6 hours.

Sanctuary Olonana





Overview

Sanctuary Olonana is an exceptional luxury safari lodge set on a private stretch of the Mara River. With glass-sided suites, the clever camp design allows guests to enjoy the breath-taking natural wonders of the Mara, in total privacy.

As the afternoon game drive comes to an end, guests can enjoy sundowners from specially chosen vantage points overlooking the Mara plains. Back at camp an idyllic bush dinner can be laid out in a private and secluded clearing under the stars, in the middle of the African bush. For a night camp, guests can retire to the warmth of the campfire to absorb the peace and beauty of the African night.

Accommodation

The camp has 14 en-suite, modern and elegant rooms, all built with floor-to-ceiling glass front doors that open up to reveal magnificent Mara River views. Sumptuous king-sized beds, indoor and outdoor lounge areas and a daybed on the deck allow guests to relax both inside and out. Spacious and refined marble and slate-accented bathrooms come with bath tub, double vanity sinks and a rain shower. The Geoffrey Kent suite, with two connected en-suite bedrooms, is ideal for families or groups of friends.

Children

Children of all ages are welcome.

Food & Drink

Meals and drinks are included in the room rate. Champagne and luxury spirits & wines are not included.

Payments

Visa & Mastercard are accepted for any extras, with a 3% surcharge. Local currency and USD cash is also accepted and required for tips.

Power & Communications

24 / 7 power is supplied from the national grid and back-up generator.

Rooms have power points to charge personal electronics.

There is Wi-fi throughout the camp.

There is good phone signal at the camp for local networks.

Getting there

Regular, commercial flights from Wilson Airport in Nairobi fly to Kichwa Tembo Airstrip every day. The flight takes approximately 60 minutes. From the airstrip it's an 8 km / 15-minute game drive to the camp. By road, the journey from Nairobi is 240 km, approximately 6 hours.

MARA TRIANGLE ACCOMMODATION INFO & AMENITIES

Notes:

1. All hotel rooms have; en-suite bathrooms, flush toilets and provide shampoo & conditioner.
2. All hotels can cater for specific dietary requirements if notified in advance.
3. All hotels with capability to host guests with disabilities require advance notice to secure appropriate rooms.

Key:

✓	Amenity available at no additional cost
✓\$	Amenity available at additional cost
✗	Amenity not available

	Little Governors' Camp	Governors' II Moran Camp	Governor's Private Camp	Bateleur Camp	Sanctuary Olonana
Wi-fi	✓	✓	✓	✓	✓
Power points in rooms for charging	✓	✓	✓	✓	✓
Phone signal	Patchy	✓	Patchy	✓	✓
Safe in room	In reception	✓	Valuables can be stored at the main camp	✓	✓
Hair dryers	✓	✓	✓	✓	✓
Cots available	✓	✗	If requested in advance	✓	✓
Baby-sitting service	✓\$	✗	✓\$	✓	✓\$
Family rooms	✗	✗	✗	✓	✓
Room mini bar	✗	✓	✗	✓	✓
Tea & coffee maker in room	✓	✓	✓	✗	✓
Mosquito net	✗	✗	✗	✗	✓
Shower type	Normal shower	Normal shower	Normal shower	Normal shower	Normal shower
Air conditioning	✗	✗	✗	Fan	✗
Laundry	✓	✓	✓	✓	✓
Day game drives	✓	✓	✓	✓	✓
Night game drives	✗	✗	✗	✓	✓
Guided walks	✓\$	✓\$	✓\$	✓	✓
Cultural visits	✓\$	✓\$	✓\$	✓\$	✓\$
Bush meals	✓\$	✓\$	✓\$	✓	✓
Sundowners in the bush	✓\$	✓	✓	✓	✓
Fly camping	✗	✗	✗	✗	✗
Hot air balloon	✓\$	✓\$	✓\$	✓\$	✓\$
Fishing	✗	✗	✗	✗	✗

Horse / Camel safaris	✗	✗	✗	✗	✗
Swimming pool	✗	✗	✗	✓	✓
Spa	✓\$	✓\$	✓\$	✓\$	✓\$
Gym	Being built	✓	✗	✓	✗
Wheelchair access	✓	✓	✓	✓	✓
Airstrip transfers	✓	✓	✓	✓	✓
Late check-out possible	✓	✓	✓	✓\$	✓

MERU NATIONAL PARK

Meru lies 350 km (220 miles) north east of Nairobi and is 870 km² (336 miles²) in size, boasting a wide variety of landscapes and habitats from forest to swamp and savannah. Rivers that begin on Mount Kenya run through into the Tana River which forms the parks lower boundary. Wildlife is plentiful and varied. Guests can expect to see lion, world renowned for its exceptional populations of lion, elephant, cheetah, leopard, black rhino, zebra, gazelle, oryx and some of the rarer antelope, Lesser Kudu and duiker, also the more common dik dik, one of Africa's smallest antelope.

Why visit? Apart from the wildlife and relatively low number of visitors, the park is most famous as the setting for Joy Adamson's book "Born Free", the story of the Adamson's life and research amongst lion and cheetah. "Elsa" the lioness was the most well-known and her grave is marked here.



Elsa's Kopje



Overview

The word Kopje (pronounced ko-pyuh) means a small hill in a generally flat area, much like the Mughwango Hill that the camp is sculpted into. Unashamedly romantic and beautifully styled, the camp is located above the site of George Adamson's original camp, where he raised and released orphan lions long before conservation became fashionable.

Two large, thatched roof buildings house the communal bar, lounge area and separate dining room. Open at the front, the buildings have panoramic views of the park plains below. An inviting swimming pool and adjacent spa offer guests a chance to relax and unwind.

Accommodation

The camp offer four different types of accommodation, all en-suite: Six exquisite, single-room **cottages** with private decks. A two-bedroom **family cottage** with beautiful living room, large private deck and outside baths. Two **honeymoon suites** with private sitting room, romantic outdoor baths and private deck. A separate two-bedroom **private house** which has its own large dining and sitting room, private garden and infinity pool.

Rooms are spacious and beautifully furnished. Careful thought has been put into the camp design to provide maximum comfort and luxury while maintaining a visual balance with the environment. The Guests can choose from double, twin or single room arrangements when booking.

Children

Children of all ages are welcome but we recommend children over 5 years old.

Food & Drink

Meals and drinks are included in the room rate. Champagne and luxury spirits & wines are not included.

Payments

Visa & Mastercard are accepted for any extras. Local currency and USD cash (printed after the year 2,000), GBP and EUROS are also accepted and required for tips.

Power & Communications

The camp has 24 / 7 power supply.

Rooms have power points to charge phones. A charging station in the main area is used for laptops & cameras.

There is Wi-fi in the camp's main areas.

There is good phone signal at the camp for local networks.

Getting there

Elsa's Camp is a 45-minute flight from Nairobi with a leisurely 20-minute game drive from the airstrip. By road, the journey from Nairobi is 330 km, approximately 7.5 hours.

MERU NATIONAL PARK ACCOMMODATION INFO & AMENITIES

Notes:

1. All hotel rooms have; en-suite bathrooms, flush toilets and provide shampoo & conditioner.
2. All hotels can cater for specific dietary requirements if notified in advance.
3. All hotels with capability to host guests with disabilities require advance notice to secure appropriate rooms.

Key:

✓	Amenity available at no additional cost
✓ \$	Amenity available at additional cost
✗	Amenity not available

	Elsa's Kopje
Wi-fi	✓
Power points in rooms for charging	✓
Phone signal	✓
Safe in room	✓
Hair dryers	Main area
Cots available	✓
Baby-sitting service	✗
Family rooms	✓
Room mini bar	✗
Tea & coffee maker in room	✗
Mosquito net	✗
Shower type	Normal shower
Air conditioning	✗
Laundry	✓
Day game drives	✓

Night game drives	✗
Guided walks	✓\$
Cultural visits	✓\$
Bush meals	✓
Sundowners in the bush	✓
Fishing	✓
Horse / Camel safaris	✗
Swimming pool	✓
Spa	✓\$
Gym	✗
Wheelchair access	On request
Airstrip transfers	✓
Late check-out possible	✓

OTHER KENYAN PARKS & ATTRACTIONS

THE ABERDARES & MOUNT KENYA

Mount Kenya is the country's highest mountain, sitting on the equator its summit is 5199 m (17,058 ft) high. The mountain consists of three principal zones: the rocky peak area with its glaciers and snowdrifts; the alpine zone with its distinctive giant vegetation and the vast gently slopes covered in montane forest and bamboo jungle. Reaching the summit requires rock climbing skills but fit walkers, with several day's acclimatizing can reach point Lenana at 4985 m (16,355 ft). The forested slopes are full of animals, most of which can be seen from Mountain Lodge which lies inside the forest on the south side of the mountain.

The Aberdare Mountain Range lies 17 km (11 miles) north west of Nyeri town and about 100 km (62 miles) from Nairobi. The highest peak is 3,998 m (13,120 ft) high and the slopes below the alpine moorlands are covered in dense forest. The forested salient is part of an ancient elephant migration route between the Aberdares and Mount Kenya. Visitors can expect to see elephant, rhino, giant forest hog, rhino, colobus monkey and an array of bird species. With a bit of luck leopards and the extremely rare bongo antelope can also be seen. More recently, the park has become famous for sightings of melanistic leopard and serval cats.

SOYSAMBU CONSERVANCY

Soysambu is a 194.25 km² (75 miles²) conservancy situated in Kenya's central rift valley approximately 130km (80 miles) northwest of Nairobi and approximately 25 km (15.5 miles) southeast of Nakuru. The conservancy is bordered by Lake Nakuru National Park on the west, volcanoes Ol Doinyo Eburru to the south and Menengai to the north. Activities available include game drives, camel treks, horse riding and motorcycle safaris.

TSAVO NATIONAL PARK

The combined area of Tsavo East and West National Parks makes Tsavo one of the world's largest game sanctuaries, larger in size than Jamaica. It covers over 20,000 km² (7,720 miles²) and lies roughly half way between Mombasa and Nairobi. The parks contain over 60 mammal species, 400 bird species and over a thousand plant species as well as the natural attractions of Mzima Springs, Lake Lipe, Luggard Falls and The Aruba Dam.

MOMBASA & THE NORTH COAST

Mombasa is Kenya's second largest town and the oldest with a history stretching back almost 2,000 years. The town is blend of ancient and modern, with a cosmopolitan population. Sights include the dhow harbour, the Old Town, Mackinnon market and the 16th century Fort Jesus.

The "North Coast" has long stretches of beaches fringed with palms, casuarinas, oleanders and frangipani and lies between Mombasa and Kilifi, which is 70 km (45 miles) north of Mombasa. The main beaches are Nyali, closest to Mombasa, Bamburi, Kenyatta, Mtwapa, Kikambala and Kilifi. Marine activities are available along with deep sea fishing. Golf is also available at Nyali. The Mombasa Marine National Park is 10 km² (3.8 miles²) situated 13 km north of Mombasa and is surrounded by a 200 km² (77 miles²) Marine National Reserve.

THE SOUTH COAST

All the beaches which lie south of Mombasa form the "South Coast" with hotels and resorts centered on Diani Beach about 40 km (25 miles) from Mombasa. Likoni, just across from the Mombasa ferry and Shimoni near the Tanzania border. Diani beach is 10 km (6 miles) long, a vast uninterrupted stretch of pure white sand. Most marine activities are available including water skiing, windsurfing, kitesurfing and scuba diving. Deep sea fishing takes place all year except May – July. The billfish season is usually between November to April. Shimoni is the gateway to the 28 km² (10 miles²) Kisite Marine National Park and Wasini Island.

MALINDI & WATAMU

The small town of Malindi, where Hemingway spent time in the 1930s, lies 120 km (75 miles) north of Mombasa on a 7 km long curving beach. There is a casino, night clubs, Islamic mosques, a colourful market, a nine-hole golf course and the Malindi Marine National Park.

Watumu is a small resort area 15 km (9 miles) south of Malindi. A hot spot for sea turtle conservation, March through September is when turtles come to nest on the beach. Low season is between June and October when the tides bring in large amounts of seaweed.

Both Malindi and Watamu are excellent bases for deep sea fishing, attracting anglers from all over the world. Several world records for big game fish have been set here.

LAMU

215 km (83 miles) north of Malindi is the Lamu Archipelago and UNESCO World Heritage Site, Lamu Town. Lamu town sits on the main island and carries on its daily Islamic life largely unchanged for hundreds of years. There are no cars here, transport is by boat, foot or donkey and the only way in is by air. It's beautiful, isolated beaches have made the islands a popular holiday home destination for several celebrities and royals.

LAKE TURKANA

Lake Turkana is situated 650 km (404 miles) north of Nairobi on the Ethiopian border. Originally known as Lake Rudolf or Jade Sea it is 296 km (185 miles) long and 1,600 km² (620 miles²) one of the largest of the Rift Valley lakes.

The shores are arid and windblown but are home to a number of nomadic tribes and a surprising variety of wildlife, including about 12,000 Nile crocodile, and an immense amount of birds. The lake is home to tiger fish, tilapia and Nile perch and fishing trips can be arranged. There is no scheduled flight to Lake Turkana so charter aircraft and 4-wheel drive vehicles are the only way to get there.

LAKE NAKURU NATIONAL PARK

A shallow alkaline lake on the floor of the Rift Valley 156 km (100 miles) north west of Nairobi. Most famous for the hundreds of thousands of pink flamingoes which seasonally live on the lake, the park is 188 km² (72 miles²) and is also a rhino sanctuary. Around its shores there is a good chance of seeing leopard and lion as well as other plains and forest game.

LAKE NAIVASHA

The highest and purest of the Rift Valley lakes, Lake Naivasha lies 84 km (52 miles) north west of Nairobi. Its shores are lined with fertile farms and thousands of yellow fever trees. The lake is home to hippos and 340 species of birds. On a boat trip to Crescent Island there is an opportunity to see small herds of plains of game including waterbuck, dik-dik and Thomson's gazelle.

LAKES BARINGO & BOGORIA

Lake Baringo is 280 km (174 miles) north east of Nairobi in the semi desert northern Rift Valley. Hippo and crocodile are found in plenty in this freshwater lake, but the major attraction is the multitude of birds of which 400 species have been identified here.

Lake Bogoria is a soda lake about 25 km (15 miles) south east of Baringo. Jets of steam and boiling water shoot out of geysers and when the water is low in Lake Nakuru, it is home to hundreds of thousands of flamingoes. It is best visited while staying at Lake Baringo, Nakuru or Naivasha.

LAKE VICTORIA

Lake Victoria is the world's second largest freshwater lake covering an area of 67,850 km² (26,200 miles²), about the size of the republic of Ireland and the source of the River Nile. Fishing and birdwatching day trips and overnights can be organized by flying up from the Masai Mara.

MOUNT ELGON

Mount Elgon whose highest peak is 4,320 m (14,178 ft) lies astride the Kenya-Uganda border, 365 km (227 miles) north-west of Nairobi. There is no permanent snow on the mountain but the peaks are surrounded with the afro-alpine vegetation of the high mountains of the equator. At lower levels there are bamboo and thick montane forests inhabited by elephants and buffalo. Part of the eastern slopes is a national park in which the Elgon caves are situated.

TAITA HILLS

The Taita Hills Game Sanctuary is 114 km² (44 mile²) and located between Tsavo East and West National Parks. It contains plenty of wildlife, many of which congregate at the water hole at Salt Lick Lodge.

SHIMBA HILLS NATIONAL PARK

The Shimba Hills is a cool forested plateau rising 446 m (1,500 ft) out of the equatorial coastal strip and is 46 km (30 miles) south west of Mombasa. The rolling grasslands and forests of giant primeval trees are home to a remarkable variety of wildlife but the most distinctive of the many species in the park's 192 km² (74 mile²) area are the Sable and Roan antelopes.

For more information on parks and the Kenya Wildlife Service, visit - <http://www.kws.go.ke/national-parks>

MAGICAL EXTENTIONS AND EXTRAS

HOT AIR BALLOONING OVER THE MAASAI MARA

Why not experience the ultimate freedom of drifting above the African plains in the most serene way possible? A hot air balloon ride is pure luxury, giving you a 360-degree vista over one of the world's most magnificent natural landscapes — Kenya's great wilderness, the Masai Mara. The sensation of drifting in an open basket with this unique aerial perspective over this classic savannah landscape is an unparalleled thrill but this aerial adventure is also amazingly peaceful, thanks to the silent, soothing motion. You'll start at dawn and witness the magic of the African sunrise from the sky and then enjoy the added indulgence of a champagne breakfast when you settle back to solid ground

HORSE RIDING IN KENYA

Cantering through the open savannah on the back of a horse is an awe-inspiring way to experience East Africa. Using beautiful thoroughbred animals with lovely temperaments, our horseback safaris allow you to cover a lot of ground, revealing impressive swathes of Kenya's stunning scenery. What's more, you'll get closer to wildlife than in a vehicle or on foot, giving you amazing encounters with the elephants, giraffes or zebras you pass along the way. A horseback safari is ideal for anyone with moderate horse-riding ability, and can be enjoyed as a day trip, three-day extension or as a longer safari in its own right. And it comes complete with the usual Africa House luxury, including accommodation in an exclusive luxury mobile camp with comfy beds and stylish furniture.

HELICOPTER EXCURSIONS IN KENYA

Kenya is a land of spectacular and diverse sights and there's nothing quite like a personal helicopter tour to experience them. Our amazing airborne safaris afford exhilarating views of landscapes and wildlife. They also make impossible journeys possible, reaching some of East Africa's most beautiful hidden natural features and providing rare glimpses into tribal life in the region's most remote corners. Our selection of one-day helicopter tours — delivered by pilots and guides — feature stunning mountain regions, vast wildlife-rich lakes, breathtaking geological features and fascinating cultural encounters.



ABOUT KENYA – INFO PACK

Home to a culturally diverse population of just over 52 million people, Kenya sits astride the equator bordering Ethiopia, Tanzania, Uganda and Sudan. The country covers an area over 580,000 km². (220,000 miles² / 140 million acres).

SOCIAL/ECONOMIC SITUATION

Nairobi is a major African hub with numerous African and international airlines connecting Kenya to the world. Rated the commercial hub of East Africa, Kenya has a liberal external trade system and a strong, market-friendly private sector. Agriculture and tourism remain the largest contributors to the country's GDP. Low infrastructure investment threatens Kenya's long-term position as the largest East African economy; and access to quality education and health services remains a challenge. Over 68% of the population is under 25 and life expectancy is an average of 66 years (2019). The unit of currency is the Kenyan shilling (KES). See [Today's Exchange Rate](#).

CULTURE

Kenya has been a major migratory pathway over the centuries, which has led to a diversity of people from almost every part of the continent. It is home to 42 ethnic groups, the largest being the Kikuyu (22%), followed by Luhya (14%), Luo (13%), Kalenjin (12%), Kamba (11%) and Meru (6%). Arabs, Asians and European form a small non-indigenous group (1%) and the remaining 21% is made up of other African tribes and groups not listed. The majority of Kenyans are Christian (Catholic and Protestant) at 85%. 11.1% of the population is Muslim and a small number are Sikhs and Hindus or follow traditional religions. Staple foods consist mainly of corn, maize, potatoes and beans however western diets are becoming more prevalent, particularly in cities.

LANGUAGE

The official national languages are Kiswahili and English. There are more than 80 tribal languages spoken across the country but English is predominantly used in commerce, the media and government. English is taught at all schools, widely understood and spoken at high levels throughout the tourism industry.

CLIMATE

Kenya enjoys a tropical climate, with warm and sunny days and cool evenings. It is hot and humid at the coast, temperate inland and very dry in the arid north and north-eastern parts of the country. Due to the high altitude of most safari itineraries, the atmosphere is usually pleasantly dry except at the coast which can sometimes be very hot and humid. As Kenya is on the equator, the sun is very strong and visitors are advised to take the necessary precautions.

The hottest periods are February, March and October with the coldest in June, July. The average annual temperatures are; Mombasa are; 22°C - 30°C (71°F - 86°F); Nairobi 13°C - 25°C (55°F - 77°F); and the North 23°C - 34°C (73°F - 93°F). There are two rainy seasons; the long rains are from early April through to late May, and the short rains last a few weeks around November and December. Even during these periods, the rain can be pleasant with early rain in the morning and late in the afternoons with fresh clear sunny periods in between.

TOURISM SEASONS

High Season (January - March)

January and February offer hot, dry weather good for wildlife watching as animals congregate around water sources. Shorter grass and less vegetation also make spotting animals easier.

Low Season (April - May)

Long, tropical rains mean accommodation is much quieter and prices cheaper. Wildlife is more dispersed and harder to spot in longer grass, but there are fewer tourists and vehicles. Some tracks are impassable due to bad weather and mosquitoes can be rife, in specific areas.

Peak Season (June - October)

The spectacular Great Migration of wildebeest and other plains game entering the Mara en-masse, usually occurs between July to October. This is the peak season for tourists in Kenya and the Mara specifically. The Migration is dictated by the rains and evolving climatic situations therefore predicting the exact date of the migration is nearly impossible. Expect high lodge prices, especially July to October.

Shoulder Season (Nov & Dec)

Short rains generally fall in November and December, but still an excellent time to visit. Prices drop from November, but advance reservations are still a good idea. This is an excellent time for birdwatching as migrant species arrive.

VISAS

Visas are required for most foreign nationals. As of Jan 2021, visas can only be obtained online, through www.evisa.go.ke. All applicants require return air tickets, a passport valid for a minimum period of 6 months from the date of entry into Kenya and at least one blank page in said passport.

You can get a Single Entry Visa to Kenya or an East African Single Tourist Visa, which allows you to enter Kenya, Rwanda and Uganda. Both visas are valid for a period of three months from the date of issue. For more information on visa requirements visit <http://evisa.go.ke/evisa-types.html> or the [Kenya High Commission website](#).

For confirmation of the visa type you require for your itinerary, contact Africa House.

Visa Costs – As of March 2020*

Single Entry Visa = USD \$51 (\$50 visa + \$1 service fee)

East African Tourist Visa = USD \$101 (\$101 visa + \$1 service fee)

Transit Visa = USD \$21 (\$20 visa + \$1 service fee)

**Please refer to www.evisa.go.ke for latest information & up to date costs.*

COVID-19

- Fortunately, Kenya has fared relatively well with Covid-19, with relatively low infection and death rates – 110k reported cases from a population of just over 50m. This is due, in part, to swift and effective actions taken at global the outbreak of the disease in 2020.
- The country remains vigilant in ensuring the disease doesn't spread with measures which include, but are not limited to:
 - Anyone arriving in Kenya must have a negative Covid-19 PCR test result. The test must have been taken within 96 hours prior to arrival in Kenya. Before flying, guests should visit
 - All Travellers are Required to fill the "Travellers Health Surveillance Form" via https://ears.health.go.ke/airline_registration/. After submitting the form, travellers will receive a QR code which must be presented to port health officials on arrival, for visitors to be allowed to proceed to arrival immigration.
 - Before flying, ensure guests check the requirements from their airline who may require specific additional measures.
 - As the global Covid-19 situation changes, so do requirements. Please contact Africa House for the latest information on requirements to travel. Also visit the Kenya Immigration website for any further information - <https://www.immigration.go.ke/>
 - It is illegal to appear in public without a mask
 - All hospitality and tourist destination staff must undergo regular Covid-19 testing
 - Temperature screening at entry points to public spaces
 - Provision of hand-washing stations or sanitizer dispensers in public spaces
 - All hospitality facilities must perform regular disinfection of surfaces & public spaces – including safari vehicles and rooms

- Social distancing measures are enforced in shared spaces
- Fortunately, while in Kenya and on safari you will spend the majority of time outdoors and in well ventilated spaces. The relatively low number of cases in the country and vigilant measures taken by the tourist sector mean there is very little chance of infection while on safari. That said, if guests were to be infected, the country has exceptional medical facilities and emergency evacuation can also be arranged for serious cases. Please see the section below for more information on health & medical.

MALARIA AND HEALTH & MEDICAL

Malaria

Malaria is endemic in certain parts of Kenya and all visitors should take malaria prophylactics according to prescription requirements.

Health & Medical

Visitors need to be in possession of a valid yellow fever and cholera vaccination certificate only if they are arriving from a country where these diseases are present. Visitors travelling on to Tanzania will need a valid yellow fever certificate so we recommend getting vaccinations and certificates before travel to the region. Requirements can change from time to time so please check with your country's health department for international travel.

There are excellent hospitals, dentists and opticians in Nairobi and Mombasa. Clients are advised to take out their own medical and travel insurance before coming to Kenya. The Flying Doctors Service can also be joined for a small fee whereby in the event of an accident or illness on safari, clients can be flown back to Nairobi for treatment. If this service is required it should be advised at the time of booking. AMREF, based in Nairobi, has an excellent flying doctors service and offers insurance for medical evacuation from most East African countries. See: <https://flydoc.org/>

Before travelling, visit your GP or doctor well before your departure date and explain your itinerary to get professional advice on the correct vaccines and medicines required.

SECURITY

Despite isolated incidents, Kenya is a very safe destination for visitors. Common sense should prevail however and precautions taken as with any holiday destination. Unless safety deposit boxes are available in the lodge or hotel, visitors should carry travel documents and other valuables with them. You should carry a photocopy of your passport for identification at all times. Only carry small amounts of cash and keep a close eye on belongings.

MONEY AND LOCAL CURRENCY

The local currency is Kenya Shillings (KES) or '*Shilingi*' in Kiswahili. \$1 USD is roughly equivalent to 100 KES (please consult xe.com for the exact exchange rate). Notes are issued in denominations of 50, 100, 200, 500 and 1,000 shillings. There are 1, 5, 10 and 20 shilling coins.

Hotels, restaurants and the majority of tourism industry players will accept American Dollars, Pound Sterling, EURO, card payments (see 'CREDIT CARDS' section below) or Kenya Shillings. Please note: Banks, foreign exchange centres and many tourist facilities will generally not accept USD notes produced before the year 2000 due to the number of plagiarized notes from this period (please do not bring 1996 notes in particular). If they do accept, it will be at a far less favorable exchange rate.

There is no limit to the amount of foreign currency visitors may import as long as it is exchanged through authorized dealers such as banks, hotels and bureau de changes. That said, amounts exceeding USD 10,000 must be declared at the airport on arrival. We do not advise guests to travel with such large amounts of money. Africa House can recommend the required amount of cash you will need, based on your itinerary.

Kenya is also the birthplace of M-PESA, a mobile payment platform which is also widely used in the country. To use the service, one must simply purchase a SIM card with Safaricom, the local Telco, and register for an M-PESA account using an ID or passport. Money can then be loaded onto phones at registered agents and used for payments. M-PESA is by no means mandatory to make payments but should you wish to experience the service which revolutionized the African financial industry, we can assist you.

CREDIT CARDS

Visa and Mastercard are widely accepted by hotels throughout Kenya. Some hotels accept American Express but it cannot be relied upon. ATMs are ubiquitous in cities but depending on your bank, may charge a withdrawal fee.

FOOD AND DRINK

As a rule, quotes are based on bed and breakfast in Nairobi, half board at the Coast and full board whilst on safari. Please refer to the hotel accommodation information section or contact Africa House for confirmation of the board you will receive at specific hotels.

The standard of cuisine at hotels and lodges we use is very high. From delicious gourmet meals to bush breakfasts, sundowners and picnic lunches, hotels and lodges offer a selection of European, African and Asian style meals. A wide range of drink selections are available and most are included at the hotels and lodges we use. However, premium brands and imported wines are at an extra cost at some hotels and lodges. For any specific and specialist drinks that guests would like to enjoy on safari, please contact Africa House so that we can ensure it is available at the hotels you will visit. Drinking water is generally provided by hotels and lodges and clients are advised to drink this or bottled water which is widely available. Tap water should not be consumed.

JOMO KENYATTA INTERNATIONAL AIRPORT

Jomo Kenyatta International Airport (JKIA) is located 15 km to the south-east of the Nairobi Central Business District. The airport is split into three units with domestic flights operating from Unit 3, and international flights running from Unit 1 and 2. The facilities at the airport arrivals hall include a bank, ATMs and bureau de change, a cafe, duty-free shops, tourist information and hotel reservations. There is an internet cafe in the departures area.

WHAT TO PACK

With long days spent outside in rugged surroundings, it's important to come prepared — but that doesn't mean packing everything but the kitchen sink. Indeed, most internal flights have strict, 15 kg weight limits for luggage and so you mustn't over pack. Thankfully, most safari camps have a laundry service so you'll be able to keep your clothes clean, no matter how long your African adventure is.

LUGGAGE

Luggage should be kept to a minimum — one main piece and an overnight bag is ideal. Soft-sided luggage or duffels are preferable (dimensions should not exceed 23 inches long x 11 inches high x 9 inches wide). As a preventative measure, it is recommended to bring a lock.

Apart from a large soft-sided bag or duffel bag, we strongly recommend a back pack or smaller day back for essentials during game drives, carry-on luggage and day trips.

CLOTHING

In terms of clothing; lightweight, neutral, breathable and stretchy pieces of clothing that you can layer are recommended. Mornings can be quite chilly while on game drives in open sided vehicles. By late morning / midday, the African sun is beating down so you need to be ready for those fluctuations and inevitabilities.

A few cotton or hybrid, short-sleeve shirts that are light and breathable, along with protective, long-sleeved sun shirts are musts. Again, temperatures fluctuate, so a down sweater or jacket will come in handy. Depending on your season of travel, you may encounter rain and so something waterproof is ideal.

Comfortable pants are an absolute must, especially for game drives and bush walks. Jeans and slacks made from hard fabrics aren't ideal due to their weight and lack of movement. Instead, choose convertible and windbreaker-type pants. Yoga and "dance" pants are added options for ladies.

A wide-brimmed hat with a chin strap helps protect you from the sun, which beats down from all angles as the day wears on. The strap keeps your hat from flying off your head when you're driving in an open-air vehicle. Without a strap, it gets tiring having to hold onto your hat for hours on end! You may also want to consider a buff or snood which can be used to cover the nose and mouth from dust, while driving in game parks.

Smart casual attire is appropriate for city and resort dining establishments and so packing a light jacket is wise. In the event you're travelling during winter months (mid-May through early September), do pack warm clothing. That includes a heavy sweater, light gloves, warmer slacks and a lined jacket. This will keep you comfortable on chilly mornings, when temperatures often dip into the low 40s Fahrenheit.

Most lodges and hotels have swimming pools so swimwear should be brought on all itineraries.

This one is for the ladies: those dirt roads are bumpy, so bring a sports bra. Take it from the pros - you'll be happy you did.

One more important tip: insects are attracted to dark blue and black, so in addition to wearing bug spray, you should avoid wearing those colors. Likewise, leave the bright colors and whites at home, along with heavy perfumes; they're believed to frighten animals, sending them into hiding. Additionally, camouflage is a no-no and is illegal in some game parks as it is reserved for the military.

In short, neutral, basic, comfortable clothing is the way to go. We encourage tan, brown, light pastels and neutral colors.

FOOTWEAR

Comfortable, closed-toe shoes that you don't mind getting dusty are important because safari vehicles ramble off-road and along dirt paths. We recommend sturdy walking shoes with hard soles for anyone interested in bush walks. Long thorns can pierce fabric and therefore converse trainers or similar shoes won't be appropriate. Heavy, clunky boots aren't necessary in safari vehicles and they'll eat away at your weight limit. Comfy, breathable socks

will help you stay cool throughout the day – we don't recommend black or dark blue socks as these attract mosquitoes. A pair of sandals or flip-flops will be appreciated during down time, however, they're not a practical option at night due to mosquitos and during morning game drives due to the cold.

LAUNDRY

Laundry services are available at most hotels, lodges and camps so there is no need to bring a huge amount of clothes. Note: some camps & lodges do not accept underwear for cultural reasons. Also, some laundry techniques may not be suitable for delicate and/or synthetic fabrics. Many camps & lodges supply soaps for hand-washing small personal items.

ACCESSORIES

- Camera equipment – Note: drones are NOT permitted in game parks and reserves
- Sun block and sunglasses
- If you wear eyeglasses or contact lenses, be sure to pack an extra pair
- Lightweight binoculars for wildlife viewing - a compact model with magnification of 8x32 is ideal
- A small, powerful flashlight
- Electrical adapter, voltage converter & charging cables for electronics - Kenya uses 240 V, Type G plugs
- A book or e-reader for down times
- An inflatable pillow to make bumpy road journeys more comfortable!

TOILETRIES

- A small pack of tissues or antiseptic wipes
- A small bottle of hand sanitizer
- Prescriptions and medications, preferably in their original bottles or packaging
- Many properties provide insect repellent in rooms/tents, however you may wish to bring your own preferred brand of insect repellent to protect against mosquitoes and tsetse flies
- Personal toiletries

TRAVEL TIPS & GENERAL INFORMATION

TRAVEL TIPS

- Before taking pictures of the local people, sensitivity is encouraged and permission should be obtained. Your guide will be able to assist and advise. Taking photographs at airports, at shopping malls, near military installations, and of policemen etc. is prohibited.
- Plastic bags are banned in Kenya and individuals found with bags can be fined. Please do not bring single use plastic bags into the country. At the airport an amnesty is offered to hand over any plastic bags you may have. Duty Free carrier bags will be confiscated at the airport on arrival.
- Women travelling to the coastal region should be mindful that the population are predominantly Muslim and dress codes are more conservative than in other parts of the country. This doesn't apply in hotels.
- Smoking in all public places (except designated areas) is prohibited throughout Kenya.
- Security checks are carried out at shopping malls, recreational centers and hotels.
- A customs bond may be requested from visitors bringing in excessive video, film equipment, radios and musical instruments.
- Firearms are forbidden except under special circumstances.
- Consult **International Travel Advisories** for latest advice.

GETTING AROUND

Game drives

Game drives will be conducted in 4x4 vehicles, similar to the ones below. Different camps and lodges all have different vehicles with varying levels of accessories but the essentials of the vehicle will remain the same; 4x4, 6-8 seats for guests and open sides or pop-up roof for game viewing.



Inter-country travel

Depending on your itinerary, travel between game parks and reserves will be done by road or by air;

By road

Road transfers will be done either in 4x4 vehicles, similar to those used for game drives, or in 8-seater minibuses. Kenya is a large country with distances between some parks and reserves are large. Kenya doesn't have a network of motorways but instead relies on dual and single carriage highways. This means relatively short distances can take a long time by road but this does allow travelers to take in the sights and sounds of the areas between destinations.

By air

Guests can choose from scheduled flights or privately chartered, light-wing aircraft or choppers. Africa House can arrange all flights and logistics for both scheduled and charter flights.

There are many scheduled flights to game parks and reserves in Kenya. Depending on itineraries and destinations, scheduled flights will be done through regional carriers in either Cessna Caravans, DHC-6-300s, Dash 7s, Dash 8s, Fokker or equivalent aircraft. These aircraft vary in size with the smallest able to carry 11 passengers and the largest able to carry 50.

Alternatively, guests can choose to charter private aircraft which provide complete flexibility with departure times and allows direct travel to a lodge or camp's private air strip, if applicable.

Typical scheduled & chartered aircraft options



TIPPING

Our general recommendation is to tip in accordance with the level and quality of service provided. The following guidelines are generally accepted practice (per person): Professional Safari Guide(s) \$20 per day; Camp staff - US \$10 per day, as a pooled tip to be shared among the housekeepers, waiters, bartender, etc; For porters and waiters at hotels and for taxi drivers in cities, the customary tip is approximately 10%. (Tipping in US\$ 1.00 bills for porters and waiters is greatly appreciated). The traditional gratuity to safari guides or camp staff is not included in the price of your tour but is completely discretionary.

RESPONSIBLE TOURISM

At Africa House, we're proud to embrace the values of responsible tourism. As a small-scale, locally-based travel operator, we love and care about East Africa and do what we can to ensure that we have a positive impact, both socially and environmentally, in the region. Our relationships with our guides and with the owners of the accommodations we choose for our guests are mutually respectful arrangements that go beyond profit-driven business. And we only use camps and lodges which we know provide excellent working conditions for their staff.

We are also keen to take guests to lodges and attractions with high environmental credentials. These include stunning low-impact eco-lodges and camps and conservancies which are working towards wildlife conservation and the sustainability of East Africa's habitats and ecosystems. These green camps and lodges succeed in connecting you with the African wilderness while at the same time protecting the very landscapes and wildlife you've come to enjoy.

CAUSES AND INITIATIVES

As well as pursuing positive change through the way we operate day-to-day, we also support a number of specific causes and initiatives:

The Africa House Trust

The Africa House Trust is the charitable wing of Africa House, established to allow us to reinvest in the communities we visit. Through our flagship project, 'Spreading the Word', we are investing in books and libraries to promote better literacy in Kenyan schools. Our initiative is based on the principle that investing in books and libraries is at the heart of educational reform, and that creating literate environments and societies is essential for ensuring sustainable development. The AHT will initially set up and resource libraries at two schools; one in Lewa Downs in northern Kenya, and another in an urban settlement within Nairobi. In addition to providing much needed resources to approximately 800 children aged 6 to 13 years, the 'Spreading the Word' libraries will act as creative hubs for learning.



Supporting Conservation Initiatives

We also support a number of East African projects that promote the protection of wildlife and habitats in the region. Simply taking guests to visit these initiatives is itself an effective way to contribute to their work. It generates valuable funding for the causes while providing guests with a fascinating and enlightening wildlife experience. These projects include; the Ol Malo Trust, which supports social wellbeing and sustainability in a private conservancy in Kenya and gorilla treks in Rwanda and Uganda, which are vital in supporting the protection of these endangered creatures. We also take guests to visit the David Sheldrick Wildlife Trust, which cares for orphaned elephants. We even sponsor one ourselves – a lively young elephant called Chemi Chemi, whose progress we often report on in our blog.



Planting Trees

For the past few years, we have committed to planting ten trees for every guest who comes on safari with Africa House. This allows us to offset the carbon emissions resulting from our guests' air travel. It also helps us to create a 'lung' to promote good air quality and maintain a habitat-rich green space around our base just outside Nakuru in Kenya.



TESTIMONIALS

“

“We had a marvellous time and loved the animals and camping in the Serengeti. Our guides could not have been better and we loved the food and attentive staff. Regarding the preparation and planning of the trip, we were well prepared and found all information helpful.”

Steve & Mary Watson

“We had two specific requests – the first was to see the mountain gorillas in Rwanda and the second was to see both black and white rhino in the wild. The gorillas were wonderful. You would never think that you could be so close to these magnificent creatures. At Lewa Safari camp and were treated to a mass of wildlife including many rhino, both black and white – such fantastic beasts. We’ve got to thank Karen and David for organising our trip of a lifetime. Will we be back? You bet!”

Andre

“After such an incredible trip I just have to let you know that nothing we have ever done compares to our time with you in Africa. You taught us so much and took exceptional care of us. How we loved every minute. We still wake up every day talking about the trip.”

Jane McMullin

“Being our very first trip to Africa, we were not quite sure what to expect but our hopes were high as this was a very special family trip. I am elated to report that the entire trip exceeded greatly our wildest expectations. What we saw with David in terms of the magnitude and variety of different animals was unbelievable. Our entire family wants to thank you for a beautiful and wonderful experience in Africa. It provided us with a two week experience that will live in our memories for years to come.”

The Coggin family

“David was superb – he planned a trip with great variety and was sensitive to age spread. He was particularly helpful with Marina, our granddaughter. He is a real professional.”

The Herbst family

“It is good to be home, but the more we look at our photos the more we wish we were back in Kenya. We were overwhelmed by the beauty of both the people and the country itself and would love to return to revisit some areas and find some new ones. If we do, we know exactly who should design the trip for us.”

Sue & Bill Roth

”

TERMS AND CONDITIONS

PAYMENT POLICY

We require a deposit of 30% of the final quotation to confirm the safari. This must be received before any bookings can be confirmed. The balance is payable 60 days before planned starting date.

CANCELLATION POLICY

1. Regular Cancellation Policy

This notice below should be read in conjunction with the individual cancellation policies from the relevant Camps and Lodges included in your itinerary.

If notice of cancellation is received in writing at least **120 days prior to safari starting date**, the full deposit is refunded, less non-refundable gorilla permits, non-refundable camp/lodge deposits and bank charges. If such notice is received between 60 and 120 days prior to safari starting date, the full deposit is forfeited. If such notice is received between 30 and 60 days prior to the safari starting dates, 50% of the full safari cost is forfeited. The full safari cost is forfeited if such notice is received less than 30 days prior to the safari starting date. In the event of a reduction in numbers on a safari, the safari will be re costed at the then applicable rates.

2. Covid-19 specific cancellation policy

We are working in conjunction with properties and their varying Covid-19 cancellation policies. As policies differ from one property to another, there isn't a blanket policy, and each request will need to be assessed based on the properties involved. Any cancellations will **incur a 10% admin fee**. Any deposits on cancellations made outside of the cancellation period (**120 days prior to safari starting date**), can be used towards future bookings. However, any 3rd party cancellation fees and non-refundable gorilla permits, non-refundable camp/lodge deposits and bank charges will need to be considered on a case-by-case basis.

CONTACT US

Karen Sugden - Director

Tel: +254 (0)722 411 206

Email: Karen@africahousesafaris.com

David Sugden - Director

Tel: +254 (0)722 512 588

Email: David@africahousesafaris.com

Postal Address

Africa House Ltd P.O. Box 1751, Nairobi, 00502

Website

africahousesafaris.com

